

PUEBLO'S Comprehensive Plan

Effective October 22, 2007

Future Land Use

-  Arterial Commercial Mixed Use
-  Country Residential
-  Country Village
-  Employment Center - Industry
-  Employment Center - Light Industry Mixed
-  Employment Center - Office Park
-  High Density Residential
-  Institutional Mixed Use
-  Large Parks, Open Space, & River Corridors
-  Production Agriculture
-  Rural Ranch
-  Special Development Area
-  Suburban Residential
-  Urban Mixed Use
-  Urban Residential

Created by City of Pueblo, GIS
July 1, 2008

This map is only a representation of the official
Comprehensive Plan Map. For more information
contact the office of Community Planning and Development.

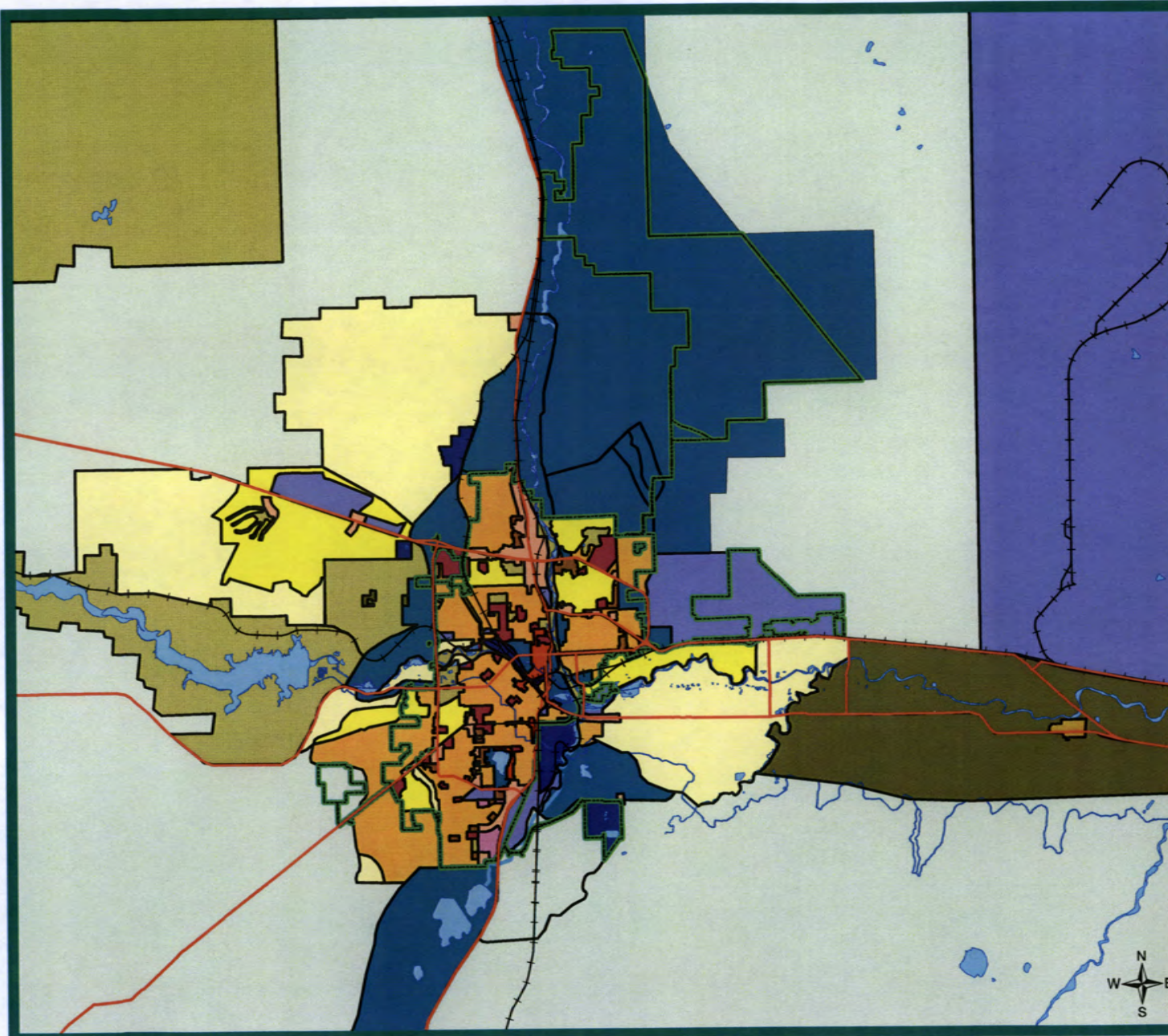
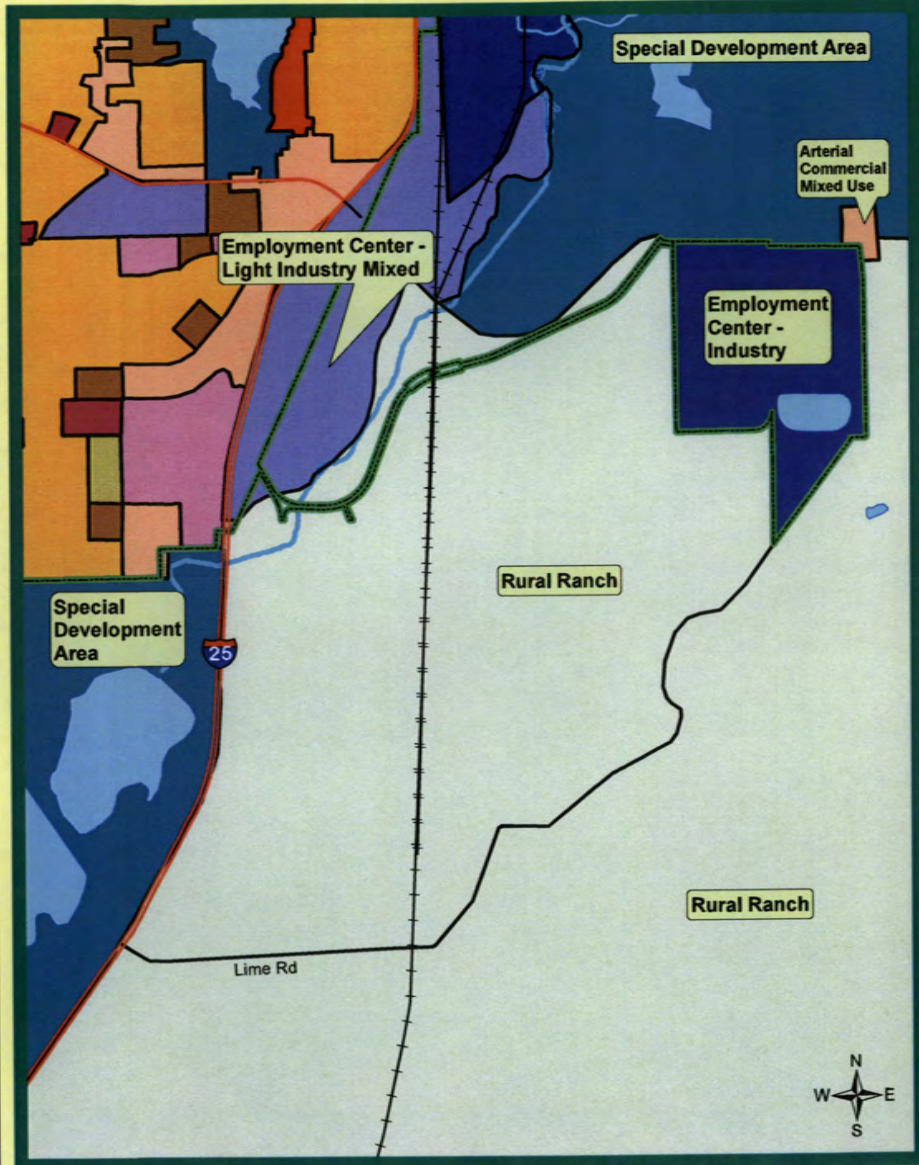


Exhibit B

Existing Future Land Use



Proposed Future Land Use

