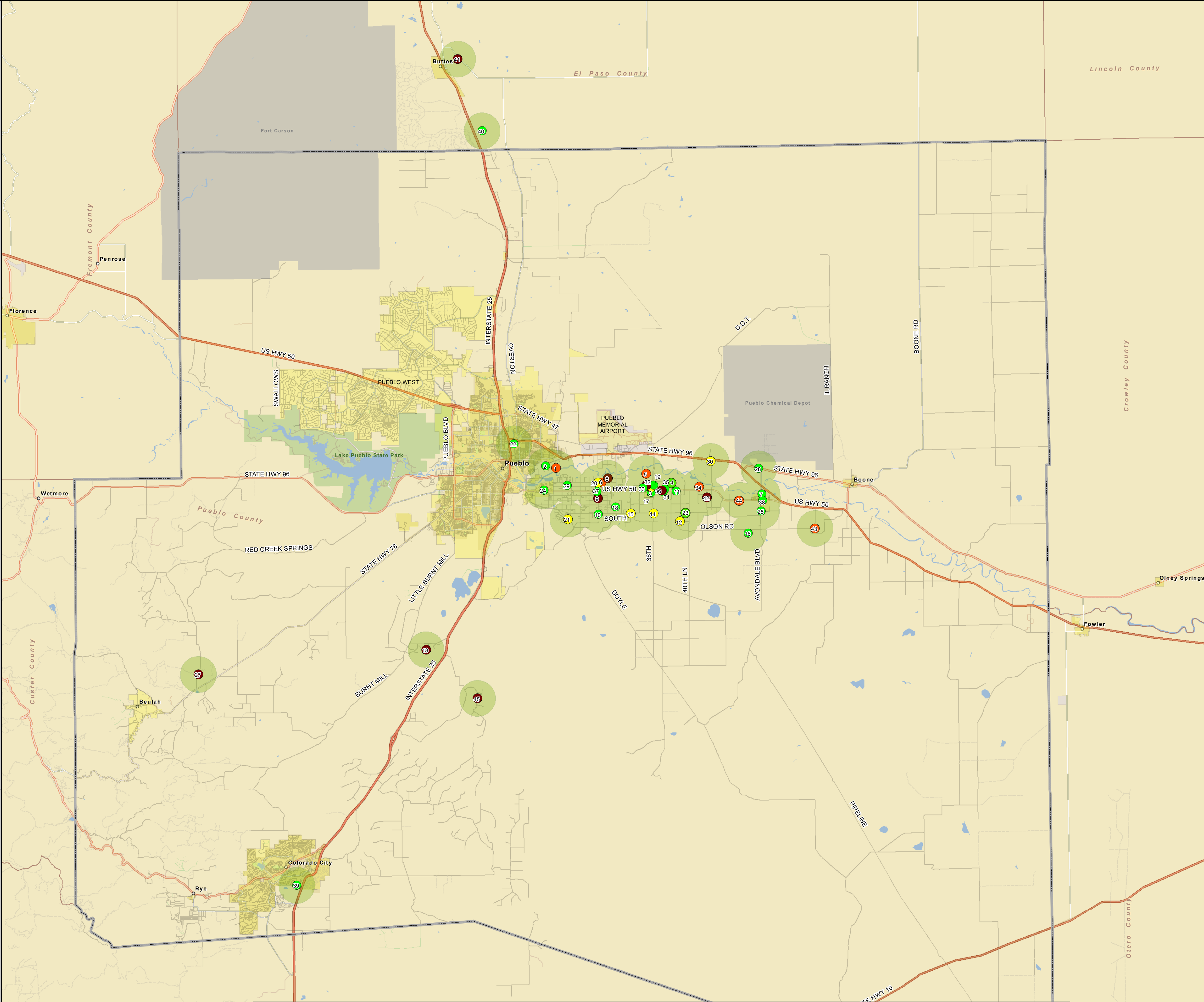


Where Do We Grow Food in Pueblo County?



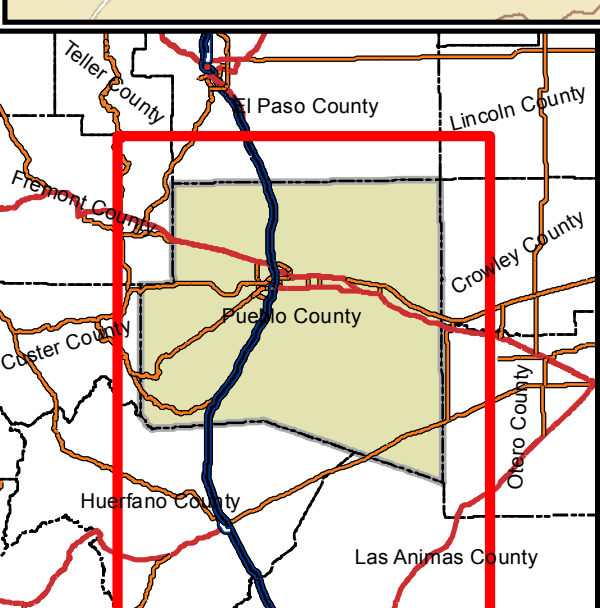
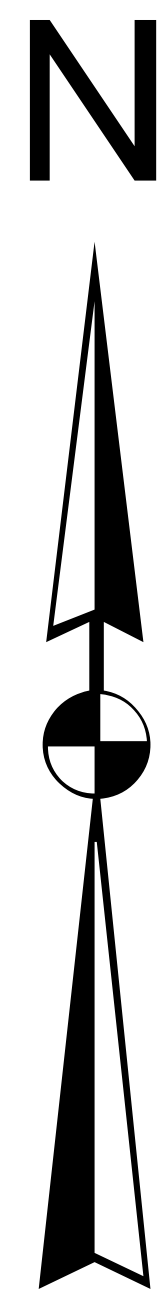
PRODUCERS OF

- FRUIT & VEGETABLE PRODUCERS
- VEGETABLE AND MEAT PRODUCERS
- MEAT PRODUCERS
- GRAIN & FIELD CROP PRODUCERS

PRODUCERS

Company Name ID #

- | | | |
|--|--|--|
| ● Blue Raven Farm, 2 | ● Spankees Produce, 29 | ● Dennis Heater Farms, 9 |
| ● Carl Musso Produce, 3 | ● Thomas Produce Co, 31 | ● EcoGlatt, 13 |
| ● Hydro-Pure Growers, 4 | ● Vic Mauro Produce, 33 | ● Running M Ranch, 27 |
| ● Crites Produce, 7 | ● DiTomaso Farms, 35 | ● Torpedo Farms Meat Co Inc, 32 |
| ● Di Santi Farms, 10 | ● Milberger Farms, 37 | ● Barker Family Farm, 36 |
| ● Dionisio Farms, 11 | ● Rovegno's Produce, 38 | ● Frost Farm, 41 |
| ● Hobbs Family Farm, 16 | ● CSS Potato Farms, 39 | ● G & A Farms & Livestock Inc, 42 |
| ● Martellaro Farms, 18 | ● Dragonfly Farm, 40 | ● Sunflower Valley, 45 |
| ● Mauro Farms Bakery, 19 | ● A Wrens Nest Farm, 1 | ● Don Pritekel Farms, 12 |
| ● MIRA-Sol Chile Corp, 22 | ● Centa Farms & Livestock Inc, 5 | ● Clay Fitzsimmons, 14 |
| ● Pantaleo Farms, 23 | ● Country Roots Farm, 6 | ● Genova Brothers Farms & Fdlt, 15 |
| ● Peppers Plus, 24 | ● Vigil Land and Cattle, 34 | ● Lopresti Farms Inc, 17 |
| ● Potestio Farms, 25 | ● Larga Vista Ranch, 43 | ● Mike Clementi Farms, 20 |
| ● Rusler Produce, 28 | ● Pisciotta Land & Cattle, 44 | ● Miller & Miller Farms LTD, 21 |
| | ● Critterhaven, 8 | ● Stonewall Springs, 30 |



1 inch = 15,000 feet

1:180,000



- Pueblo County Boundary
- 1 Mile Buffer Around Producers
- Community Boundaries

Prepared by the Pueblo County GIS Center
For: Pueblo City County Health Department
Unauthorized reproduction or duplication of this document is strictly prohibited
without written consent by the Pueblo County GIS Center.
The Pueblo County GIS Center makes no claims as to the accuracy of the
information portrayed in this document.
For further information, please contact the Pueblo County GIS Center,
215 W 10th St, Pueblo CO 81003 719.583.6240 (v) 719.583.6249 (f)

Base Data Sources: Pueblo County GIS, CDOT, USDA, and US Census.
File Name: Map1_WhereWeGrowFoodProducers.mxd
Path: S:\gis\shared\projects\economic_gardening\health\Depth
Date of Preparation: Jul 01, 2013
Prepared by: Shirley Schwinghammer

