



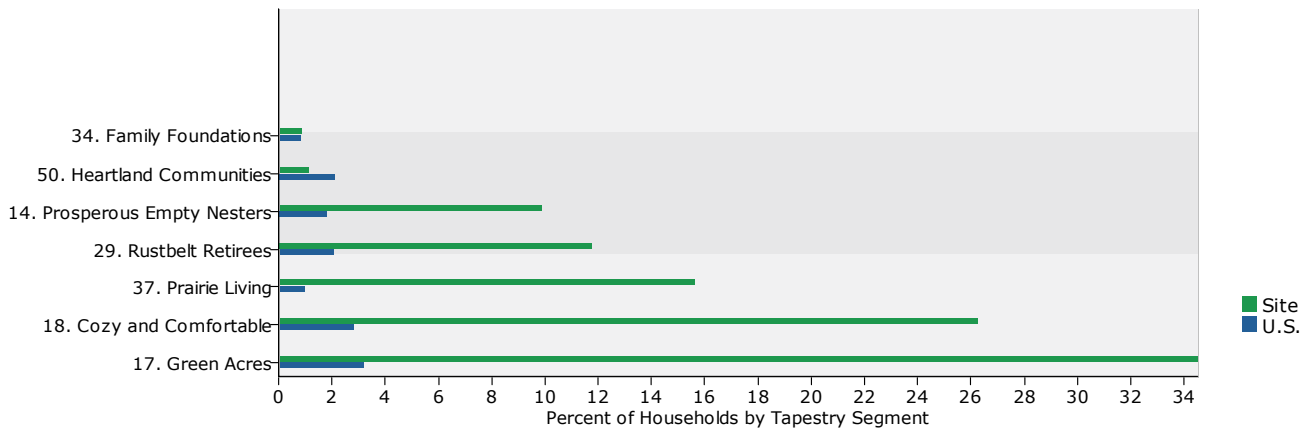
Tapestry Segmentation Area Profile

St Charles Mesa

Top Twenty Tapestry Segments

Rank	Tapestry Segment	Households		U.S. Households		Index
		Percent	Cumulative Percent	Percent	Cumulative Percent	
1	17. Green Acres	34.5%	34.5%	3.2%	3.2%	1,072
2	18. Cozy and Comfortable	26.2%	60.7%	2.8%	6.0%	931
3	37. Prairie Living	15.6%	76.4%	1.0%	7.0%	1,571
4	29. Rustbelt Retirees	11.8%	88.1%	2.1%	9.1%	570
5	14. Prosperous Empty Nesters	9.9%	98.0%	1.8%	10.9%	539
Subtotal		98.0%		10.9%		
6	50. Heartland Communities	1.1%	99.1%	2.1%	13.0%	53
7	34. Family Foundations	0.9%	100.0%	0.8%	13.9%	105
Subtotal		2.0%		3.0%		
Total		100.0%		13.9%		720

Top Ten Tapestry Segments Site vs. U.S.



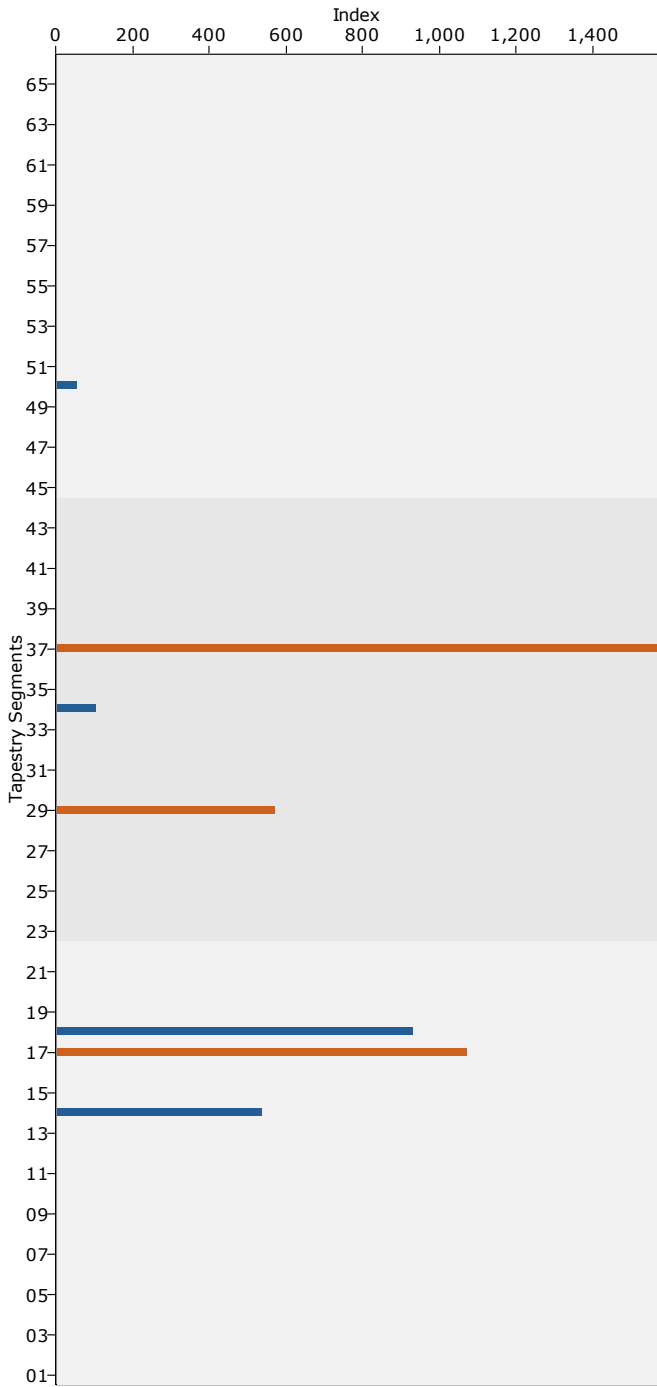
Data Note: This report identifies neighborhood segments in the area, and describes the socioeconomic quality of the immediate neighborhood. The index is a comparison of the percent of households or population in the area, by Tapestry segment, to the percent of households or population in the United States, by segment. An index of 100 is the US average.



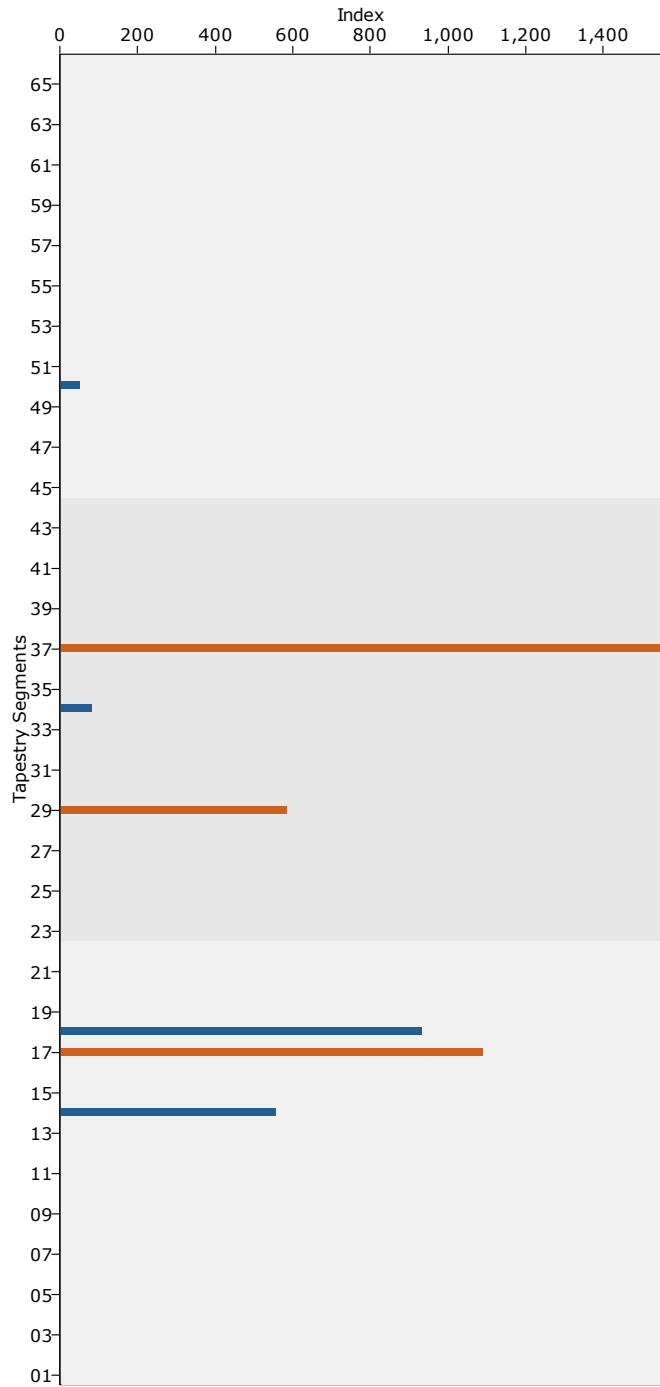
Tapestry Segmentation Area Profile

St Charles Mesa

Tapestry Indexes by Households



Tapestry Indexes by Population



Data Note: This report identifies neighborhood segments in the area, and describes the socioeconomic quality of the immediate neighborhood. The index is a comparison of the percent of households or population in the area, by Tapestry segment, to the percent of households or population in the United States, by segment. An index of 100 is the US average.



Tapestry Segmentation Area Profile

St Charles Mesa

Tapestry LifeMode Groups	2010 Households			2010 Population		
	Number	Percent	Index	Number	Percent	Index
Total:	3,424	100.0%		9,029	100.0%	
L1. High Society	0	0.0%	0	0	0.0%	0
01 Top Rung	0	0.0%	0	0	0.0%	0
02 Suburban Splendor	0	0.0%	0	0	0.0%	0
03 Connoisseurs	0	0.0%	0	0	0.0%	0
04 Boomburbs	0	0.0%	0	0	0.0%	0
05 Wealthy Seaboard Suburbs	0	0.0%	0	0	0.0%	0
06 Sophisticated Squires	0	0.0%	0	0	0.0%	0
07 Exurbanites	0	0.0%	0	0	0.0%	0
L2. Upscale Avenues	2,080	60.7%	438	5,655	62.6%	455
09 Urban Chic	0	0.0%	0	0	0.0%	0
10 Pleasant-Ville	0	0.0%	0	0	0.0%	0
11 Pacific Heights	0	0.0%	0	0	0.0%	0
13 In Style	0	0.0%	0	0	0.0%	0
16 Enterprising Professionals	0	0.0%	0	0	0.0%	0
17 Green Acres	1,182	34.5%	1,072	3,301	36.6%	1,091
18 Cozy and Comfortable	898	26.2%	931	2,354	26.1%	933
L3. Metropolis	0	0.0%	0	0	0.0%	0
20 City Lights	0	0.0%	0	0	0.0%	0
22 Metropolitans	0	0.0%	0	0	0.0%	0
45 City Strivers	0	0.0%	0	0	0.0%	0
51 Metro City Edge	0	0.0%	0	0	0.0%	0
54 Urban Rows	0	0.0%	0	0	0.0%	0
62 Modest Income Homes	0	0.0%	0	0	0.0%	0
L4. Solo Acts	0	0.0%	0	0	0.0%	0
08 Laptops and Lattes	0	0.0%	0	0	0.0%	0
23 Trendsetters	0	0.0%	0	0	0.0%	0
27 Metro Renters	0	0.0%	0	0	0.0%	0
36 Old and Newcomers	0	0.0%	0	0	0.0%	0
39 Young and Restless	0	0.0%	0	0	0.0%	0
L5. Senior Styles	779	22.8%	185	1,909	21.1%	205
14 Prosperous Empty Nesters	338	9.9%	539	841	9.3%	556
15 Silver and Gold	0	0.0%	0	0	0.0%	0
29 Rustbelt Retirees	403	11.8%	570	983	10.9%	585
30 Retirement Communities	0	0.0%	0	0	0.0%	0
43 The Elders	0	0.0%	0	0	0.0%	0
49 Senior Sun Seekers	0	0.0%	0	0	0.0%	0
50 Heartland Communities	38	1.1%	53	85	0.9%	50
57 Simple Living	0	0.0%	0	0	0.0%	0
65 Social Security Set	0	0.0%	0	0	0.0%	0
L6. Scholars & Patriots	0	0.0%	0	0	0.0%	0
40 Military Proximity	0	0.0%	0	0	0.0%	0
55 College Towns	0	0.0%	0	0	0.0%	0
63 Dorms to Diplomas	0	0.0%	0	0	0.0%	0

Data Note: This report identifies neighborhood segments in the area, and describes the socioeconomic quality of the immediate neighborhood. The index is a comparison of the percent of households or population in the area, by Tapestry segment, to the percent of households or population in the United States, by segment. An index of 100 is the US average.



Tapestry Segmentation Area Profile

St Charles Mesa

Tapestry LifeMode Groups	2010 Households			2010 Population		
	Number	Percent	Index	Number	Percent	Index
Total:	3,424	100.0%		9,029	100.0%	
L7. High Hopes	0	0.0%	0	0	0.0%	0
28 Aspiring Young Families	0	0.0%	0	0	0.0%	0
48 Great Expectations	0	0.0%	0	0	0.0%	0
L8. Global Roots	0	0.0%	0	0	0.0%	0
35 International Marketplace	0	0.0%	0	0	0.0%	0
38 Industrious Urban Fringe	0	0.0%	0	0	0.0%	0
44 Urban Melting Pot	0	0.0%	0	0	0.0%	0
47 Las Casas	0	0.0%	0	0	0.0%	0
52 Inner City Tenants	0	0.0%	0	0	0.0%	0
58 NeWest Residents	0	0.0%	0	0	0.0%	0
60 City Dimensions	0	0.0%	0	0	0.0%	0
61 High Rise Renters	0	0.0%	0	0	0.0%	0
L9. Family Portrait	0	0.0%	0	0	0.0%	0
12 Up and Coming Families	0	0.0%	0	0	0.0%	0
19 Milk and Cookies	0	0.0%	0	0	0.0%	0
21 Urban Villages	0	0.0%	0	0	0.0%	0
59 Southwestern Families	0	0.0%	0	0	0.0%	0
64 City Commons	0	0.0%	0	0	0.0%	0
L10. Traditional Living	30	0.9%	10	68	0.8%	9
24 Main Street, USA	0	0.0%	0	0	0.0%	0
32 Rustbelt Traditions	0	0.0%	0	0	0.0%	0
33 Midlife Junction	0	0.0%	0	0	0.0%	0
34 Family Foundations	30	0.9%	105	68	0.8%	84
L11. Factories & Farms	535	15.6%	167	1,397	15.5%	168
25 Salt of the Earth	0	0.0%	0	0	0.0%	0
37 Prairie Living	535	15.6%	1,571	1,397	15.5%	1,554
42 Southern Satellites	0	0.0%	0	0	0.0%	0
53 Home Town	0	0.0%	0	0	0.0%	0
56 Rural Bypasses	0	0.0%	0	0	0.0%	0
L12. American Quilt	0	0.0%	0	0	0.0%	0
26 Midland Crowd	0	0.0%	0	0	0.0%	0
31 Rural Resort Dwellers	0	0.0%	0	0	0.0%	0
41 Crossroads	0	0.0%	0	0	0.0%	0
46 Rooted Rural	0	0.0%	0	0	0.0%	0
66 Unclassified	0	0.0%	0	0	0.0%	0

Data Note: This report identifies neighborhood segments in the area, and describes the socioeconomic quality of the immediate neighborhood. The index is a comparison of the percent of households or population in the area, by Tapestry segment, to the percent of households or population in the United States, by segment. An index of 100 is the US average.



Tapestry Segmentation Area Profile

St Charles Mesa

Tapestry Urbanization	2010 Households			2010 Population		
	Number	Percent	Index	Number	Percent	Index
Total:	3,424	100.0%		9,029	100.0%	
U1. Principal Urban Centers I	0	0.0%	0	0	0.0%	0
08 Laptops and Lattes	0	0.0%	0	0	0.0%	0
11 Pacific Heights	0	0.0%	0	0	0.0%	0
20 City Lights	0	0.0%	0	0	0.0%	0
21 Urban Villages	0	0.0%	0	0	0.0%	0
23 Trendsetters	0	0.0%	0	0	0.0%	0
27 Metro Renters	0	0.0%	0	0	0.0%	0
35 International Marketplace	0	0.0%	0	0	0.0%	0
44 Urban Melting Pot	0	0.0%	0	0	0.0%	0
U2. Principal Urban Centers	0	0.0%	0	0	0.0%	0
45 City Strivers	0	0.0%	0	0	0.0%	0
47 Las Casas	0	0.0%	0	0	0.0%	0
54 Urban Rows	0	0.0%	0	0	0.0%	0
58 NeWest Residents	0	0.0%	0	0	0.0%	0
61 High Rise Renters	0	0.0%	0	0	0.0%	0
64 City Commons	0	0.0%	0	0	0.0%	0
65 Social Security Set	0	0.0%	0	0	0.0%	0
U3. Metro Cities I	0	0.0%	0	0	0.0%	0
01 Top Rung	0	0.0%	0	0	0.0%	0
03 Connoisseurs	0	0.0%	0	0	0.0%	0
05 Wealthy Seaboard Suburbs	0	0.0%	0	0	0.0%	0
09 Urban Chic	0	0.0%	0	0	0.0%	0
10 Pleasant-Ville	0	0.0%	0	0	0.0%	0
16 Enterprising Professionals	0	0.0%	0	0	0.0%	0
19 Milk and Cookies	0	0.0%	0	0	0.0%	0
22 Metropolitans	0	0.0%	0	0	0.0%	0
U4. Metro Cities II	30	0.9%	8	68	0.8%	8
28 Aspiring Young Families	0	0.0%	0	0	0.0%	0
30 Retirement Communities	0	0.0%	0	0	0.0%	0
34 Family Foundations	30	0.9%	105	68	0.8%	84
36 Old and Newcomers	0	0.0%	0	0	0.0%	0
39 Young and Restless	0	0.0%	0	0	0.0%	0
52 Inner City Tenants	0	0.0%	0	0	0.0%	0
60 City Dimensions	0	0.0%	0	0	0.0%	0
63 Dorms to Diplomas	0	0.0%	0	0	0.0%	0
U5. Urban Outskirts I	0	0.0%	0	0	0.0%	0
04 Boomburbs	0	0.0%	0	0	0.0%	0
24 Main Street, USA	0	0.0%	0	0	0.0%	0
32 Rustbelt Traditions	0	0.0%	0	0	0.0%	0
38 Industrious Urban Fringe	0	0.0%	0	0	0.0%	0
48 Great Expectations	0	0.0%	0	0	0.0%	0

Data Note: This report identifies neighborhood segments in the area, and describes the socioeconomic quality of the immediate neighborhood. The index is a comparison of the percent of households or population in the area, by Tapestry segment, to the percent of households or population in the United States, by segment. An index of 100 is the US average.



Tapestry Segmentation Area Profile

St Charles Mesa

Tapestry Urbanization	2010 Households			2010 Population		
	Number	Percent	Index	Number	Percent	Index
Total:	3,424	100.0%		9,029	100.0%	
U6. Urban Outskirts II	0	0.0%	0	0	0.0%	0
51 Metro City Edge	0	0.0%	0	0	0.0%	0
55 College Towns	0	0.0%	0	0	0.0%	0
57 Simple Living	0	0.0%	0	0	0.0%	0
59 Southwestern Families	0	0.0%	0	0	0.0%	0
62 Modest Income Homes	0	0.0%	0	0	0.0%	0
U7. Suburban Periphery I	338	9.9%	63	841	9.3%	57
02 Suburban Splendor	0	0.0%	0	0	0.0%	0
06 Sophisticated Squires	0	0.0%	0	0	0.0%	0
07 Exurbanites	0	0.0%	0	0	0.0%	0
12 Up and Coming Families	0	0.0%	0	0	0.0%	0
13 In Style	0	0.0%	0	0	0.0%	0
14 Prosperous Empty Nesters	338	9.9%	539	841	9.3%	556
15 Silver and Gold	0	0.0%	0	0	0.0%	0
U8. Suburban Periphery II	1,301	38.0%	395	3,337	37.0%	411
18 Cozy and Comfortable	898	26.2%	931	2,354	26.1%	933
29 Rustbelt Retirees	403	11.8%	570	983	10.9%	585
33 Midlife Junction	0	0.0%	0	0	0.0%	0
40 Military Proximity	0	0.0%	0	0	0.0%	0
43 The Elders	0	0.0%	0	0	0.0%	0
53 Home Town	0	0.0%	0	0	0.0%	0
U9. Small Towns	38	1.1%	23	85	0.9%	21
41 Crossroads	0	0.0%	0	0	0.0%	0
49 Senior Sun Seekers	0	0.0%	0	0	0.0%	0
50 Heartland Communities	38	1.1%	53	85	0.9%	50
U10. Rural I	1,182	34.5%	303	3,301	36.6%	320
17 Green Acres	1,182	34.5%	1,072	3,301	36.6%	1,091
25 Salt of the Earth	0	0.0%	0	0	0.0%	0
26 Midland Crowd	0	0.0%	0	0	0.0%	0
31 Rural Resort Dwellers	0	0.0%	0	0	0.0%	0
U11. Rural II	535	15.6%	206	1,397	15.5%	207
37 Prairie Living	535	15.6%	1,571	1,397	15.5%	1,554
42 Southern Satellites	0	0.0%	0	0	0.0%	0
46 Rooted Rural	0	0.0%	0	0	0.0%	0
56 Rural Bypasses	0	0.0%	0	0	0.0%	0
66 Unclassified	0	0.0%	0	0	0.0%	0

Data Note: This report identifies neighborhood segments in the area, and describes the socioeconomic quality of the immediate neighborhood. The index is a comparison of the percent of households or population in the area, by Tapestry segment, to the percent of households or population in the United States, by segment. An index of 100 is the US average.