



Library Site

US 50 Business

St. Charles Mesa Community Center

Recreation Center: 16,000 square feet @ \$160 per square foot - \$2,500,000

Swimming Pool: 50m length with 25m cross laps - \$1,000,000



4th Street Bridge

DM Judicial

South Colorado Power Company Reservoir

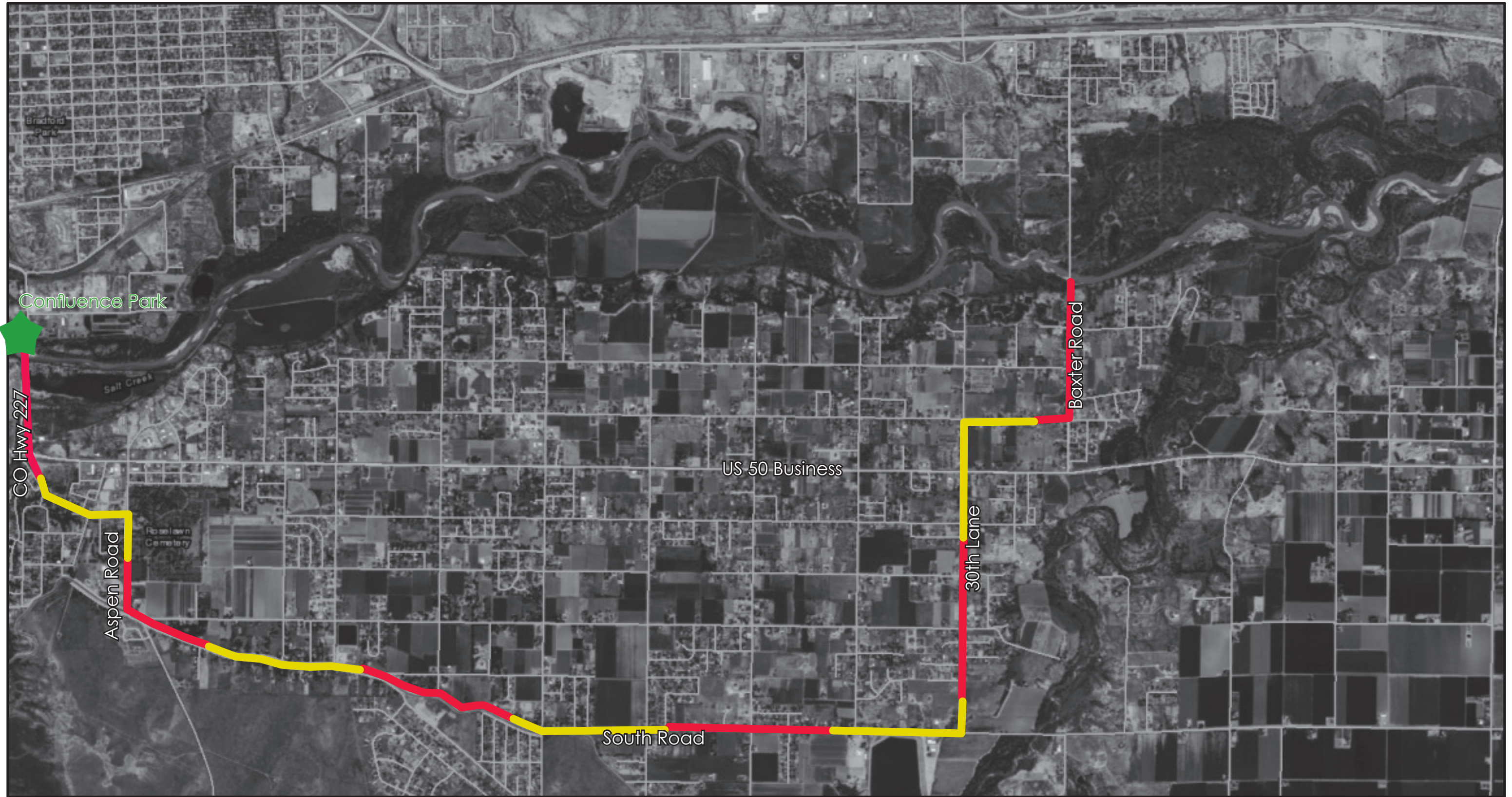
Downtown Youth Sports Complex



Downtown Youth Sports Complex

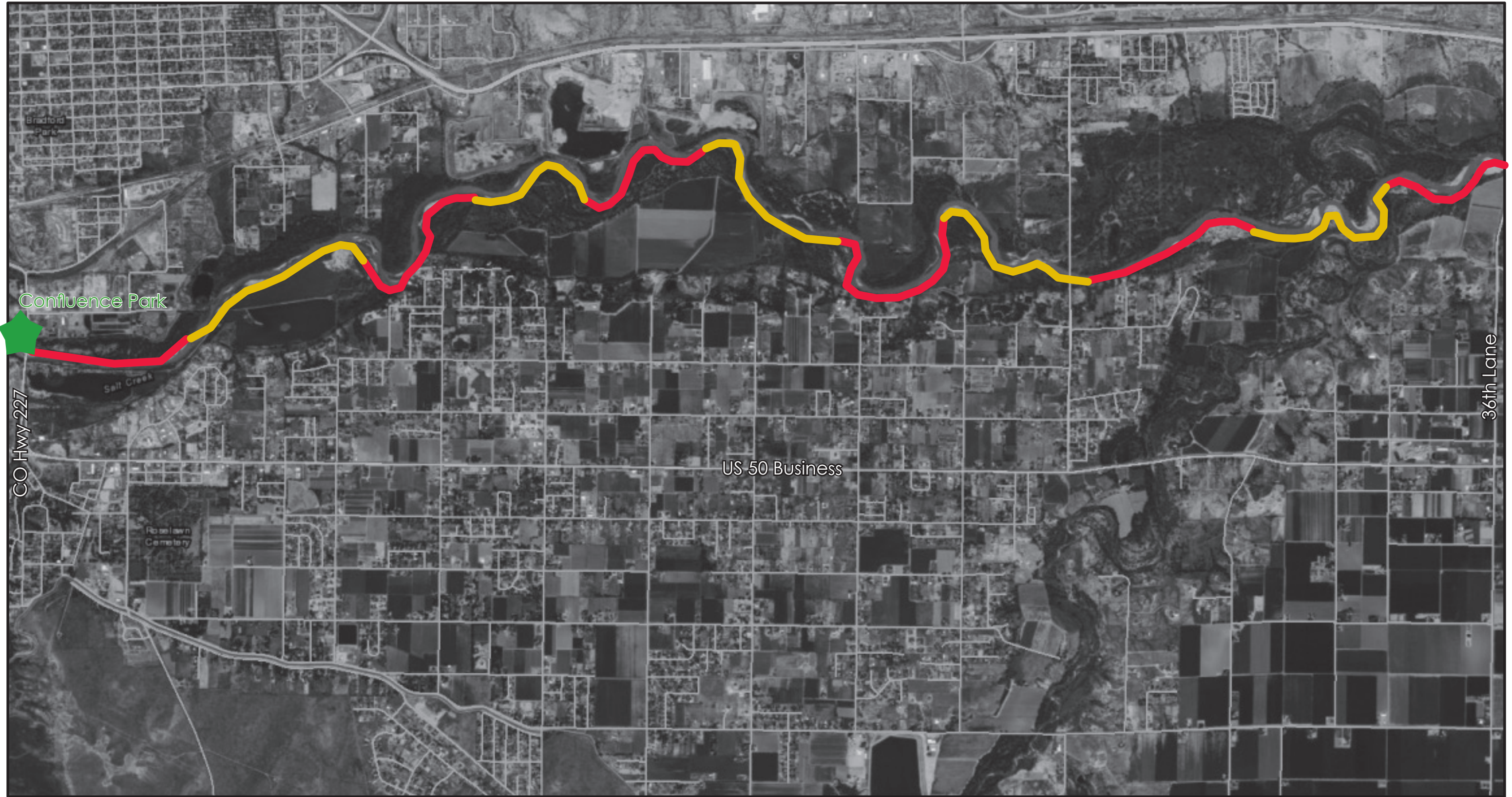


Southwest Chief to Pueblo



Arkansas River Trail, Path 1: Confulence Park to Baxter Road

Approximate distance per mile indicated by alternating red and yellow lines



Arkansas River Trail, Path 2: Confulence Park to 36th Lane

Approximate distance per mile indicated by alternating red and yellow lines