

Appendix B: Demographic Forecast Methodology

B.1 Introduction

Travel demand forecasting is an integral part of transportation planning. This appendix is devoted to illustrating the patterns of growth that are to be expected over the 2010-2045 planning horizon. This is illustrated through tables, maps and narrative text describing change, both in demographic terms, and relative to the transportation network system. This appendix has two major sections:

1. Development of the 2010 TAZ and demographic data using the U.S. Census 2010 data – In 2015, with the 2010 U.S. Census data in hand, PACOG staff prepared a detailed TAZ and demographic database for use in the PACOG models. The files developed for this effort are the foundation database.
2. The 2020 TAZ and demographic data used the American Community Survey (ACS) updates, a revised TAZ system and information from the state demography office¹ to populate 2020 and 2045 socioeconomic data. It is anticipated that the next LRP cycle will incorporate the 2020 U.S. Census.

Forecasts of socioeconomic variables are required as input data for the Pueblo travel demand model. These include estimates of total population, population in households, institutional (group quarters) population, households, income distribution and median household income, and employment by economic sector. These are required for the base year in which the model is to be run and the forecast year. The Pueblo Metropolitan Planning Organization (MPO) has boundaries that are coterminous with those of Pueblo County. Within this area, the 2010 model had 206 transportation analysis zones (TAZs) while the 2020 model expanded to a 235 zone system

This appendix steps the reader through the comprehensive foundation 2010 data development work as well as the zone expansion and data steps required for the establishment of the newly revised 2020 base year model databases.

B.2 2010 Foundation Base Year Input Data

The base year for the foundation model input data is 2010. Described briefly as follows are the procedures used to develop the input year dataset for the model.

B.2.1 Creation of the Transportation Analysis Zones (TAZs, TADs)

Subsequent to the 2010 Census, metropolitan planning organizations were given the opportunity to define transportation analysis zones for their respective jurisdictions. In this program, developed by the U.S. Bureau of the Census, each entity could define the transportation analysis zones for their region, and the Census Bureau, in turn, would provide each participating organization with socioeconomic data for their respective regions. This data, derived from the 2006-2010 American Community Survey (ACS), represent a statistical sample of the population. Consequently, margins of error are associated with the data. The criteria established by the Census Bureau in developing the TAZs are that each one should have a minimum population or employment of at least 600 persons. Accordingly, the zones developed by the Pueblo MPO are somewhat larger geographically in order to meet this goal. The net result was that 206 zones were developed, compared to the 306 which were developed subsequent to the 2000 Census. The respective zones were presented for professional review prior to submittal by Scott Ramming, who was employed by J.F. Sato Associates at the time the zones were established (Spring 2011). Additionally, the 206 TAZs were aggregated into seven larger areas, TAD's (Transportation Analysis Districts). Each comprises a population or employment of at least 20,000.

¹ State Demography office , Colorado Division of Local Government <https://demography.dola.colorado.gov/housing-and-households/data/household-projections/#household-projections>, accessed 2020.

B.2.2 Development of Employment Data by TAZ

The development of socioeconomic data for the 206 TAZ's took place during the spring and summer of 2014. The initial, and perhaps most time consuming step of the process required the development of employment estimates by economic sector for the TAZs in the categories shown in Table B.1, below.

Table B.1: PACOG Employment Categories by NAICS Code

Employment Category	NAICS Range
Basic	<= 425120
Retail	441110 - 454390
Services	454111 - 814110
Government	> 814110

For the Pueblo model, employment categories are defined as follows:

- Basic includes farming, forestry, fishing, mining, oil and gas extraction, major construction and manufacturing of all kinds including food, tobacco, lumber and paper, printing, chemicals, medical and optical goods, and wholesale trade;
- Retail includes the sale of building materials, hardware, garden, mobile homes, general merchandise, food, automotive, gasoline, clothing, furniture and miscellaneous;
- Services includes transportation and warehousing, information, finance and insurance, real estate, professional, scientific and technical, management of companies, administrative and support and waste management, educational, health care and social assistance services, arts, entertainment and recreation, and accommodation and food services, as well as other services; and
- Government includes public administration, and other.

The data source for obtaining employment information is the Quarterly Census of Employment and Wages (QCEW), which in Colorado, is administered by the Colorado Department of Labor and Employment (CDLE). Data developed under this program represents the information filed by Colorado employers to meet the mandates of the state Unemployment Insurance (UI) program. Some types of employment are not included, however. These would include some types of agricultural employment, railroad employment, and those employers, mostly sole proprietorships, who do not contribute to the state's unemployment compensation program. QCEW employment accounts for about 80 percent of total employment. Due to the constraint of limited time, no attempt was made to allocate sole-proprietorship employment to individual TAZs. Most of the time allotment to develop the employment was devoted to ensuring that the addresses of the individual employment records were properly allocated to their proper TAZ. This process was performed primarily by Debi Romines and Bootsy Jones of the City of Pueblo's Geographic Information System (GIS) Department. The net result of their efforts was that over 99 percent of the records were assigned a valid physical address.

A secondary, but nonetheless important priority was the need to allocate employment for multiple-establishment businesses to their individual work sites. Most of the individual establishment records in the QCEW dataset have been allocated to their individual work site; however, there are a number of cases where this was not done. Specifically, these include various types of governmental employment, where a value is given for the combined operation, but no information was available for the individual location of actual employment. Examples of this would include fire stations, parks departmental and other employment not associated with the primary governmental address.

B.2.3 Development of Population and Household Data by TAZ

Two primary data sources were the basis for developing the year 2010 dataset: the 2010 Census Summary File 1 block level data, and the 2006-2010 data extracted from the Census Transportation Planning Package (CTPP). Description of the process used to format these to TAZ geography follows:

In addition to providing the basic head count of population and households, the Bureau of the Census conducts various programs which provide data users with more detailed socioeconomic data. Among these is the ACS, which provides estimates of socioeconomic variables on the basis of a statistical sample of the population. In other words; the Summary File 1 data represent a 100 percent count of population housing and household characteristics; the ACS data provides sample data where the sample size is determined by the year and geographic area.

The initial step to developing socioeconomic data for 2010 by TAZ is to aggregate block level 100 percent count data from the 2010 Census Summary File 1 data is to aggregate block level data to the individual TAZs. In short, demographic data are summed from the nearly 8,000 geographic blocks within Pueblo County to the 206 TAZs. This process was undertaken by the City of Pueblo GIS Department in the Spring of 2014. The resulting output of this process is the generation of TAZ-level data on total population, population in households, institutional (group quarters population) and households.

B.2.4 Development of Household Income Data by TAZ

Model data input required the development of households by income class variables, and median household income values. The data source for this operation was the CTPP. For purposes of model development, it was determined that income would be allocated into the following classes as shown in the Table B.2 below:

Table B.2: Income Distribution by Class

Variable Name	Class Interval
HHINC1	\$0 - \$24,999
HHINC2	\$25,000 - \$49,999
HHINC3	\$50,000 - \$74,999
HHINC4	\$75,000 and over

Other than the aggregation of households into the classes noted above, the income data could be directly applied to the model with no need for additional processing, since the level of geography was already set to the TAZ.

B.2.5 Development of School Enrollment Data by TAZ

The final 2010 input data requirement to run the model is data on school enrollment. This was provided for three categories: elementary-middle, high-school, and college. The following organizations assisted in providing the information on their enrollment:

- Pueblo City Schools;
- School District 70;
- Private and parochial schools;
- Pueblo Community College;
- Colorado State University—Pueblo

Additional enrollment statistics were extracted from the Colorado Department of Education (CDE) website: https://edx.cde.state.co.us/SchoolView/DataCenter/reports.aspx?_afrWindowMode=0&_afrLoop=497200140092678&_adf.ctrl-state=13au1dyi5p_29

B.3 Foundation Forecast Year Data Methodology

The framework socioeconomic forecasts developed for the model were for a target date of 2040. The socioeconomic forecasts are prepared for each of the socioeconomic variables for which estimates were done in 2010. A two-step approach was used to develop them. Initially, forecasts were developed for 40 census tract districts encompassing all of Pueblo County. These “census districts” are, in most cases, coextensive with existing census tract boundaries, although in a few cases, several census tracts are combined to create a “super-tract”. The initial forecasts were developed using the Transportation, Economic, Land-Use Model (TELUM), developed by the New Jersey Institute of Transportation (NJIT).

B.3.1 TELUM Forecasting Process

TELUM requires detailed data on land use as well as numerous socioeconomic variables in order to produce its forecasts. The model attempts to simulate economic choice as well as proximity to the existing transportation infrastructure in order to allocate population, households, and employment. An assessment of the amount of available developable land is crucial to the model’s success in generating forecasts. The forecasts for the 40 census zones which comprise Pueblo County were developed during 2012. The TELUM-based forecasts are contained in the following report: [Population and Household Forecasts by Census Tracts and County Subdivisions: 2010-2040](#). The following two tables summarize the forecasts and are keyed to the two maps showing zones within the Pueblo urbanized area and Pueblo rural area. The census zones, as reflected in the tables correspond to those on the maps.

The TELUM model has the ability to forecast employment in addition to population and households. A subsequent evaluation of these results led to the conclusion that they were not particularly accurate, and an alternative methodology for developing employment forecasts was developed, as will be elaborated upon subsequently.

Figure B.1 shows the Census zones in the Pueblo urban area; Figure B.2 shows the Census zones in the Pueblo rural area.

Table B.3: Population Growth Summarized (Census Based)

Zone (Census Tract)	Pop. 2010	Pop. 2020	Pop. 2030	Pop. 2040	Num. Chg. 10- 20	Num. Chg. 20- 30	Num. Chg. 30- 40	Num. Chg. 10- 40	Pct. Chg. 10-20	Pct. Chg. 20-30	Pct. Chg. 30-40	Pct. Chg. 10-40
1	2692	3082	3669	4400	390	587	731	1708	14.5	19.0	19.9	63.4
2	1857	2368	2838	3305	511	470	467	1448	27.5	19.8	16.5	78.0
3	1332	1332	1332	1332	0	0	0	0	0.0	0.0	0.0	0.0
4	2602	2782	2895	3251	180	113	356	649	6.9	4.1	12.3	24.9
5	2204	2270	1958	1930	66	-312	-28	-274	3.0	-13.7	-1.4	-12.4
6	4527	5066	3587	2715	539	-1479	-872	-1812	11.9	-29.2	-24.3	-40.0
7	12749	13160	13181	13671	411	21	490	922	3.2	0.2	3.7	7.2
8	5802	6054	6328	6944	252	274	616	1142	4.3	4.5	9.7	19.7
9	777	880	1085	1318	103	205	233	541	13.3	23.3	21.5	69.6
10	6552	6763	6624	6775	211	-139	151	223	3.2	-2.1	2.3	3.4
11	1375	1448	1009	859	73	-439	-150	-516	5.3	-30.3	-14.9	-37.5
12	3470	3615	3578	3889	145	-37	311	419	4.2	-1.0	8.7	12.1
13	1710	1855	1894	2364	145	39	470	654	8.5	2.1	24.8	38.2
14	4196	4401	4727	5346	205	326	619	1150	4.9	7.4	13.1	27.4
15	2176	2372	2491	2790	196	119	299	614	9.0	5.0	12.0	28.2
16	7248	7447	6463	5846	199	-984	-617	-1402	2.7	-13.2	-9.5	-19.3
17	7054	7249	6630	6144	195	-619	-486	-910	2.8	-8.5	-7.3	-12.9
18	3880	4427	4675	5356	547	248	681	1476	14.1	5.6	14.6	38.0
19	5434	5539	5154	5114	105	-385	-40	-320	1.9	-7.0	-0.8	-5.9
20	5268	5546	5578	5579	278	32	1	311	5.3	0.6	0.0	5.9
21	3586	4008	4579	5371	422	571	792	1785	11.8	14.2	17.3	49.8
22	4661	6281	8601	10649	1620	2320	2048	5988	34.8	36.9	23.8	128.5
23	3519	5549	8100	10076	2030	2551	1976	6557	57.7	46.0	24.4	186.3
24	4430	4878	4663	4249	448	-215	-414	-181	10.1	-4.4	-8.9	-4.1
25	2989	3944	4995	5913	955	1051	918	2924	32.0	26.6	18.4	97.8
26	2914	4259	7293	9586	1345	3034	2293	6672	46.2	71.2	31.4	229.0
27	5901	7213	9765	12428	1312	2552	2663	6527	22.2	35.4	27.3	110.6
28	6646	8846	10813	12149	2200	1967	1336	5503	33.1	22.2	12.4	82.8
29	3905	5289	6746	8023	1384	1457	1277	4118	35.4	27.5	18.9	105.5
30	7618	8682	10217	12164	1064	1535	1947	4546	14.0	17.7	19.1	59.7
31	5735	6596	8029	9748	861	1433	1719	4013	15.0	21.7	21.4	70.0
32	5939	6981	8810	10909	1042	1829	2099	4970	17.5	26.2	23.8	83.7
33	1244	1263	837	1278	19	-426	441	34	1.5	-33.7	52.7	2.7
34	1482	2217	7392	12350	735	5175	4958	10868	49.6	233.4	67.1	733.3
35	2721	3609	4949	5926	888	1340	977	3205	32.6	37.1	19.7	117.8
36	4487	5330	5799	4967	843	469	-832	480	18.8	8.8	-14.3	10.7
37	1885	2239	2645	3330	354	406	685	1445	18.8	18.1	25.9	76.7
38	2210	2685	2961	3480	475	276	519	1270	21.5	10.3	17.5	57.5
39	3572	5574	8942	11632	2002	3368	2690	8060	56.0	60.4	30.1	225.6
40	714	1513	3534	4601	799	2021	1067	3887	111.9	133.6	30.2	544.4
Total	159 063	184 612	215 366	247 757	25549	30754	32391	88694	16.1	16.7	15.0	55.8

Geo Summary	Pop. 2010	Pop. 2020	Pop. 2030	Pop. 2040	Num. Chg. 10- 20	Num. Chg. 20- 30	Num. Chg. 30- 40	Num. Chg. 10- 40	Pct. Chg. 10-20	Pct. Chg. 20-30	Pct. Chg. 30-40	Pct. Chg. 10-40
City	10794 7	11945 0	12968 6	14361 4	11504	10236	13928	35668	10.7	8.6	10.7	33.0
Pueblo West	29843	36394	44615	52993	6551	8221	8378	23150	22.0	22.6	18.8	77.6
Mesa	8582	10254	11405	11777	1672	1151	372	3195	19.5	11.2	3.3	37.2
Beulah	1760	2775	4050	5038	1015	1276	988	3279	57.7	46.0	24.4	186.3
CC.Rye	4661	6281	8601	10649	1620	2320	2048	5988	34.8	36.9	23.8	128.5
Avondale	3572	5574	8942	11632	2002	3368	2690	8060	56.0	60.4	30.1	225.6
NE County	1455	2622	7230	10776	1167	4609	3546	9321	80.2	175.8	49.0	640.6
Balance	1244	1263	837	1278	19	-426	441	34	1.5	-33.7	52.7	2.7
Total	159 063	184 612	215 366	247 757	25549	30754	32391	88694	16.1	16.7	15.0	55.8

Urban												
-------	--	--	--	--	--	--	--	--	--	--	--	--

City + P W	13779 0	15584 4	17430 1	19660 7	18055	18457	22306	58818	13.1	11.8	12.8	42.7
Rural County	21274	28768	41065	51150	7495	12297	10085	29877	35.2	42.7	24.6	140.4
Rural % vs Urban	15.4	18.5	23.6	26.0	41.5	66.6	45.2	50.8	268.9	360.9	191.9	329.0

Table B.4: Household Growth Summarized (Census Based)

Zone (Census Tract)	HH. 2010	HH. 2020	HH 2030	HH. 2040	Num. Chg. 10-20	Num. Chg. 20-30	Num. Chg. 30-40	Num. Chg. 10-40	Pct. Chg. 10-20	Pct. Chg. 20-30	Pct. Chg. 30-40	Pct. Chg. 10-40
1	1219	1408	1648	1914	189	240	266	695	15.5	17.0	16.1	57.0
2	789	1016	1197	1349	227	181	152	560	28.7	17.8	12.7	70.9
3	0	0	0	0	0	0	0	0	0.0	0.0	0.0	0.0
4	1165	1256	1285	1396	91	29	111	231	7.8	2.3	8.6	19.9
5	1053	1094	927	884	41	-167	-43	-169	3.9	-15.3	-4.6	-16.0
6	1931	2222	1445	977	291	-777	-468	-954	15.1	-35.0	-32.4	-49.4
7	4882	5086	5005	5027	204	-81	22	145	4.2	-1.6	0.4	3.0
8	2246	2365	2430	2585	119	65	155	339	5.3	2.7	6.4	15.1
9	38	71	134	199	33	63	65	161	87.2	88.7	48.5	424.6
10	3080	3208	3087	3056	128	-121	-31	-24	4.2	-3.8	-1.0	-0.8
11	619	659	450	369	40	-209	-81	-250	6.4	-31.7	-18.0	-40.4
12	1780	1871	1819	1914	91	-52	95	134	5.1	-2.8	5.2	7.5
13	763	840	844	1034	77	4	190	271	10.1	0.5	22.5	35.5
14	2034	2153	2272	2487	119	119	215	453	5.8	5.5	9.5	22.3
15	1070	1178	1215	1318	108	37	103	248	10.1	3.1	8.5	23.1
16	3106	3219	2745	2403	113	-474	-342	-703	3.7	-14.7	-12.5	-22.6
17	2968	3080	2761	2472	112	-319	-289	-496	3.8	-10.4	-10.5	-16.7
18	1660	1924	2002	2233	264	78	231	573	15.9	4.1	11.5	34.5
19	2184	2245	2052	1971	61	-193	-81	-213	2.8	-8.6	-3.9	-9.7
20	2153	2290	2264	2191	137	-26	-73	38	6.4	-1.1	-3.2	1.8
21	1565	1763	1980	2247	198	217	267	682	12.7	12.3	13.5	43.6
22	1602	2187	2953	3545	585	766	592	1943	36.6	35.0	20.0	121.4
23	1381	2197	3151	3794	816	954	643	2413	59.1	43.4	20.4	174.7
24	1607	1785	1677	1479	178	-108	-198	-128	11.1	-6.1	-11.8	-7.9
25	1152	1535	1910	2188	383	375	278	1036	33.2	24.4	14.6	89.9
26	982	1450	2440	3105	468	990	665	2123	47.6	68.3	27.3	216.1
27	2429	2996	3985	4910	567	989	925	2481	23.3	33.0	23.2	102.1
28	1834	2462	2958	3216	628	496	258	1382	34.2	20.1	8.7	75.3
29	1394	1906	2389	2750	512	483	361	1356	36.7	25.3	15.1	97.2
30	2899	3334	3856	4446	435	522	590	1547	15.0	15.7	15.3	53.4
31	2149	2498	2994	3524	349	496	530	1375	16.2	19.9	17.7	64.0
32	2310	2740	3400	4077	430	660	677	1767	18.6	24.1	19.9	76.5
33	548	560	365	539	12	-195	174	-9	2.3	-34.8	47.7	-1.6
34	410	625	2074	3362	215	1449	1288	2952	52.4	231.8	62.1	719.8
35	934	1291	1785	2092	357	494	307	1158	38.2	38.3	17.2	124.0
36	1644	1976	2114	1749	332	138	-365	105	20.2	7.0	-17.3	6.4
37	806	966	1121	1366	160	155	245	560	19.9	16.0	21.9	69.5
38	931	1141	1237	1407	210	96	170	476	22.6	8.4	13.7	51.1
39	1314	2070	3263	4108	756	1193	845	2794	57.5	57.6	25.9	212.5
40	351	755	1738	2191	404	983	453	1840	115.3	130.2	26.1	524.8
Total	62982	73422	82972	91874	10440	9550	8902	28892	16.6	13.0	10.7	45.9
City	44306	49416	51972	55378	5110	2556	3407	11072	11.5	5.2	6.6	25.0
Pueblo												
West	10586	12940	15597	18013	2354	2657	2416	7427	22.2	20.5	15.5	70.2
Mesa	3380	4083	4472	4522	703	389	50	1142	20.8	9.5	1.1	33.8
Beulah	691	1099	1576	1897	408	477	322	1206	59.1	43.4	20.4	174.7
C.C.Rye	1602	2187	2953	3545	585	766	592	1943	36.6	35.0	20.0	121.4
Avondale	1314	2070	3263	4108	756	1193	845	2794	57.5	57.6	25.9	212.5
NE												
County	556	1068	2775	3872	512	1708	1097	3316	92.1	160.0	39.5	596.8
Balance	548	560	365	539	12	-195	174	-9	2.3	-34.8	47.7	-1.6
Total	62982	73422	82972	91874	10440	9550	8902	28892	16.6	13.0	10.7	45.9

Figure B.1: Census Zones – Pueblo Urban Area*

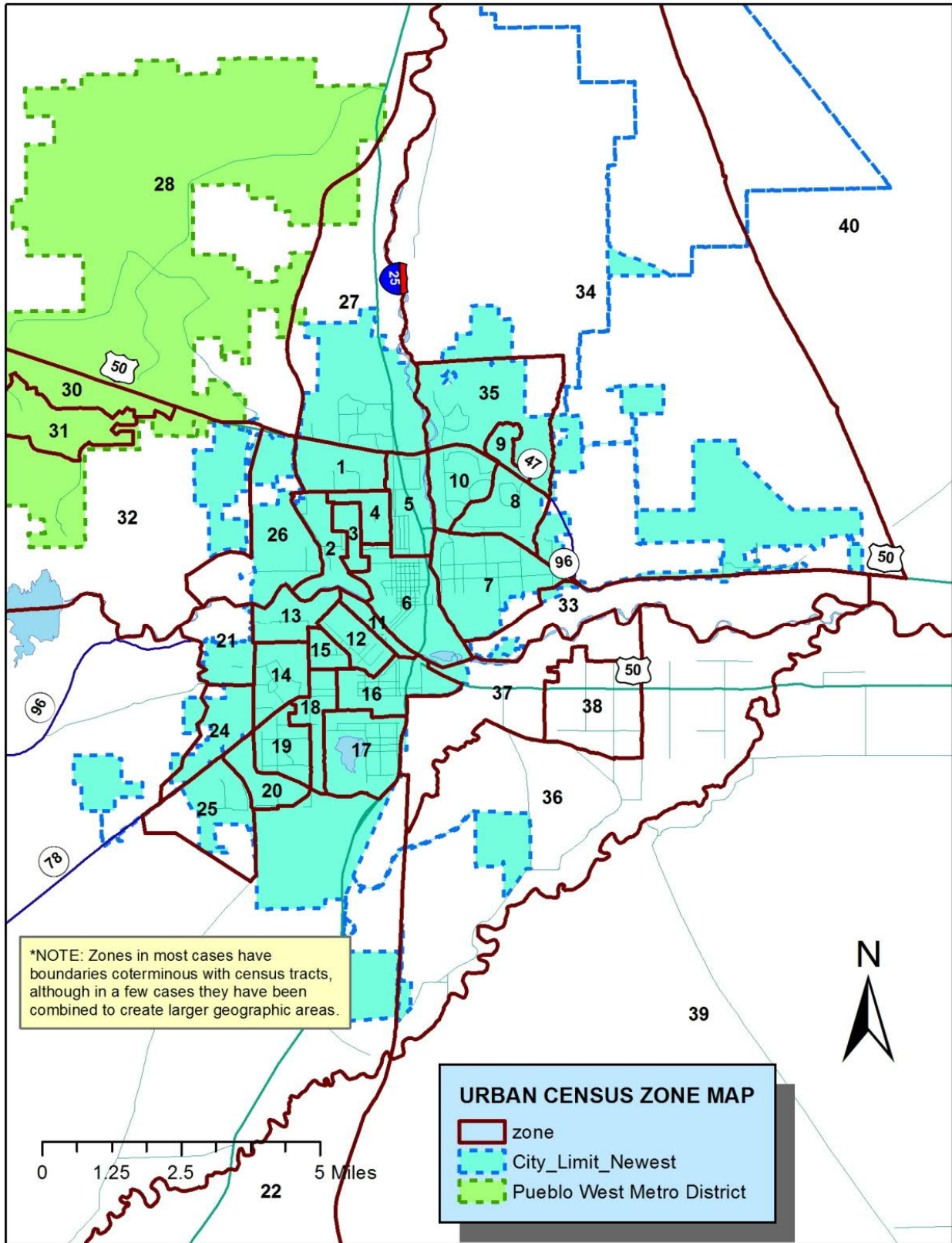
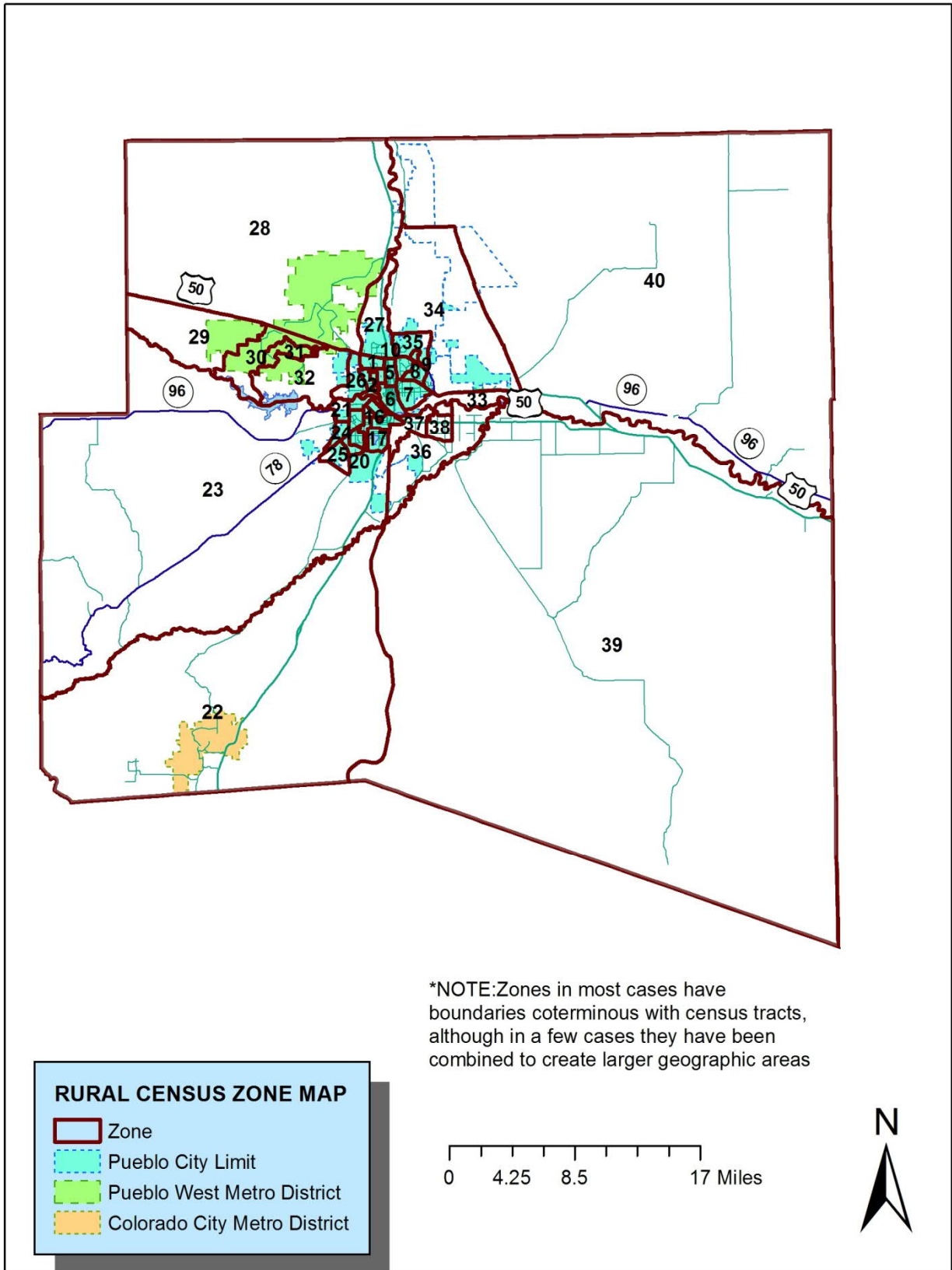


Figure B.2: Census Zones – Rural Area*



B.3.2 Forecasts of Population and Housing by TAZ

As noted above, a top-down methodology was used to develop the forecasts of population and households. The forecasts developed by the TELUM model for 40 zones provide a constraint to development by limiting of growth which might otherwise occur in an individual TAZ. Given the constraint of limited time, a shift-share technique of allocating the zonal forecasts to individual TAZs was utilized. Since the boundaries of individual TAZs can, in most cases, be aggregated to conform to the larger zonal boundaries, this technique seemed a feasible one to employ to develop the forecasts at the TAZ level of geography.

Population and household data from the 2000 and 2010 censuses were aggregated from the block level of geography to the TAZ level using a GIS-based operation. As noted above, a shift-share methodology evaluated the individual TAZ's share of zonal population in 2000 and in 2010. In each case, the zonal population (or households) served as a constraint to each TAZ's level of growth. The ten-year shift in growth was extrapolated to 2020, 2030, 2040 and adapted to populate 2045.

B.3.3 Employment Forecasts by Economic Sector by TAZ

Actual employment data were available for two points in time; 2005 and 2010. An evaluation of this data made it clear that employment within some TAZs showed dramatic shifts from 2005 to 2010. A simple extrapolation of data from these two years would result in wildly unrealistic values. Consequently, an additional data point for 2015 was created based on applying a weighted value of the 2005 and 2010 values in the proportion of 33 percent of the 2005 value to 67 percent of the 2010 value. This established a third, albeit artificial data point in which to extrapolate employment trends. As the initial step in developing the forecasted values, data from these three years were extrapolated to 2040 using a linear trend. This was done for each type of economic sector; Basic, Retail, Services and Government. The 2045 employment values drew on the 2040 totals by TAZ and the 2045 state demographer estimated for employment within Pueblo County.

To further constrain growth within individual TAZ's, employment was adjusted to a county-wide control total of employment by industry forecasts developed by the Labor market Section of the Colorado Division of Labor and Employment. These were available for the ten year period of 2012 to 2022. The growth rate within each industry during this period was extrapolated to 2040, and each set of industry-level forecasts were summarized to the four broad economic sectors noted above. This established county-level forecasts by industry for each year on an annual basis to 2040. The initial TAZ-level forecasts were adjusted to sum to the corresponding county-wide control total for each economic sector. Again, the use of a top-down approach provides a constraint on growth within each individual TAZ.

B.3.4 Median Household Income Forecasts by TAZ

County-wide forecasts of income by classes were available from the economic forecasting group of Woods & Poole Economics. Although for the dataset which we had, a median income value was not available, it was nevertheless possible to calculate a median based on the forecasted household values provided for each class interval. County-wide income by class data are outlined below, along with the respective calculated median for 2020, 2030, and 2040. Although changes within each TAZ are assumed to be consistent with the county-wide change in income, the historic trend tends to indicate that for small, neighborhood-sized areas, i.e. census tracts, their ranking relative to the entire county stays very consistent over time. Although neighborhoods do decline, generally speaking, the wealthy ones tend to stay wealthy, and the poor ones, unfortunately, remain poor. Monetary values for the estimates of median household income are in constant, not current dollars, so the net change over time is solely due to increased prosperity, not inflationary effects.

Table B.5: Household Income Forecast by Class Interval

Class Range	2020	2030	2040
Less than \$10,000	5,634	4,482	3,439
\$10,000 - \$19,999	8,002	6,365	4,884
\$20,000 - \$29,999	7,483	5,952	4,568
\$30,000 - \$44,999	12,246	9,740	7,475
\$45,000 - \$59,999	13,324	15,456	12,456
\$60,000 - \$74,999	8,177	12,018	16,297
\$75,000 - \$99,999	7,084	10,413	15,038
\$100,000 - \$124,999	2,512	3,693	5,333
\$125,000 - \$149,999	1,135	1,669	2,410
\$150,000 - \$199,999	887	1,303	1,882
\$200,000 or more	1,164	1,711	2,471
Total	67,648	72,802	76,253
Median Income	\$45,517	\$54,571	\$64,882

B.3.5 School Enrollment Forecasts by TAZ

Initially, due to time constraints, and the difficulty of developing accurate ones, long-range forecasts of school enrollment were not prepared for 2040. Instead, the 2010 enrollment values were held constant for 2040. There are many difficulties involved in developing accurate forecasts of school enrollment for areas as small as TAZs. In addition to those of forecasting the long-term demographic trends of the school-age population, these include the availability of land tracts for school development; largely an unpredictable matter. However, in the summer of 2015, to improve the overall accuracy of the model, a set of school enrollment forecasts were subsequently developed to 2040. Enrollment data was provided by Pueblo City Schools, and District 70 (County schools). For the City of Pueblo schools, forecasts of enrollment for individual schools were available to 2020; for County level schools (District 70), forecasts were provided for 2015 only. A somewhat differing methodology was used to develop the forecasts for these two entities, due to the differences in the available data.

For City of Pueblo schools, the forecasted enrollment change from 2015 to 2020 was extrapolated to 2040. Since Pueblo City Schools provided data on the enrollment capacity of individual schools, these were used as a cross-check to evaluate the reasonableness of the forecasts. In some cases, where the results of the mathematical trend extrapolation seemed unreasonable, forecasts were revised using human judgment. In these cases, the numbers for the forecasts on the spreadsheet were delineated in red.

For County-wide schools, since data on forecasts were available only to 2015, an annual exponential growth rate was applied to the growth from 2014 to 2015 and extended to 2020. The forecasts subsequent to 2020 were developed in the manner described above for City-level schools.

To assess the reasonableness of these forecasts, they were subsequently compared to a series developed by the consultant (HDR) which assumed that school enrollment growth is largely dependent on growth in households. This served as a cross-check on the initial series of forecasts.

B.4 2020/2045 Update Methodology

In 2020, PACOG launched the 2045 Long Range Transportation Plan which required the development of a new TAZ system and data to serve a revised 2020 base year and a 2045 forecast year.

B.4.1 2020 Traffic Analysis Zone Redefinition

The 2020 PACOG Travel Demand Model required an update of the Traffic Analysis Zone (TAZ) system. The reason for the update was the need to prepare the zone system and accompanying modeling highway network for planned expansion in the PACOG MPO area with additional detail to capture areas of growth. Accordingly, the previous zone system was reviewed, and the update completed.

1. Data requirements for editing guidance were as follows:
 - Census Block Geography – the latest available Census geography is the 2010; no changes were made in the years 2010-2020 to the 7,854 Census Blocks within Pueblo County.
 - Previous travel model TAZ layer with 211 internal and 7 external zones for a total of 219 zones.
 - Previous travel model highway network with 2,980 segments typically used to review any new roads needed in the network and search for illogical centroid connectors.
 - Digital imagery (Google Hybrid) for review of land use and terrain.
 - Local new growth elements:
 - GIS shape file of North Vista Annexation
 - Residential development in zoning/planning (Dillon Drive area)
2. Decision criteria for TAZ division are as follows:
 - Integrate North Vista annexation plans and Dillon Drive area planned development
 - Reflect planned growth areas in the northeast of the county where currently the TAZ system contains very large zones. Currently unpaved roads may be valuable to use as guidance for future roadway placement. Review large rural zones throughout the county.
 - Respect the 2010 TAZ system, Census Block geography, the road system on the ground now and natural boundaries.
 - Review centroid connector placement; where the TAZ system is driving unusual connector placement, revision is necessary.
 - Eliminate “wrap-around zones, “U”-shaped geometry that makes traffic loading uneven.
 - Normalize the number of square miles of PACOG TAZ; TAZs currently range from .02 to 788 square miles. Even in rural areas of the MPO area, there can be more consistency in zone size.

The 2015 zone system had 219 zones; the 2020 has 16 additional zones. The locations where zones were added can be seen in Figure B.3 2020 TAZ Edits. There is added detail in the North Vista and Dillon Drive areas. Rural areas in the northeast and southwest of the county received additional TAZs. The eight external traffic stations were not altered. Tables B.6 and B.7 show the change in the number of zones and the numbering scheme adopted.

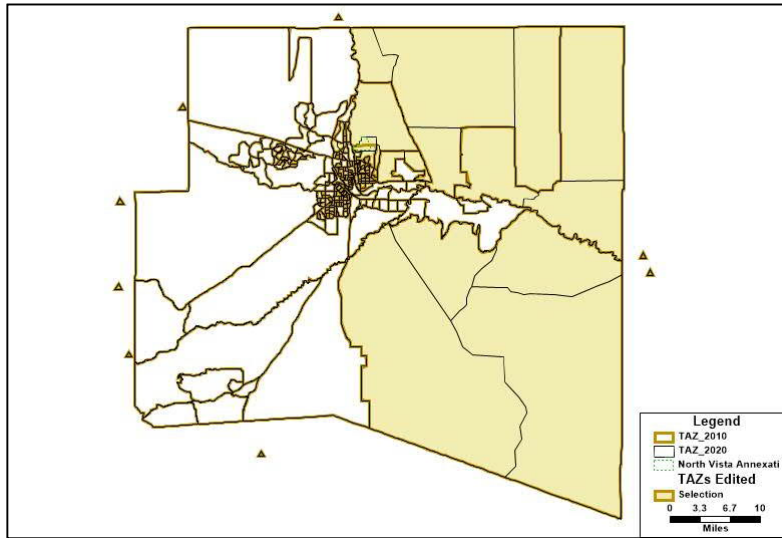
Table B.6: Dimensions of 2015 vs 2020 PACOG TAZ System

Zone System	Number of Internal TAZ	Number of External TAZ	Total TAZ
2015 TAZ	211	8	219
2020 TAZ	227	8	235

Table B.7: Numbering Scheme of 2015 vs 2020 PACOG TAZ System

Numbering Scheme	Internal TAZ	External TAZ
2015 TAZ	1-211	212-219
2020 TAZ	1-211 old / 251-266 new	301-308

Figure B.3: 2020 TAZ Edits



B.4.2 2020 Socioeconomic Data: 2020 and 2045

The 2020 PACOG Travel Demand Model required an update of the Socioeconomic (SE) data required for planning and modeling purposes. The PACOG model has a revised TAZ system for the 2020 update as well as a new horizon year (2045) requiring that the SE data be refreshed from the most recent data and disaggregated to the revised zone system. The revised control total are shown in Table B.8. The procedure followed these steps:

1. Using the 2010 SE data, disaggregate all attributes to the new 235 TAZ system.
2. Using the Colorado Department of Local Affairs (DOLA) 2 demographic information and forecasts, “grow” the disaggregated 2010 data to a 2020 base.
 - o Total population
 - o Number of Households
 - o Total Employment
3. Using the 2040 SE data, disaggregate all attributes to the new 235 TAZ system.
4. Using the Colorado Department of Local Affairs (DOLA) demographic information and forecasts growth factors, “grow” the disaggregated 2040 data to a 2045 future.
5. Review for consistent distribution across the newly split zones.

Table B.8: 2020 and 2045 Socioeconomic Totals

Year	Population in HHs	Households	Total Employment
2020	163,404	66,451	57,851
2045	223,288	84,274	83,573

B.4.3 Summary of Socioeconomic Forecasts Data by TAZ:

Three tables are provided which present the 2020 and 2045 scenarios developed in May 2020. Table B.9: Summary Demographic Variables by Transportation Analysis Zone, Table B.10: Summary Economic Variables by Transportation Analysis Zone, and Table B.11: School Enrollment by Transportation Analysis Zone

² State Demography office , Colorado Division of Local Government <https://demography.dola.colorado.gov/housing-and-households/data/household-projections/#household-projections>, accessed 2020.

Table B.9: Summary Demographic Variables by Transportation Analysis Zone

TAZ	Population 2020	Population 2045	Numerical Population Change	Percent Population Change	Group Quarters Population 2020	Group Quarters Population 2045	Households 2020	Households 2045	Numerical Household Change	Percent Household Change
1	178	63	(115)	-65%	554	507	94	30	(64)	-68%
2	42	17	(25)	-60%	-	1	27	10	(17)	-63%
3	4	4	-	0%	24	23	-	3	3	n/a
4	420	169	(251)	-60%	-	-	328	117	(211)	-64%
5	17	5	(12)	-71%	-	-	15	4	(11)	-73%
6	17	6	(11)	-65%	-	-	-	5	5	n/a
7	67	278	211	315%	-	17	46	113	67	146%
8	602	216	(386)	-64%	5	10	282	86	(196)	-70%
9	169	64	(105)	-62%	-	4	163	56	(107)	-66%
10	56	84	28	50%	89	31	42	80	38	90%
11	124	44	(80)	-65%	22	12	50	17	(33)	-66%
12	39	34	(5)	-13%	-	2	-	18	18	n/a
13	77	42	(35)	-45%	-	3	57	23	(34)	-60%
14	118	52	(66)	-56%	-	-	71	29	(42)	-59%
15	627	215	(412)	-66%	34	23	297	92	(205)	-69%
16	749	295	(454)	-61%	5	17	321	116	(205)	-64%
17	740	264	(476)	-64%	-	16	302	96	(206)	-68%
18	-	-	-	n/a	1,407	1,160	-	-	-	n/a
19	753	879	126	17%	-	-	375	402	27	7%
20	644	624	(20)	-3%	-	2	275	276	1	0%
21	653	713	60	9%	-	2	290	303	13	4%
22	698	766	68	10%	-	2	281	301	20	7%
23	244	161	(83)	-34%	-	-	118	81	(37)	-31%
24	707	554	(153)	-22%	-	-	328	261	(67)	-20%
25	676	550	(126)	-19%	2	3	303	235	(68)	-22%
26	450	371	(79)	-18%	-	-	216	178	(38)	-18%
27	-	-	-	n/a	-	-	-	-	-	n/a
28	248	129	(119)	-48%	-	-	112	55	(57)	-51%
29	862	718	(144)	-17%	5	26	422	338	(84)	-20%
30	665	636	(29)	-4%	-	-	352	311	(41)	-12%
31	793	704	(89)	-11%	-	17	399	326	(73)	-18%
32	1,226	1,228	2	0%	65	-	733	701	(32)	-4%
33	780	619	(161)	-21%	-	17	321	250	(71)	-22%
34	809	716	(93)	-11%	1	20	365	308	(57)	-16%
35	966	941	(25)	-3%	-	25	413	367	(46)	-11%
36	746	590	(156)	-21%	-	16	285	203	(82)	-29%
37	742	645	(97)	-13%	121	104	295	249	(46)	-16%
38	854	675	(179)	-21%	-	-	402	349	(53)	-13%
39	656	553	(103)	-16%	-	-	230	194	(36)	-16%
40	631	502	(129)	-20%	-	-	247	213	(34)	-14%
41	966	910	(56)	-6%	1	-	345	320	(25)	-7%
42	1,325	1,220	(105)	-8%	2	-	511	467	(44)	-9%
43	712	687	(25)	-4%	-	-	265	244	(21)	-8%
44	1,158	830	(328)	-28%	14	15	560	396	(164)	-29%
45	688	441	(247)	-36%	-	3	312	187	(125)	-40%
46	794	779	(15)	-2%	-	6	395	378	(17)	-4%
47	1,084	1,007	(77)	-7%	-	1	515	497	(18)	-3%
48	693	634	(59)	-9%	-	6	334	316	(18)	-5%
49	684	653	(31)	-5%	-	-	341	320	(21)	-6%
50	881	666	(215)	-24%	-	-	360	276	(84)	-23%

Table B.9: Summary Demographic Variables by Transportation Analysis Zone, continued

TAZ	Population 2020	Population 2045	Numerical Population Change	Percent Population Change	Group Quarters Population 2020	Group Quarters Population 2045	Households 2020	Households 2045	Numerical Household Change	Percent Household Change
51	1,165	1,670	505	43%	-	-	520	783	263	51%
52	710	889	179	25%	-	-	331	426	95	29%
53	959	939	(20)	-2%	-	-	444	416	(28)	-6%
54	1,139	1,115	(24)	-2%	131	104	546	532	(14)	-3%
55	791	1,433	642	81%	-	-	300	546	246	82%
56	1,170	1,599	429	37%	-	5	461	692	231	50%
57	890	1,550	660	74%	15	26	405	721	316	78%
58	1,129	1,416	287	25%	-	-	476	579	103	22%
59	809	1,057	248	31%	-	-	377	457	80	21%
60	1,495	1,566	71	5%	-	4	589	539	(50)	-8%
61	642	666	24	4%	-	2	229	216	(13)	-6%
62	1,416	1,327	(89)	-6%	-	3	494	450	(44)	-9%
63	559	594	35	6%	-	2	216	197	(19)	-9%
64	612	613	1	0%	82	41	275	248	(27)	-10%
65	1,320	1,532	212	16%	-	4	641	721	80	12%
66	1,017	1,102	85	8%	-	-	396	411	15	4%
67	884	842	(42)	-5%	-	-	340	332	(8)	-2%
68	1,569	1,711	142	9%	-	-	521	526	5	1%
69	766	665	(101)	-13%	-	-	281	225	(56)	-20%
70	714	686	(28)	-4%	-	-	264	229	(35)	-13%
71	634	611	(23)	-4%	-	-	227	205	(22)	-10%
72	1,054	923	(131)	-12%	-	-	392	349	(43)	-11%
73	814	703	(111)	-14%	-	-	326	297	(29)	-9%
74	1,109	744	(365)	-33%	3	2	486	330	(156)	-32%
75	721	471	(250)	-35%	-	1	297	204	(93)	-31%
76	1,094	729	(365)	-33%	-	-	432	282	(150)	-35%
77	962	645	(317)	-33%	-	1	383	248	(135)	-35%
78	772	518	(254)	-33%	-	1	338	224	(114)	-34%
79	329	324	(5)	-2%	-	-	154	159	5	3%
80	801	938	137	17%	-	-	265	283	18	7%
81	449	589	140	31%	220	150	210	273	63	30%
82	1,354	1,603	249	18%	-	-	573	661	88	15%
83	1,228	1,236	8	1%	-	-	588	606	18	3%
84	650	744	94	14%	-	-	313	348	35	11%
85	873	1,156	283	32%	-	-	396	542	146	37%
86	990	967	(23)	-2%	-	-	416	418	2	0%
87	688	801	113	16%	-	-	294	366	72	24%
88	818	597	(221)	-27%	-	-	373	248	(125)	-34%
89	940	809	(131)	-14%	-	1	354	258	(96)	-27%
90	958	950	(8)	-1%	-	1	410	370	(40)	-10%
91	1,071	2,570	1,499	140%	-	2	484	1,186	702	145%
92	747	3,000	2,253	302%	-	-	372	1,435	1,063	286%
93	888	1,413	525	59%	-	-	335	382	47	14%
94	863	2,274	1,411	163%	-	-	286	533	247	86%
95	576	2,101	1,525	265%	4	19	204	498	294	144%
96	645	1,833	1,188	184%	-	-	318	1,053	735	231%
97	27	50	23	85%	1	2	12	17	5	42%
98	655	577	(78)	-12%	-	-	324	225	(99)	-31%
99	51	121	70	137%	-	-	34	74	40	118%
100	849	1,169	320	38%	-	-	389	502	113	29%

Table B.9: Summary Demographic Variables by Transportation Analysis Zone, continued

TAZ	Population 2020	Population 2045	Numerical Population Change	Percent Population Change	Group Quarters Population 2020	Group Quarters Population 2045	Households 2020	Households 2045	Numerical Household Change	Percent Household Change
101	869	711	(158)	-18%	-	-	317	225	(92)	-29%
102	695	992	297	43%	-	-	279	382	103	37%
103	819	3,524	2,705	330%	-	-	299	1,111	812	272%
104	634	1,081	447	71%	-	-	233	371	138	59%
105	186	165	(21)	-11%	-	-	65	50	(15)	-23%
106	619	1,227	608	98%	182	173	251	505	254	101%
107	1,384	2,860	1,476	107%	-	-	496	980	484	98%
108	128	607	479	374%	693	2,477	36	183	147	408%
109	642	5,667	5,025	783%	-	-	225	1,289	1,064	473%
110	6	12	6	100%	-	-	4	6	2	50%
111	-	-	-	n/a	-	-	-	-	-	n/a
112	812	5,104	4,292	529%	44	92	329	1,672	1,343	408%
113	346	330	(16)	-5%	-	1	151	163	12	8%
114	852	842	(10)	-1%	-	-	323	331	8	2%
115	718	484	(234)	-33%	-	1	302	216	(86)	-28%
116	912	633	(279)	-31%	-	1	359	234	(125)	-35%
117	661	469	(192)	-29%	-	1	285	191	(94)	-33%
118	860	470	(390)	-45%	20	18	353	188	(165)	-47%
119	863	476	(387)	-45%	-	4	323	174	(149)	-46%
120	839	433	(406)	-48%	-	4	359	195	(164)	-46%
121	801	443	(358)	-45%	164	67	421	227	(194)	-46%
122	637	1,917	1,280	201%	-	15	254	730	476	187%
123	576	314	(262)	-45%	2	5	258	148	(110)	-43%
124	817	388	(429)	-53%	-	3	354	183	(171)	-48%
125	619	401	(218)	-35%	-	3	273	182	(91)	-33%
126	568	281	(287)	-51%	-	2	221	107	(114)	-52%
127	578	351	(227)	-39%	-	3	222	133	(89)	-40%
128	975	672	(303)	-31%	-	-	434	270	(164)	-38%
129	941	1,265	324	34%	3	4	527	671	144	27%
130	546	516	(30)	-5%	15	20	213	188	(25)	-12%
131	1,717	1,469	(248)	-14%	-	-	724	591	(133)	-18%
132	848	697	(151)	-18%	-	-	331	248	(83)	-25%
133	997	795	(202)	-20%	-	-	394	310	(84)	-21%
134	718	527	(191)	-27%	-	-	298	203	(95)	-32%
135	1,356	1,228	(128)	-9%	174	117	738	691	(47)	-6%
136	1,054	877	(177)	-17%	-	-	376	314	(62)	-16%
137	1,485	1,507	22	1%	3	2	499	508	9	2%
138	1,412	1,349	(63)	-4%	2	1	521	497	(24)	-5%
139	1,234	1,835	601	49%	-	-	473	732	259	55%
140	884	1,316	432	49%	-	-	347	540	193	56%
141	1,038	2,272	1,234	119%	-	-	352	735	383	109%
142	1,026	272	(754)	-73%	-	-	401	92	(309)	-77%
143	1,307	442	(865)	-66%	-	-	514	151	(363)	-71%
144	1,377	2,293	916	67%	-	-	483	745	262	54%
145	967	891	(76)	-8%	-	-	382	368	(14)	-4%
146	862	871	9	1%	-	5	357	364	7	2%
147	1,007	978	(29)	-3%	-	6	381	387	6	2%
148	746	819	73	10%	-	5	264	286	22	8%
149	986	994	8	1%	-	4	370	386	16	4%
150	1,073	1,641	568	53%	10	-	409	637	228	56%

Table B.9: Summary Demographic Variables by Transportation Analysis Zone, continued

TAZ	Population 2020	Population 2045	Numerical Population Change	Percent Population Change	Group Quarters Population 2020	Group Quarters Population 2045	Households 2020	Households 2045	Numerical Household Change	Percent Household Change
151	885	1,133	248	28%	10	-	331	408	77	23%
152	709	968	259	37%	11	7	276	404	128	46%
153	1,566	2,109	543	35%	20	23	521	704	183	35%
154	975	1,379	404	41%	25	12	364	551	187	51%
155	1,364	2,466	1,102	81%	-	1	515	979	464	90%
156	1,017	2,221	1,204	118%	-	1	350	725	375	107%
157	806	1,174	368	46%	-	1	279	398	119	43%
158	721	1,461	740	103%	-	-	266	486	220	83%
159	917	1,529	612	67%	17	10	326	529	203	62%
160	1,008	1,432	424	42%	3	2	379	558	179	47%
161	706	1,404	698	99%	16	5	250	460	210	84%
162	782	1,004	222	28%	3	5	293	349	56	19%
163	891	929	38	4%	-	1	396	460	64	16%
164	727	791	64	9%	-	-	304	369	65	21%
165	1,057	1,739	682	65%	-	9	365	617	252	69%
166	816	1,641	825	101%	-	9	271	546	275	101%
167	734	1,323	589	80%	-	7	260	448	188	72%
168	900	1,619	719	80%	-	-	345	568	223	65%
169	806	1,346	540	67%	-	-	287	447	160	56%
170	1,235	2,208	973	79%	-	-	447	779	332	74%
171	1,086	2,187	1,101	101%	-	-	399	729	330	83%
172	754	493	(261)	-35%	-	1	263	130	(133)	-51%
173	823	1,038	215	26%	-	1	295	311	16	5%
174	1,069	1,101	32	3%	-	-	370	294	(76)	-21%
175	906	1,349	443	49%	-	1	313	297	(16)	-5%
176	891	1,719	828	93%	-	2	314	474	160	51%
177	970	3,586	2,616	270%	-	4	331	1,010	679	205%
178	906	1,223	317	35%	-	1	294	299	5	2%
179	699	634	(65)	-9%	-	1	225	135	(90)	-40%
180	58	272	214	369%	-	-	22	96	74	336%
181	325	1,890	1,565	482%	4	5	139	935	796	573%
182	553	726	173	31%	-	-	223	307	84	38%
183	609	920	311	51%	-	8	253	394	141	56%
184	1,022	1,568	546	53%	3	17	385	599	214	56%
185	371	588	217	58%	-	6	152	238	86	57%
186	693	1,027	334	48%	-	1	278	422	144	52%
187	999	1,414	415	42%	-	-	400	582	182	46%
188	1,373	1,512	139	10%	-	-	504	515	11	2%
189	970	937	(33)	-3%	-	-	353	319	(34)	-10%
190	1,155	1,034	(121)	-10%	-	-	427	386	(41)	-10%
191	1,219	1,002	(217)	-18%	83	79	455	384	(71)	-16%
192	654	2,151	1,497	229%	-	7	246	737	491	200%
193	1,291	3,527	2,236	173%	-	-	507	1,275	768	151%
194	730	1,812	1,082	148%	-	6	259	598	339	131%
195	465	1,283	818	176%	-	5	173	467	294	170%
196	762	1,633	871	114%	-	-	315	546	231	73%
197	712	2,028	1,316	185%	-	-	276	685	409	148%
198	799	1,410	611	76%	-	-	312	448	136	44%
199	637	1,225	588	92%	-	-	253	375	122	48%
200	639	1,014	375	59%	-	-	273	365	92	34%

Table B.9: Summary Demographic Variables by Transportation Analysis Zone, continued

TAZ	Population 2020	Population 2045	Numerical Population Change	Percent Population Change	Group Quarters Population 2020	Group Quarters Population 2045	Households 2020	Households 2045	Numerical Household Change	Percent Household Change
201	790	1,258	468	59%	-	-	319	438	119	37%
202	576	1,129	553	96%	82	95	245	394	149	61%
203	1,055	906	(149)	-14%	-	-	434	473	39	9%
204	1,265	7,406	6,141	485%	-	-	416	2,540	2,124	511%
205	616	537	(79)	-13%	1	1	238	229	(9)	-4%
206	704	392	(312)	-44%	-	-	340	238	(102)	-30%
207	18	32	14	78%	-	1	7	11	4	57%
208	37	66	29	78%	1	3	16	22	6	38%
209	52	93	41	79%	1	4	22	30	8	36%
210	10	18	8	80%	-	1	4	6	2	50%
211	20	35	15	75%	-	2	8	12	4	50%
251	172	488	316	184%	-	-	84	280	196	233%
252	103	93	(10)	-10%	-	-	37	28	(9)	-24%
253	381	340	(41)	-11%	-	-	134	105	(29)	-22%
254	561	1,307	746	133%	156	150	226	492	266	118%
255	7	66	59	843%	-	-	2	15	13	650%
256	20	181	161	805%	-	-	7	41	34	486%
257	4	8	4	100%	-	-	2	4	2	100%
258	7	37	30	429%	-	-	3	13	10	333%
259	13	59	46	354%	-	-	5	21	16	320%
260	35	164	129	369%	-	-	14	59	45	321%
261	141	822	681	483%	2	2	60	406	346	577%
262	167	969	802	480%	2	3	72	480	408	567%
263	448	1,237	789	176%	-	5	167	450	283	169%
264	137	380	243	177%	-	1	52	139	87	167%
265	100	279	179	179%	-	1	38	102	64	168%
266	5	9	4	80%	-	-	2	3	1	50%
Total	163,403	223,289	59,886	37%	4,559	6,003	66,454	84,277	17,823	27%

Table B.10: Summary Employment Variables by Transportation Analysis Zone

TAZ	Total Employment 2020	Total Employment 2045	Numerical Employment Change	Percent Employment Change	2020 Basic Employment	2045 Basic Employment	2020 Retail Employment	2045 Retail Employment	2020 Service Employment	2045 Service Employment	2020 Government Employment	2045 Government Employment
1	749	987	238	32%	13	10	4	-	238	437	494	540
2	950	1,538	588	62%	-	-	-	-	53	33	897	1,505
3	806	1,700	894	111%	16	6	16	15	647	1,477	127	202
4	516	742	226	44%	-	-	126	76	323	604	67	62
5	486	184	(302)	-62%	74	110	42	-	370	74	-	-
6	1,014	2,863	1,849	182%	17	15	53	64	662	1,941	282	843
7	650	928	278	43%	33	43	-	-	560	806	57	79
8	810	995	185	23%	187	94	95	80	348	485	180	336
9	544	421	(123)	-23%	30	-	16	7	337	414	161	-
10	669	858	189	28%	238	301	91	131	340	426	-	-
11	2,046	5,286	3,240	158%	170	146	59	10	1,803	5,116	14	14
12	364	466	102	28%	149	123	-	-	163	259	52	84
13	1,646	3,051	1,405	85%	140	-	38	24	1,068	2,249	400	778
14	275	630	355	129%	-	-	-	-	275	630	-	-
15	225	287	62	28%	-	-	5	-	197	273	23	14
16	19	26	7	37%	14	20	5	6	-	-	-	-
17	16	6	(10)	-63%	5	-	7	6	4	-	-	-
18	1,899	2,955	1,056	56%	-	-	-	-	1,232	1,900	667	1,055
19	262	434	172	66%	1	1	-	-	261	433	-	-
20	17	-	(17)	-100%	1	-	-	-	16	-	-	-
21	14	34	20	143%	-	-	-	-	4	11	10	23
22	5	15	10	200%	-	-	-	-	5	15	-	-
23	2,570	4,524	1,954	76%	-	-	-	-	2,570	4,524	-	-
24	7	-	(7)	-100%	1	-	-	-	6	-	-	-
25	206	403	197	96%	19	27	39	27	148	349	-	-
26	400	195	(205)	-51%	22	-	264	183	114	12	-	-
27	1,254	1,395	141	11%	-	-	908	840	346	555	-	-
28	930	1,466	536	58%	4	-	190	173	736	1,293	-	-
29	241	204	(37)	-15%	-	-	14	16	227	188	-	-
30	237	582	345	146%	2	-	-	-	235	582	-	-
31	40	46	6	15%	-	-	-	-	40	46	-	-
32	455	697	242	53%	3	9	36	18	416	670	-	-
33	2	4	2	100%	2	4	-	-	-	-	-	-
34	24	27	3	13%	3	-	-	-	5	-	16	27
35	125	161	36	29%	6	16	-	-	119	145	-	-
36	-	-	-	n/a	-	-	-	-	-	-	-	-
37	548	375	(173)	-32%	336	235	24	18	188	122	-	-
38	3	-	(3)	-100%	-	-	-	-	3	-	-	-
39	31	42	11	35%	31	42	-	-	-	-	-	-
40	8	-	(8)	-100%	-	-	-	-	8	-	-	-
41	48	67	19	40%	11	6	11	13	26	48	-	-
42	70	107	37	53%	-	-	7	7	63	100	-	-
43	23	37	14	61%	8	11	14	26	1	-	-	-
44	444	224	(220)	-50%	38	28	10	1	395	192	1	3
45	218	82	(136)	-62%	45	68	34	14	139	-	-	-
46	947	1,469	522	55%	-	-	-	-	935	1,443	12	26
47	39	35	(4)	-10%	1	-	16	25	22	10	-	-
48	187	147	(40)	-21%	12	9	21	25	148	100	6	13
49	865	1,179	314	36%	30	21	34	36	801	1,122	-	-
50	97	144	47	48%	-	-	36	51	61	93	-	-

Table B.10: Summary Employment Variables by Transportation Analysis Zone, continued

TAZ	Total Employment 2020	Total Employment 2045	Numerical Employment Change	Percent Employment Change	2020 Basic Employment	2045 Basic Employment	2020 Retail Employment	2045 Retail Employment	2020 Service Employment	2045 Service Employment	2020 Government Employment	2045 Government Employment
51	60	53	(7)	-12%	4	6	-	-	56	47	-	-
52	35	38	3	9%	1	-	34	38	-	-	-	-
53	14	16	2	14%	-	-	4	11	10	5	-	-
54	384	487	103	27%	7	-	40	105	298	332	39	50
55	11	-	(11)	-100%	1	-	3	-	7	-	-	-
56	78	148	70	90%	-	-	-	-	78	148	-	-
57	577	949	372	64%	2	1	233	282	266	440	76	226
58	62	106	44	71%	1	-	2	2	59	104	-	-
59	495	533	38	8%	4	-	23	-	468	533	-	-
60	170	244	74	44%	24	52	-	-	146	192	-	-
61	12	20	8	67%	11	20	-	-	1	-	-	-
62	32	55	23	72%	10	-	-	-	22	55	-	-
63	31	41	10	32%	-	-	21	27	10	14	-	-
64	245	372	127	52%	-	-	-	-	245	372	-	-
65	321	301	(20)	-6%	-	-	101	58	220	243	-	-
66	34	30	(4)	-12%	-	-	8	-	26	30	-	-
67	11	4	(7)	-64%	-	-	-	-	11	4	-	-
68	10	22	12	120%	-	-	8	22	2	-	-	-
69	103	120	17	17%	4	-	15	17	49	103	35	-
70	6	-	(6)	-100%	-	-	-	-	6	-	-	-
71	176	277	101	57%	-	-	58	50	108	204	10	23
72	93	170	77	83%	-	-	12	16	81	154	-	-
73	2	3	1	50%	-	-	-	-	2	3	-	-
74	1,738	2,140	402	23%	1,513	1,932	20	12	205	196	-	-
75	45	63	18	40%	11	-	18	35	16	28	-	-
76	151	143	(8)	-5%	1	-	13	27	137	116	-	-
77	713	728	15	2%	3	-	56	50	654	678	-	-
78	75	116	41	55%	14	-	-	-	61	116	-	-
79	77	82	5	6%	-	-	37	73	36	-	4	9
80	55	67	12	22%	-	-	-	-	55	67	-	-
81	359	246	(113)	-31%	-	-	17	9	342	237	-	-
82	136	103	(33)	-24%	55	26	23	4	58	73	-	-
83	137	303	166	121%	5	-	-	-	122	280	10	23
84	307	273	(34)	-11%	-	-	204	187	103	86	-	-
85	56	102	46	82%	-	-	-	-	56	102	-	-
86	91	124	33	36%	1	-	-	-	90	124	-	-
87	7	2	(5)	-71%	6	-	-	-	1	2	-	-
88	29	14	(15)	-52%	18	14	-	-	11	-	-	-
89	167	232	65	39%	27	10	12	16	128	206	-	-
90	43	19	(24)	-56%	6	-	12	-	25	19	-	-
91	11	22	11	100%	2	6	7	9	2	7	-	-
92	306	607	301	98%	-	-	-	-	306	607	-	-
93	7	9	2	29%	1	-	-	-	6	9	-	-
94	310	251	(59)	-19%	73	143	10	1	227	107	-	-
95	118	145	27	23%	67	48	5	2	46	95	-	-
96	364	609	245	67%	19	48	32	11	313	550	-	-
97	288	271	(17)	-6%	19	16	182	139	87	116	-	-
98	770	761	(9)	-1%	87	104	37	7	646	650	-	-
99	810	354	(456)	-56%	7	-	238	182	565	172	-	-
100	404	575	171	42%	4	10	143	152	257	413	-	-

Table B.10: Summary Employment Variables by Transportation Analysis Zone, continued

TAZ	Total Employment 2020	Total Employment 2045	Numerical Employment Change	Percent Employment Change	2020 Basic Employment	2045 Basic Employment	2020 Retail Employment	2045 Retail Employment	2020 Service Employment	2045 Service Employment	2020 Government Employment	2045 Government Employment
101	213	188	(25)	-12%	-	-	159	92	44	83	10	13
102	13	35	22	169%	-	-	-	-	3	12	10	23
103	4	13	9	225%	2	6	-	-	2	7	-	-
104	2	6	4	200%	2	6	-	-	-	-	-	-
105	136	201	65	48%	16	43	72	127	48	31	-	-
106	262	381	119	45%	3	-	16	15	200	302	43	64
107	52	60	8	15%	8	15	10	13	34	32	-	-
108	906	1,650	744	82%	-	-	-	-	905	1,649	1	1
109	40	77	37	93%	-	-	-	-	40	77	-	-
110	1,348	1,388	40	3%	695	452	-	-	610	907	43	29
111	796	527	(269)	-34%	566	251	-	-	168	150	62	126
112	130	273	143	110%	-	-	-	-	130	273	-	-
113	552	687	135	24%	309	356	14	-	196	234	33	97
114	41	42	1	2%	7	10	32	32	2	-	-	-
115	48	18	(30)	-63%	3	7	4	5	41	6	-	-
116	38	77	39	103%	-	-	7	7	31	70	-	-
117	247	294	47	19%	8	15	5	-	234	279	-	-
118	83	130	47	57%	12	-	4	6	67	124	-	-
119	6	12	6	100%	-	-	2	6	4	6	-	-
120	9	5	(4)	-44%	4	5	5	-	-	-	-	-
121	270	263	(7)	-3%	3	-	29	52	228	183	10	28
122	-	-	-	n/a	-	-	-	-	-	-	-	-
123	97	218	121	125%	-	-	10	25	87	193	-	-
124	1,487	1,809	322	22%	3	7	11	-	1,471	1,796	2	6
125	9	18	9	100%	1	3	-	-	8	15	-	-
126	-	-	-	n/a	-	-	-	-	-	-	-	-
127	4	11	7	175%	-	-	4	11	-	-	-	-
128	366	466	100	27%	-	-	65	63	301	403	-	-
129	840	1,177	337	40%	-	-	334	367	506	810	-	-
130	1	-	(1)	-100%	-	-	-	-	1	-	-	-
131	13	19	6	46%	4	-	7	19	2	-	-	-
132	114	200	86	75%	22	33	15	18	77	149	-	-
133	6	17	11	183%	6	17	-	-	-	-	-	-
134	153	159	6	4%	1	-	12	10	140	149	-	-
135	1,040	1,404	364	35%	2	-	409	310	619	1,066	10	28
136	124	226	102	82%	14	3	8	12	102	211	-	-
137	2	-	(2)	-100%	-	-	-	-	2	-	-	-
138	144	373	229	159%	2	6	140	367	2	-	-	-
139	17	18	1	6%	12	18	-	-	5	-	-	-
140	1	2	1	100%	-	-	-	-	1	2	-	-
141	36	32	(4)	-11%	2	-	-	-	34	32	-	-
142	349	1,048	699	200%	4	-	32	39	313	1,009	-	-
143	394	586	192	49%	5	13	55	74	334	499	-	-
144	61	103	42	69%	6	-	-	-	55	103	-	-
145	3	2	(1)	-33%	-	-	-	-	3	2	-	-
146	84	94	10	12%	3	-	22	17	52	55	7	22
147	11	25	14	127%	-	-	-	-	11	25	-	-
148	38	-	(38)	-100%	3	-	-	-	35	-	-	-
149	115	226	111	97%	-	-	15	2	100	224	-	-
150	222	318	96	43%	1	-	15	-	206	318	-	-

Table B.10: Summary Employment Variables by Transportation Analysis Zone, continued

TAZ	Total Employment 2020	Total Employment 2045	Numerical Employment Change	Percent Employment Change	2020 Basic Employment	2045 Basic Employment	2020 Retail Employment	2045 Retail Employment	2020 Service Employment	2045 Service Employment	2020 Government Employment	2045 Government Employment
151	152	153	1	1%	4	8	19	13	129	132	-	-
152	195	296	101	52%	-	-	34	28	161	268	-	-
153	162	210	48	30%	14	11	1	3	147	196	-	-
154	27	56	29	107%	24	47	-	-	3	9	-	-
155	102	214	112	110%	15	-	-	-	87	214	-	-
156	43	41	(2)	-5%	40	37	2	2	1	2	-	-
157	21	50	29	138%	8	6	-	-	13	44	-	-
158	32	7	(25)	-78%	1	1	-	-	31	6	-	-
159	9	17	8	89%	4	-	-	-	5	17	-	-
160	53	168	115	217%	3	-	-	-	50	168	-	-
161	2	6	4	200%	-	-	-	-	2	6	-	-
162	3	-	(3)	-100%	-	-	-	-	3	-	-	-
163	-	-	-	n/a	-	-	-	-	-	-	-	-
164	4	11	7	175%	-	-	-	-	4	11	-	-
165	171	270	99	58%	12	15	4	11	155	244	-	-
166	37	51	14	38%	1	-	-	-	36	51	-	-
167	11	29	18	164%	11	29	-	-	-	-	-	-
168	9	3	(6)	-67%	4	-	-	-	5	3	-	-
169	19	18	(1)	-5%	11	3	-	-	8	15	-	-
170	33	52	19	58%	14	20	12	16	7	16	-	-
171	27	69	42	156%	7	12	-	-	20	57	-	-
172	1,834	2,808	974	53%	955	1,021	478	1,004	290	613	111	170
173	34	103	69	203%	3	7	-	-	31	96	-	-
174	47	69	22	47%	4	-	-	-	43	69	-	-
175	90	155	65	72%	3	6	51	57	36	92	-	-
176	7	8	1	14%	7	8	-	-	-	-	-	-
177	59	20	(39)	-66%	41	2	-	-	18	18	-	-
178	4	7	3	75%	2	-	-	-	2	7	-	-
179	280	319	39	14%	69	8	117	119	94	192	-	-
180	213	597	384	180%	163	433	-	-	48	164	2	-
181	395	1,000	605	153%	31	50	4	5	206	726	154	219
182	107	146	39	36%	30	2	-	-	77	144	-	-
183	639	707	68	11%	461	570	23	-	155	137	-	-
184	199	180	(19)	-10%	19	-	5	14	135	113	40	53
185	443	597	154	35%	261	272	38	39	144	286	-	-
186	12	-	(12)	-100%	-	-	-	-	12	-	-	-
187	192	209	17	9%	10	-	39	33	143	176	-	-
188	114	3	(111)	-97%	51	3	-	-	63	-	-	-
189	28	32	4	14%	8	4	-	-	20	28	-	-
190	62	62	-	0%	19	-	38	62	5	-	-	-
191	737	1,804	1,067	145%	556	1,172	4	11	177	621	-	-
192	77	53	(24)	-31%	5	-	-	-	72	53	-	-
193	170	140	(30)	-18%	71	45	8	8	91	87	-	-
194	52	56	4	8%	10	-	-	-	42	56	-	-
195	49	122	73	149%	48	122	-	-	1	-	-	-
196	105	74	(31)	-30%	13	19	15	39	77	16	-	-
197	57	144	87	153%	-	-	13	33	44	111	-	-
198	48	19	(29)	-60%	22	19	10	-	16	-	-	-
199	133	52	(81)	-61%	105	20	4	5	3	2	21	25
200	6	6	-	0%	2	-	-	-	4	6	-	-

Table B.10: Summary Employment Variables by Transportation Analysis Zone, continued

TAZ	Total Employment 2020	Total Employment 2045	Numerical Employment Change	Percent Employment Change	2020 Basic Employment	2045 Basic Employment	2020 Retail Employment	2045 Retail Employment	2020 Service Employment	2045 Service Employment	2020 Government Employment	2045 Government Employment
201	33	42	9	27%	-	-	1	3	32	39	-	-
202	191	325	134	70%	46	40	50	99	95	186	-	-
203	191	193	2	1%	38	6	1	3	15	38	137	146
204	481	596	115	24%	173	-	21	21	287	575	-	-
205	401	839	438	109%	91	201	25	4	285	634	-	-
206	69	105	36	52%	6	2	6	17	57	86	-	-
207	187	174	(13)	-7%	13	10	118	90	56	74	-	-
208	384	359	(25)	-7%	26	20	243	185	115	154	-	-
209	543	507	(36)	-7%	37	29	343	261	163	217	-	-
210	106	99	(7)	-7%	7	6	67	51	32	42	-	-
211	205	193	(12)	-6%	14	11	130	99	61	83	-	-
251	96	163	67	70%	5	13	8	3	83	147	-	-
252	74	112	38	51%	8	24	40	71	26	17	-	-
253	278	413	135	49%	32	89	148	260	98	64	-	-
254	227	331	104	46%	3	-	13	13	173	263	38	55
255	-	1	1	n/a	-	-	-	-	-	1	-	-
256	1	3	2	200%	-	-	-	-	1	3	-	-
257	912	938	26	3%	470	305	-	-	412	614	30	19
258	28	81	53	189%	22	59	-	-	6	22	-	-
259	46	128	82	178%	35	93	-	-	11	35	-	-
260	128	360	232	181%	98	261	-	-	29	99	1	-
261	174	435	261	150%	14	22	2	2	90	316	68	95
262	203	513	310	153%	16	26	2	2	106	372	79	113
263	46	117	71	154%	45	117	-	-	1	-	-	-
264	14	36	22	157%	14	36	-	-	-	-	-	-
265	11	27	16	145%	11	27	-	-	-	-	-	-
266	53	51	(2)	-4%	3	3	34	27	16	21	-	-
Total	57,851	83,600	25,749	45%	9,768	10,419	7,527	7,838	36,004	58,076	4,552	7,267

Table B.11: School Enrollment by Transportation Analysis Zone

TAZ	2020				2045			
	Elementary	Middle & Secondary	College	TOTAL	Elementary	Middle & Secondary	College	TOTAL
1	-	-	-	-	-	-	-	-
2	-	-	-	-	-	-	-	-
3	-	-	-	-	-	-	-	-
4	-	284	-	284	-	335	-	335
5	-	-	-	-	-	-	-	-
6	-	-	-	-	-	-	-	-
7	-	-	-	-	-	-	-	-
8	-	-	-	-	-	-	-	-
9	-	-	-	-	-	-	-	-
10	-	-	-	-	-	-	-	-
11	-	-	-	-	-	-	-	-
12	-	-	-	-	-	-	-	-
13	-	-	-	-	-	-	-	-
14	-	-	-	-	-	-	-	-
15	-	-	-	-	-	-	-	-
16	-	-	-	-	-	-	-	-
17	-	-	-	-	-	-	-	-
18	-	-	-	-	-	-	-	-
19	328	327	-	655	393	385	-	778
20	-	-	-	-	-	-	-	-
21	-	-	-	-	-	-	-	-
22	-	-	-	-	-	-	-	-
23	-	-	-	-	-	-	-	-
24	-	-	-	-	-	-	-	-
25	-	-	-	-	-	-	-	-
26	-	-	-	-	-	-	-	-
27	-	-	-	-	-	-	-	-
28	-	-	-	-	-	-	-	-
29	-	-	-	-	-	-	-	-
30	-	-	-	-	-	-	-	-
31	-	-	-	-	-	-	-	-
32	384	-	-	384	460	-	-	460
33	-	-	-	-	-	-	-	-
34	-	-	-	-	-	-	-	-
35	561	776	-	1,337	673	915	-	1,588
36	-	-	-	-	-	-	-	-
37	418	-	-	418	501	-	-	501
38	-	-	-	-	-	-	-	-
39	-	-	-	-	-	-	-	-
40	-	-	-	-	-	-	-	-
41	-	-	-	-	-	-	-	-
42	518	-	-	518	621	-	-	621
43	-	-	-	-	-	-	-	-
44	-	-	-	-	-	-	-	-
45	-	-	-	-	-	-	-	-
46	359	-	4,070	4,429	430	-	5,126	5,556
47	-	-	-	-	-	-	-	-
48	-	-	-	-	-	-	-	-
49	-	872	-	872	-	1,028	-	1,028
50	-	-	-	-	-	-	-	-

Table B.11: School Enrollment by Transportation Analysis Zone, continued

TAZ	2020				2045			
	Elementary	Middle & Secondary	College	TOTAL	Elementary	Middle & Secondary	College	TOTAL
51	469	-	-	469	562	-	-	562
52	-	-	-	-	-	-	-	-
53	-	-	-	-	-	-	-	-
54	-	-	-	-	-	-	-	-
55	-	-	-	-	-	-	-	-
56	412	-	-	412	494	-	-	494
57	-	1,324	-	1,324	-	1,562	-	1,562
58	592	-	-	592	710	-	-	710
59	-	-	-	-	-	-	-	-
60	487	-	-	487	584	-	-	584
61	-	-	-	-	-	-	-	-
62	-	-	-	-	-	-	-	-
63	-	-	-	-	-	-	-	-
64	-	1,081	-	1,081	-	1,275	-	1,275
65	-	-	-	-	-	-	-	-
66	-	-	-	-	-	-	-	-
67	-	-	-	-	-	-	-	-
68	-	-	-	-	-	-	-	-
69	-	-	-	-	-	-	-	-
70	-	-	-	-	-	-	-	-
71	-	390	-	390	-	460	-	460
72	506	-	-	506	607	-	-	607
73	-	-	-	-	-	-	-	-
74	-	-	-	-	-	-	-	-
75	-	-	-	-	-	-	-	-
76	477	-	-	477	572	-	-	572
77	-	-	-	-	-	-	-	-
78	473	-	-	473	567	-	-	567
79	-	-	-	-	-	-	-	-
80	-	-	-	-	-	-	-	-
81	470	-	-	470	564	-	-	564
82	-	-	-	-	-	-	-	-
83	-	-	-	-	-	-	-	-
84	-	-	-	-	-	-	-	-
85	579	-	-	579	694	-	-	694
86	-	372	-	372	-	438	-	438
87	-	-	-	-	-	-	-	-
88	-	-	-	-	-	-	-	-
89	751	-	-	751	901	-	-	901
90	-	-	-	-	-	-	-	-
91	-	-	-	-	-	-	-	-
92	-	-	-	-	-	-	-	-
93	-	-	-	-	-	-	-	-
94	-	1,177	-	1,177	-	1,388	-	1,388
95	-	-	-	-	-	-	-	-
96	-	-	-	-	-	-	-	-
97	-	-	-	-	-	-	-	-
98	-	-	-	-	-	-	-	-
99	-	-	-	-	-	-	-	-
100	-	-	-	-	-	-	-	-

Table B.11: School Enrollment by Transportation Analysis Zone, continued

TAZ	2020				2045			
	Elementary	Middle & Secondary	College	TOTAL	Elementary	Middle & Secondary	College	TOTAL
101	-	-	-	-	-	-	-	-
102	-	-	-	-	-	-	-	-
103	-	-	-	-	-	-	-	-
104	-	-	-	-	-	-	-	-
105	-	-	-	-	-	-	-	-
106	-	-	-	-	-	-	-	-
107	-	-	-	-	-	-	-	-
108	-	-	4,941	4,941	-	-	6,223	6,223
109	314	-	-	314	376	-	-	376
110	-	-	-	-	-	-	-	-
111	-	-	-	-	-	-	-	-
112	-	-	-	-	-	-	-	-
113	-	101	-	101	-	119	-	119
114	-	-	-	-	-	-	-	-
115	-	-	-	-	-	-	-	-
116	-	-	-	-	-	-	-	-
117	-	-	-	-	-	-	-	-
118	-	-	-	-	-	-	-	-
119	-	-	-	-	-	-	-	-
120	-	-	-	-	-	-	-	-
121	-	682	-	682	-	804	-	804
122	-	-	-	-	-	-	-	-
123	-	-	-	-	-	-	-	-
124	438	-	-	438	525	-	-	525
125	-	-	-	-	-	-	-	-
126	-	-	-	-	-	-	-	-
127	-	-	-	-	-	-	-	-
128	-	1,431	-	1,431	-	1,688	-	1,688
129	-	-	-	-	-	-	-	-
130	-	-	-	-	-	-	-	-
131	-	-	-	-	-	-	-	-
132	415	-	-	415	498	-	-	498
133	-	-	-	-	-	-	-	-
134	-	-	-	-	-	-	-	-
135	-	569	-	569	-	671	-	671
136	637	-	-	637	764	-	-	764
137	-	-	-	-	-	-	-	-
138	-	-	-	-	-	-	-	-
139	-	-	-	-	-	-	-	-
140	-	-	-	-	-	-	-	-
141	-	-	-	-	-	-	-	-
142	-	-	-	-	-	-	-	-
143	-	-	-	-	-	-	-	-
144	-	-	-	-	-	-	-	-
145	-	-	-	-	-	-	-	-
146	-	-	-	-	-	-	-	-
147	-	-	-	-	-	-	-	-
148	530	-	-	530	636	-	-	636
149	-	-	-	-	-	-	-	-
150	-	-	-	-	-	-	-	-

Table B.11: School Enrollment by Transportation Analysis Zone, continued

TAZ	2020				2045			
	Elementary	Middle & Secondary	College	TOTAL	Elementary	Middle & Secondary	College	TOTAL
151	-	-	-	-	-	-	-	-
152	351	155	-	506	421	182	-	603
153	363	522	-	885	435	615	-	1,050
154	-	-	-	-	-	-	-	-
155	-	-	-	-	-	-	-	-
156	-	-	-	-	-	-	-	-
157	-	-	-	-	-	-	-	-
158	409	-	-	409	490	-	-	490
159	-	-	-	-	-	-	-	-
160	-	-	-	-	-	-	-	-
161	-	-	-	-	-	-	-	-
162	-	-	-	-	-	-	-	-
163	-	-	-	-	-	-	-	-
164	-	-	-	-	-	-	-	-
165	-	2,073	-	2,073	-	2,446	-	2,446
166	516	-	-	516	619	-	-	619
167	-	-	-	-	-	-	-	-
168	-	-	-	-	-	-	-	-
169	-	-	-	-	-	-	-	-
170	-	-	-	-	-	-	-	-
171	-	-	-	-	-	-	-	-
172	-	-	-	-	-	-	-	-
173	-	-	-	-	-	-	-	-
174	559	-	-	559	670	-	-	670
175	-	-	-	-	-	-	-	-
176	-	-	-	-	-	-	-	-
177	-	-	-	-	-	-	-	-
178	-	-	-	-	-	-	-	-
179	-	-	-	-	-	-	-	-
180	-	-	-	-	-	-	-	-
181	-	-	-	-	-	-	-	-
182	-	-	-	-	-	-	-	-
183	-	-	-	-	-	-	-	-
184	383	-	-	383	459	-	-	459
185	-	-	-	-	-	-	-	-
186	-	-	-	-	-	-	-	-
187	422	-	-	422	506	-	-	506
188	432	-	-	432	518	-	-	518
189	-	-	-	-	-	-	-	-
190	-	-	-	-	-	-	-	-
191	-	-	-	-	-	-	-	-
192	301	296	-	597	361	349	-	710
193	-	893	-	893	-	1,053	-	1,053
194	237	-	-	237	284	-	-	284
195	-	-	-	-	-	-	-	-
196	358	181	-	539	429	213	-	642
197	-	-	-	-	-	-	-	-
198	-	-	-	-	-	-	-	-
199	-	-	-	-	-	-	-	-
200	-	-	-	-	-	-	-	-

Table B.11: School Enrollment by Transportation Analysis Zone, continued

TAZ	2020				2045			
	Elementary	Middle & Secondary	College	TOTAL	Elementary	Middle & Secondary	College	TOTAL
201	-	239	-	239	-	282	-	282
202	-	-	-	-	-	-	-	-
203	-	-	-	-	-	-	-	-
204	347	-	-	347	416	-	-	416
205	-	-	-	-	-	-	-	-
206	112	59	-	171	134	69	-	203
207	-	-	-	-	-	-	-	-
208	-	-	-	-	-	-	-	-
209	-	-	-	-	-	-	-	-
210	-	-	-	-	-	-	-	-
211	-	-	-	-	-	-	-	-
251	-	-	-	-	-	-	-	-
252	-	-	-	-	-	-	-	-
253	-	-	-	-	-	-	-	-
254	14	-	-	14	16	-	-	16
255	3	-	-	3	3	-	-	3
256	10	-	-	10	12	-	-	12
257	-	-	-	-	-	-	-	-
258	-	-	-	-	-	-	-	-
259	-	-	-	-	-	-	-	-
260	-	-	-	-	-	-	-	-
261	-	-	-	-	-	-	-	-
262	-	-	-	-	-	-	-	-
263	-	-	-	-	-	-	-	-
264	-	-	-	-	-	-	-	-
265	-	-	-	-	-	-	-	-
266	-	-	-	-	-	-	-	-
Total	14,935	13,804	9,011	37,750	17,905	16,277	11,349	45,531