

Contact Tracing Guide

The following is the general contact tracing approach that the Pueblo Department of Public Health and Environment (PDPHE) will take during the school year 2021-2022. This plan is intended to help PDPHE school partners with contact tracing and planning. Every exposure is unique and PDPHE will investigate every reported positive or probable case and may make exceptions for unusual situations. Refer to PDPHE Schools 2021-2022 protocols for explanation. Changes may occur as new information is released.

In every situation remember:



A fully vaccinated asymptomatic person does not have to quarantine. Getting vaccinated is the best way to avoid quarantines.



A quarantined asymptomatic person with a low-risk exposure will quarantine at home for 7 days. Test for COVID-19 on any day 5-7 days after last exposure. If the test result is negative, return on day 8. Without testing, they may return on day 11. They must remain asymptomatic and monitor for symptoms through day 14.



An exposed person with symptoms will need to be excluded and isolated at home for 10 days. Return to learn may be possible with a negative PCR test or alternate diagnosis by a licensed medical professional.



If both individuals were wearing a face covering appropriately and were more than 6 feet apart the contact can conduct a modified quarantine. Individuals should get COVID-19 5-7 days after exposure.



Unvaccinated household contacts must quarantine at home for the full 14 days if they cannot separate from the positive or symptomatic household member. Fully vaccinated asymptomatic household contacts do not have to quarantine at home.



Someone confirmed to have COVID-19 with a PCR test in the last 90 days does not have to quarantine at home, as long as they don't develop symptoms after an exposure, continue to wear a face mask, monitor for symptoms for the entire 14-day period, and test for COVID-19 5-7 days after exposure.



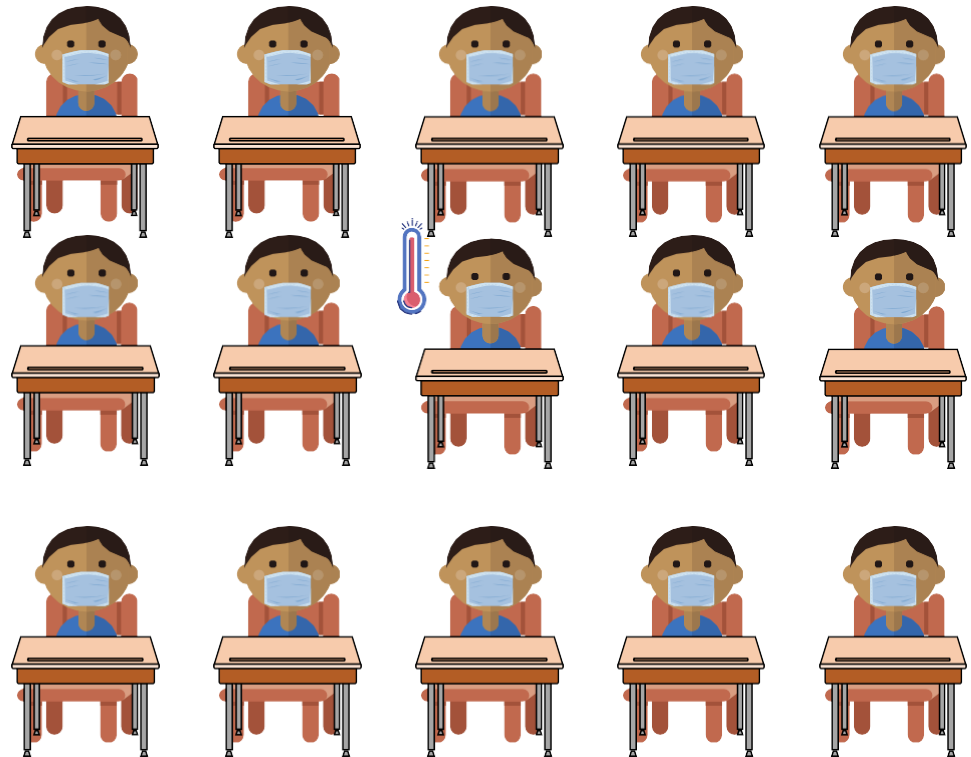
If targeted contact tracing cannot be conducted or contacts cannot be determined, all potential contacts will be quarantined.



If there is evidence of substantial transmission in a facility (5 unrelated positive or probable cases in a classroom, group, cohort, or 5% in a school building), the area should close for the duration of the quarantine period. Reach out to Public Health for guidance.

Routine Classroom Exposures Grades 1-12

- Occurs strictly in a traditional school classroom setting
- Students are primarily seated
- Not engaging in any high-risk activities (such as singing or physical education)
- Seating charts or cohorting must be kept and layered mitigation followed

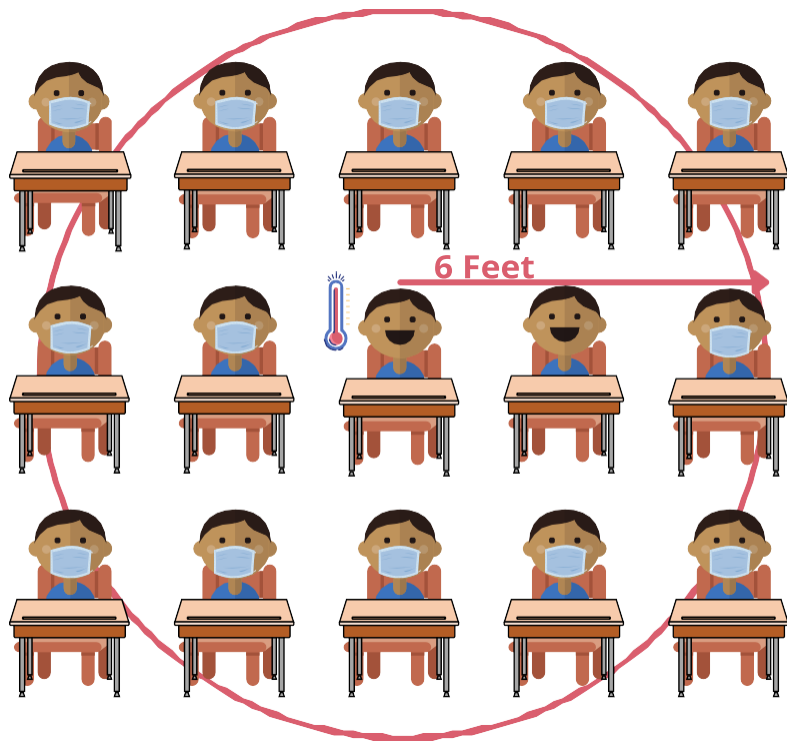


All students masked:

- Ill student should be excluded and self-isolate at home.
- Modified quarantine for symptom watch allowed as long as everyone monitors for symptoms daily.
- School and Public Health Notice issued to the classroom.

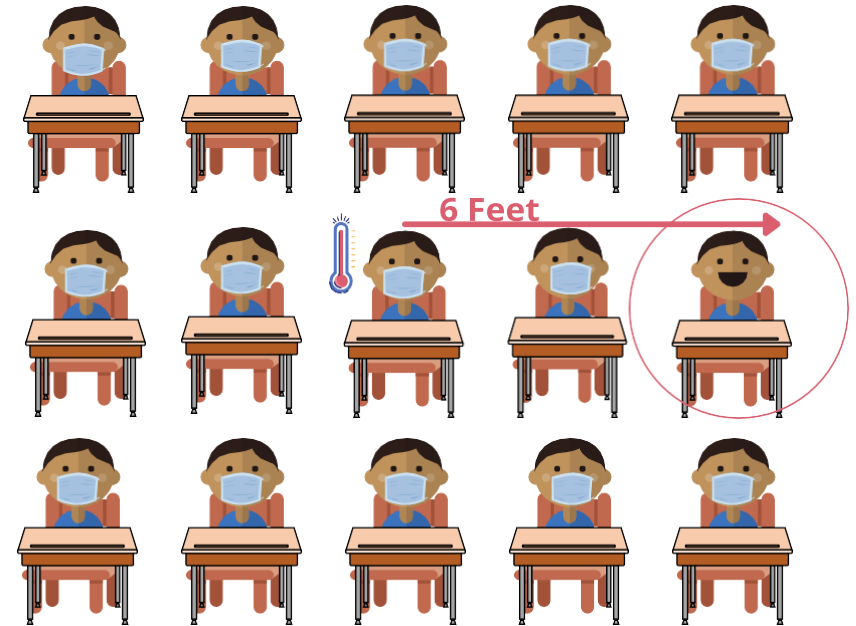
Routine Classroom Exposures Grades 1-12

Unmasked individuals may result in larger numbers of quarantined students.



Ill student unmasked:

- ◆ Ill student should be excluded and self-isolate at home
- ◆ Unvaccinated contacts within 6 feet quarantined (masked or unmasked)
- ◆ School and Public Health Notice issued to classroom



Contact unmasked:

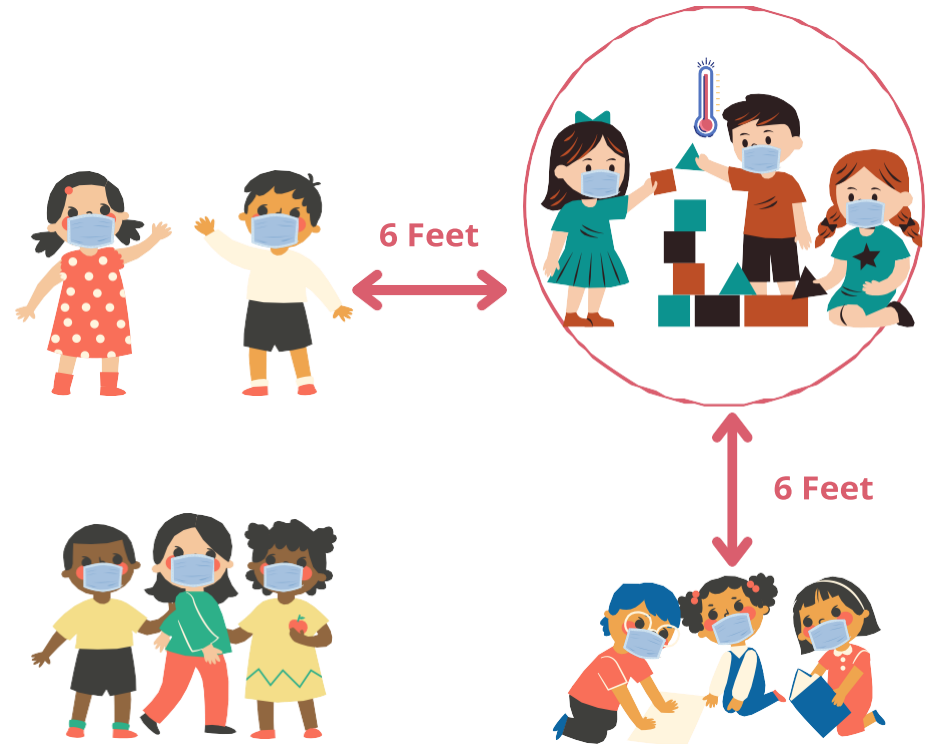
- ◆ Ill student should be excluded and self-isolate at home
- ◆ No at-home quarantines except for unmasked and unvaccinated contacts within 6 feet
- ◆ School and Public Health Notice issued to classroom

Kindergarten, Pre-K, or Childcare Classrooms with Movement



Pre-K, Childcare, or Older Students with Movement but Contact Cannot be Determined

- ◆ Anyone in the entire cohort who is unvaccinated/partially vaccinated is quarantined for 10 days at home and can return to class on days 11-14 if they remain asymptomatic.
- ◆ Contact the PDPHE school liaison for guidance.
- ◆ School and Public Health Notice issued to the classroom



Kindergarten or Older Students with Movement and Subcohort in Group

- ◆ Anyone in the entire subcohort who is unvaccinated is quarantined.
- ◆ All others will monitor symptoms.
- ◆ School and Public Health Notice issued to the classroom.