



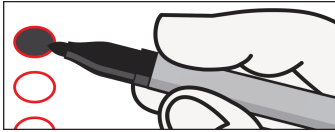
**Official Primary Election Ballot for Democratic Party**  
**Pueblo County, Colorado**  
**Tuesday, June 28, 2022**

Ballot Type: DC46

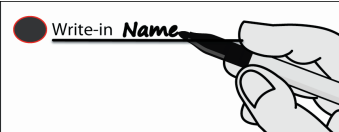
Clerk and Recorder



**Return only one ballot.** If your mail ballot packet contains ballots for both the Democratic and Republican Parties, mark and return only one ballot, and destroy the other. If you mark and return both party ballots, neither will count.



To vote for a named candidate, completely fill in the oval to the left of your choice. Use blue or black ink.



To vote for an eligible write-in candidate, completely fill in the oval to the left of the write-in line, and print the name of the candidate on the line. If a race does not contain a write-in line, you cannot vote for a write-in candidate.



To make a correction in a race with more than one candidate, draw a bold line through the oval and candidate name marked by mistake, then fill in the oval next to the correct name. If you voted for the only candidate in a race and want to withdraw that vote, you must request a replacement ballot.

**WARNING:** Any person who, by use of force or other means, unduly influences an eligible elector to vote in any particular manner or to refrain from voting, or who falsely makes, alters, forges or counterfeits any mail ballot before or after it has been cast, or who destroys, defaces, mutilates, or tampers with a ballot is subject, upon conviction, to imprisonment, or to a fine, or both. Section 1-7.5-107(3)(b), C.R.S.

Federal Offices	State Offices
<b>United States Senator</b> (Vote for One) <input type="radio"/> Michael Bennet	<b>Attorney General</b> (Vote for One) <input type="radio"/> Phil Weiser
<b>Representative to the 118th United States Congress - District 3</b> (Vote for One) <input type="radio"/> Soledad Sandoval Tafoya <input type="radio"/> Alex Walker <input type="radio"/> Adam Frisch	<b>State Board of Education Member - At Large</b> (Vote for One) <input type="radio"/> Kathy Plomer
<b>State Offices</b>	<b>State Senator - District 3</b> (Vote for One) <input type="radio"/> Nick Hinrichsen
<b>Governor</b> (Vote for One) <input type="radio"/> Jared Polis	<b>State Representative - District 46</b> (Vote for One) <input type="radio"/> Tisha Lyn Mauro <input type="radio"/> Jason A. Muñoz
<b>Secretary of State</b> (Vote for One) <input type="radio"/> Jena Griswold	
<b>State Treasurer</b> (Vote for One) <input type="radio"/> Dave Young	

Mark both sides of the ballot

+

**County Offices**

**County Commissioner - District 3**

(Vote for One)

- Roxy Pignanelli
- Michael Schuster

**County Clerk and Recorder**

(Vote for One)

- Gilbert "Bo" Ortiz
- Candace Rivera

**County Treasurer**

(Vote for One)

- Del Olivas
- Kim Archuletta

**County Assessor**

(Vote for One)

- Frank R. Beltran

**County Sheriff**

(Vote for One)

- David J. Lucero

**County Surveyor**

(Vote for One)

- Randy Reeves

**County Coroner**

(Vote for One)

- Zolanye McCulley-Bachicha

SAMPLE

Mark both sides of the ballot 





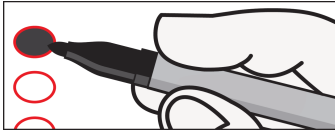
**Official Primary Election Ballot for Democratic Party**  
**Pueblo County, Colorado**  
**Tuesday, June 28, 2022**

Ballot Type: DC47

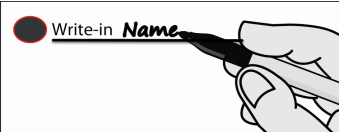
Clerk and Recorder



**Return only one ballot.** If your mail ballot packet contains ballots for both the Democratic and Republican Parties, mark and return only one ballot, and destroy the other. If you mark and return both party ballots, neither will count.



To vote for a named candidate, completely fill in the oval to the left of your choice. Use blue or black ink.



To vote for an eligible write-in candidate, completely fill in the oval to the left of the write-in line, and print the name of the candidate on the line. If a race does not contain a write-in line, you cannot vote for a write-in candidate.



To make a correction in a race with more than one candidate, draw a bold line through the oval and candidate name marked by mistake, then fill in the oval next to the correct name. If you voted for the only candidate in a race and want to withdraw that vote, you must request a replacement ballot.

**WARNING:** Any person who, by use of force or other means, unduly influences an eligible elector to vote in any particular manner or to refrain from voting, or who falsely makes, alters, forges or counterfeits any mail ballot before or after it has been cast, or who destroys, defaces, mutilates, or tampers with a ballot is subject, upon conviction, to imprisonment, or to a fine, or both. Section 1-7.5-107(3)(b), C.R.S.

Federal Offices	State Offices
<b>United States Senator</b> (Vote for One) <input type="radio"/> Michael Bennet	<b>Attorney General</b> (Vote for One) <input type="radio"/> Phil Weiser
<b>Representative to the 118th United States Congress - District 3</b> (Vote for One) <input type="radio"/> Soledad Sandoval Tafoya <input type="radio"/> Alex Walker <input type="radio"/> Adam Frisch	<b>State Board of Education Member - At Large</b> (Vote for One) <input type="radio"/> Kathy Plomer
<b>State Offices</b>	<b>State Senator - District 3</b> (Vote for One) <input type="radio"/> Nick Hinrichsen
<b>Governor</b> (Vote for One) <input type="radio"/> Jared Polis	<b>State Representative - District 47</b> (Vote for One) <input type="radio"/> Edwin Dean Ormiston
<b>Secretary of State</b> (Vote for One) <input type="radio"/> Jena Griswold	
<b>State Treasurer</b> (Vote for One) <input type="radio"/> Dave Young	

Mark both sides of the ballot

+

**County Offices**

**County Commissioner - District 3**

(Vote for One)

- Roxy Pignanelli
- Michael Schuster

**County Clerk and Recorder**

(Vote for One)

- Gilbert "Bo" Ortiz
- Candace Rivera

**County Treasurer**

(Vote for One)

- Del Olivas
- Kim Archuletta

**County Assessor**

(Vote for One)

- Frank R. Beltran

**County Sheriff**

(Vote for One)

- David J. Lucero

**County Surveyor**

(Vote for One)

- Randy Reeves

**County Coroner**

(Vote for One)

- Zolanye McCulley-Bachicha

SAMPLE

Mark both sides of the ballot 

1011





**Official Primary Election Ballot for Democratic Party**  
**Pueblo County, Colorado**  
**Tuesday, June 28, 2022**

Ballot Type: DC60

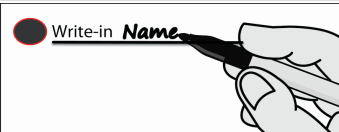
Clerk and Recorder



**Return only one ballot.** If your mail ballot packet contains ballots for both the Democratic and Republican Parties, mark and return only one ballot, and destroy the other. If you mark and return both party ballots, neither will count.



To vote for a named candidate, completely fill in the oval to the left of your choice. Use blue or black ink.



To vote for an eligible write-in candidate, completely fill in the oval to the left of the write-in line, and print the name of the candidate on the line. If a race does not contain a write-in line, you cannot vote for a write-in candidate.



To make a correction in a race with more than one candidate, draw a bold line through the oval and candidate name marked by mistake, then fill in the oval next to the correct name. If you voted for the only candidate in a race and want to withdraw that vote, you must request a replacement ballot.

**WARNING:** Any person who, by use of force or other means, unduly influences an eligible elector to vote in any particular manner or to refrain from voting, or who falsely makes, alters, forges or counterfeits any mail ballot before or after it has been cast, or who destroys, defaces, mutilates, or tampers with a ballot is subject, upon conviction, to imprisonment, or to a fine, or both. Section 1-7.5-107(3)(b), C.R.S.

Federal Offices	State Offices
<b>United States Senator</b> (Vote for One) <input type="radio"/> Michael Bennet	<b>Attorney General</b> (Vote for One) <input type="radio"/> Phil Weiser
<b>Representative to the 118th United States Congress - District 3</b> (Vote for One) <input type="radio"/> Soledad Sandoval Tafoya <input type="radio"/> Alex Walker <input type="radio"/> Adam Frisch	<b>State Board of Education Member - At Large</b> (Vote for One) <input type="radio"/> Kathy Plomer
<b>State Offices</b>	<b>State Senator - District 3</b> (Vote for One) <input type="radio"/> Nick Hinrichsen
<b>Governor</b> (Vote for One) <input type="radio"/> Jared Polis	<b>State Representative - District 60</b> (Vote for One) <input type="radio"/> Kathryn Green
<b>Secretary of State</b> (Vote for One) <input type="radio"/> Jena Griswold	
<b>State Treasurer</b> (Vote for One) <input type="radio"/> Dave Young	

Mark both sides of the ballot

+

**County Offices**

**County Commissioner - District 3**

(Vote for One)

- Roxy Pignanelli
- Michael Schuster

**County Clerk and Recorder**

(Vote for One)

- Gilbert "Bo" Ortiz
- Candace Rivera

**County Treasurer**

(Vote for One)

- Del Olivas
- Kim Archuletta

**County Assessor**

(Vote for One)

- Frank R. Beltran

**County Sheriff**

(Vote for One)

- David J. Lucero

**County Surveyor**

(Vote for One)

- Randy Reeves

**County Coroner**

(Vote for One)

- Zolanye McCulley-Bachicha





**Official Primary Election Ballot for Republican Party**  
**Pueblo County, Colorado**  
**Tuesday, June 28, 2022**

Ballot Type: RC46

Clerk and Recorder



**Return only one ballot.** If your mail ballot packet contains ballots for both the Democratic and Republican Parties, mark and return only one ballot, and destroy the other. If you mark and return both party ballots, neither will count.



To vote for a named candidate, completely fill in the oval to the left of your choice. Use blue or black ink.



To vote for an eligible write-in candidate, completely fill in the oval to the left of the write-in line, and print the name of the candidate on the line. If a race does not contain a write-in line, you cannot vote for a write-in candidate.



To make a correction in a race with more than one candidate, draw a bold line through the oval and candidate name marked by mistake, then fill in the oval next to the correct name. If you voted for the only candidate in a race and want to withdraw that vote, you must request a replacement ballot.

**WARNING:** Any person who, by use of force or other means, unduly influences an eligible elector to vote in any particular manner or to refrain from voting, or who falsely makes, alters, forges or counterfeits any mail ballot before or after it has been cast, or who destroys, defaces, mutilates, or tampers with a ballot is subject, upon conviction, to imprisonment, or to a fine, or both. Section 1-7.5-107(3)(b), C.R.S.

Federal Offices	State Offices
<p><b>United States Senator</b> (Vote for One)</p> <p><input type="radio"/> Ron Hanks</p> <p><input type="radio"/> Joe O'Dea</p> <p><input type="radio"/> Write-in</p>	<p><b>Secretary of State</b> (Vote for One)</p> <p><input type="radio"/> Tina Peters</p> <p><input type="radio"/> Mike O'Donnell</p> <p><input type="radio"/> Pam Anderson</p>
<p><b>Representative to the 118th United States Congress - District 3</b> (Vote for One)</p> <p><input type="radio"/> Lauren Boebert</p> <p><input type="radio"/> Don Coram</p>	<p><b>State Treasurer</b> (Vote for One)</p> <p><input type="radio"/> Lang Sias</p>
<p><b>State Offices</b></p> <p><b>Governor</b> (Vote for One)</p> <p><input type="radio"/> Greg Lopez</p> <p><input type="radio"/> Heidi Ganahl</p>	<p><b>Attorney General</b> (Vote for One)</p> <p><input type="radio"/> John Kellner</p>
	<p><b>State Board of Education Member - At Large</b> (Vote for One)</p> <p><input type="radio"/> Dan Maloit</p>
	<p><b>State Senator - District 3</b> (Vote for One)</p> <p><input type="radio"/> Stephen A. Varela</p>

Mark both sides of the ballot

+

<b>State Offices</b>
<b>State Representative - District 46</b> (Vote for One)
<input type="radio"/> Jonathan Ambler
<b>County Offices</b>
<b>County Commissioner - District 3</b> (Vote for One)
<input type="radio"/> Zach Swearingen
<b>County Clerk and Recorder</b> (Vote for One)
<input type="radio"/> Nathan Baxter <input type="radio"/> Sarina Adame
<b>County Treasurer</b> (Vote for One)
<input type="radio"/> Michelle M. Gray
<b>County Assessor</b> (Vote for One)
<input type="radio"/> J. Angel Lewis
<b>County Sheriff</b> (Vote for One)
<input type="radio"/> Joey Musso
<b>County Surveyor</b> (Vote for One)
There are no candidates for this office.
<b>County Coroner</b> (Vote for One)
<input type="radio"/> Brian Cotter

Mark both sides of the ballot 

10/10







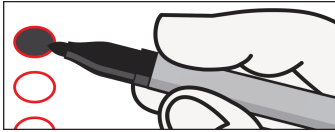
**Official Primary Election Ballot for Democratic Party**  
**Pueblo County, Colorado**  
**Tuesday, June 28, 2022**

Ballot Type: DC62

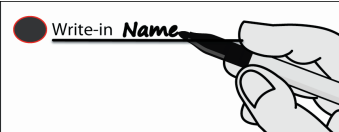
Clerk and Recorder



**Return only one ballot.** If your mail ballot packet contains ballots for both the Democratic and Republican Parties, mark and return only one ballot, and destroy the other. If you mark and return both party ballots, neither will count.



To vote for a named candidate, completely fill in the oval to the left of your choice. Use blue or black ink.



To vote for an eligible write-in candidate, completely fill in the oval to the left of the write-in line, and print the name of the candidate on the line. If a race does not contain a write-in line, you cannot vote for a write-in candidate.



To make a correction in a race with more than one candidate, draw a bold line through the oval and candidate name marked by mistake, then fill in the oval next to the correct name. If you voted for the only candidate in a race and want to withdraw that vote, you must request a replacement ballot.

**WARNING:** Any person who, by use of force or other means, unduly influences an eligible elector to vote in any particular manner or to refrain from voting, or who falsely makes, alters, forges or counterfeits any mail ballot before or after it has been cast, or who destroys, defaces, mutilates, or tampers with a ballot is subject, upon conviction, to imprisonment, or to a fine, or both. Section 1-7.5-107(3)(b), C.R.S.

Federal Offices	State Offices
<b>United States Senator</b> (Vote for One) <input type="radio"/> Michael Bennet	<b>Attorney General</b> (Vote for One) <input type="radio"/> Phil Weiser
<b>Representative to the 118th United States Congress - District 3</b> (Vote for One) <input type="radio"/> Soledad Sandoval Tafoya <input type="radio"/> Alex Walker <input type="radio"/> Adam Frisch	<b>State Board of Education Member - At Large</b> (Vote for One) <input type="radio"/> Kathy Plomer
<b>State Offices</b>	<b>State Senator - District 3</b> (Vote for One) <input type="radio"/> Nick Hinrichsen
<b>Governor</b> (Vote for One) <input type="radio"/> Jared Polis	<b>State Representative - District 62</b> (Vote for One) <input type="radio"/> Matthew Martinez
<b>Secretary of State</b> (Vote for One) <input type="radio"/> Jena Griswold	
<b>State Treasurer</b> (Vote for One) <input type="radio"/> Dave Young	

Mark both sides of the ballot

+

**County Offices**

**County Commissioner - District 3**

(Vote for One)

- Roxy Pignanelli
- Michael Schuster

**County Clerk and Recorder**

(Vote for One)

- Gilbert "Bo" Ortiz
- Candace Rivera

**County Treasurer**

(Vote for One)

- Del Olivas
- Kim Archuletta

**County Assessor**

(Vote for One)

- Frank R. Beltran

**County Sheriff**

(Vote for One)

- David J. Lucero

**County Surveyor**

(Vote for One)

- Randy Reeves

**County Coroner**

(Vote for One)

- Zolanye McCulley-Bachicha

Mark both sides of the ballot 





**Official Primary Election Ballot for Republican Party**  
**Pueblo County, Colorado**  
**Tuesday, June 28, 2022**

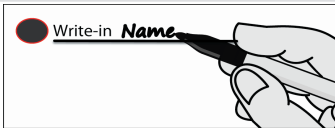
Ballot Type: RC47

Clerk and Recorder

**!** **Return only one ballot.** If your mail ballot packet contains ballots for both the Democratic and Republican Parties, mark and return only one ballot, and destroy the other. If you mark and return both party ballots, neither will count.



To vote for a named candidate, completely fill in the oval to the left of your choice. Use blue or black ink.



To vote for an eligible write-in candidate, completely fill in the oval to the left of the write-in line, and print the name of the candidate on the line. If a race does not contain a write-in line, you cannot vote for a write-in candidate.



To make a correction in a race with more than one candidate, draw a bold line through the oval and candidate name marked by mistake, then fill in the oval next to the correct name. If you voted for the only candidate in a race and want to withdraw that vote, you must request a replacement ballot.

**WARNING:** Any person who, by use of force or other means, unduly influences an eligible elector to vote in any particular manner or to refrain from voting, or who falsely makes, alters, forges or counterfeits any mail ballot before or after it has been cast, or who destroys, defaces, mutilates, or tampers with a ballot is subject, upon conviction, to imprisonment, or to a fine, or both. Section 1-7.5-107(3)(b), C.R.S.

Federal Offices	State Offices
<p><b>United States Senator</b> (Vote for One)</p> <p><input type="radio"/> Ron Hanks</p> <p><input type="radio"/> Joe O'Dea</p> <p><input type="radio"/> Write-in</p>	<p><b>Secretary of State</b> (Vote for One)</p> <p><input type="radio"/> Tina Peters</p> <p><input type="radio"/> Mike O'Donnell</p> <p><input type="radio"/> Pam Anderson</p>
<p><b>Representative to the 118th United States Congress - District 3</b> (Vote for One)</p> <p><input type="radio"/> Lauren Boebert</p> <p><input type="radio"/> Don Coram</p>	<p><b>State Treasurer</b> (Vote for One)</p> <p><input type="radio"/> Lang Sias</p>
<p><b>State Offices</b></p> <p><b>Governor</b> (Vote for One)</p> <p><input type="radio"/> Greg Lopez</p> <p><input type="radio"/> Heidi Ganahl</p>	<p><b>Attorney General</b> (Vote for One)</p> <p><input type="radio"/> John Kellner</p>
	<p><b>State Board of Education Member - At Large</b> (Vote for One)</p> <p><input type="radio"/> Dan Maloit</p>
	<p><b>State Senator - District 3</b> (Vote for One)</p> <p><input type="radio"/> Stephen A. Varela</p>

**Mark both sides of the ballot**

+

<b>State Offices</b>
<b>State Representative - District 47</b> (Vote for One)
<input type="radio"/> Ty Winter
<b>County Offices</b>
<b>County Commissioner - District 3</b> (Vote for One)
<input type="radio"/> Zach Swearingen
<b>County Clerk and Recorder</b> (Vote for One)
<input type="radio"/> Nathan Baxter
<input type="radio"/> Sarina Adame
<b>County Treasurer</b> (Vote for One)
<input type="radio"/> Michelle M. Gray
<b>County Assessor</b> (Vote for One)
<input type="radio"/> J. Angel Lewis
<b>County Sheriff</b> (Vote for One)
<input type="radio"/> Joey Musso
<b>County Surveyor</b> (Vote for One)
There are no candidates for this office.
<b>County Coroner</b> (Vote for One)
<input type="radio"/> Brian Cotter

Mark both sides of the ballot 





**Official Primary Election Ballot for Republican Party**  
**Pueblo County, Colorado**  
**Tuesday, June 28, 2022**

Ballot Type: RC60

Clerk and Recorder

**!** **Return only one ballot.** If your mail ballot packet contains ballots for both the Democratic and Republican Parties, mark and return only one ballot, and destroy the other. If you mark and return both party ballots, neither will count.



To vote for a named candidate, completely fill in the oval to the left of your choice. Use blue or black ink.



To vote for an eligible write-in candidate, completely fill in the oval to the left of the write-in line, and print the name of the candidate on the line. If a race does not contain a write-in line, you cannot vote for a write-in candidate.



To make a correction in a race with more than one candidate, draw a bold line through the oval and candidate name marked by mistake, then fill in the oval next to the correct name. If you voted for the only candidate in a race and want to withdraw that vote, you must request a replacement ballot.

**WARNING:** Any person who, by use of force or other means, unduly influences an eligible elector to vote in any particular manner or to refrain from voting, or who falsely makes, alters, forges or counterfeits any mail ballot before or after it has been cast, or who destroys, defaces, mutilates, or tampers with a ballot is subject, upon conviction, to imprisonment, or to a fine, or both. Section 1-7.5-107(3)(b), C.R.S.

Federal Offices	State Offices
<p><b>United States Senator</b> (Vote for One)</p> <p><input type="radio"/> Ron Hanks</p> <p><input type="radio"/> Joe O'Dea</p> <p><input type="radio"/> Write-in</p>	<p><b>Secretary of State</b> (Vote for One)</p> <p><input type="radio"/> Tina Peters</p> <p><input type="radio"/> Mike O'Donnell</p> <p><input type="radio"/> Pam Anderson</p>
<p><b>Representative to the 118th United States Congress - District 3</b> (Vote for One)</p> <p><input type="radio"/> Lauren Boebert</p> <p><input type="radio"/> Don Coram</p>	<p><b>State Treasurer</b> (Vote for One)</p> <p><input type="radio"/> Lang Sias</p>
<p><b>State Offices</b></p> <p><b>Governor</b> (Vote for One)</p> <p><input type="radio"/> Greg Lopez</p> <p><input type="radio"/> Heidi Ganahl</p>	<p><b>Attorney General</b> (Vote for One)</p> <p><input type="radio"/> John Kellner</p>
	<p><b>State Board of Education Member - At Large</b> (Vote for One)</p> <p><input type="radio"/> Dan Maloit</p>
	<p><b>State Senator - District 3</b> (Vote for One)</p> <p><input type="radio"/> Stephen A. Varela</p>

Mark both sides of the ballot

+

<b>State Offices</b>
<b>State Representative - District 60</b> (Vote for One)
<input type="radio"/> Stephanie Luck
<b>County Offices</b>
<b>County Commissioner - District 3</b> (Vote for One)
<input type="radio"/> Zach Swearingen
<b>County Clerk and Recorder</b> (Vote for One)
<input type="radio"/> Nathan Baxter
<input type="radio"/> Sarina Adame
<b>County Treasurer</b> (Vote for One)
<input type="radio"/> Michelle M. Gray
<b>County Assessor</b> (Vote for One)
<input type="radio"/> J. Angel Lewis
<b>County Sheriff</b> (Vote for One)
<input type="radio"/> Joey Musso
<b>County Surveyor</b> (Vote for One)
There are no candidates for this office.
<b>County Coroner</b> (Vote for One)
<input type="radio"/> Brian Cotter

Mark both sides of the ballot 





**Official Primary Election Ballot for Republican Party**  
**Pueblo County, Colorado**  
**Tuesday, June 28, 2022**

Ballot Type: RC62

Clerk and Recorder



**Return only one ballot.** If your mail ballot packet contains ballots for both the Democratic and Republican Parties, mark and return only one ballot, and destroy the other. If you mark and return both party ballots, neither will count.



To vote for a named candidate, completely fill in the oval to the left of your choice. Use blue or black ink.



To vote for an eligible write-in candidate, completely fill in the oval to the left of the write-in line, and print the name of the candidate on the line. If a race does not contain a write-in line, you cannot vote for a write-in candidate.



To make a correction in a race with more than one candidate, draw a bold line through the oval and candidate name marked by mistake, then fill in the oval next to the correct name. If you voted for the only candidate in a race and want to withdraw that vote, you must request a replacement ballot.

**WARNING:** Any person who, by use of force or other means, unduly influences an eligible elector to vote in any particular manner or to refrain from voting, or who falsely makes, alters, forges or counterfeits any mail ballot before or after it has been cast, or who destroys, defaces, mutilates, or tampers with a ballot is subject, upon conviction, to imprisonment, or to a fine, or both. Section 1-7.5-107(3)(b), C.R.S.

Federal Offices	State Offices
<p><b>United States Senator</b> (Vote for One)</p> <p><input type="radio"/> Ron Hanks</p> <p><input type="radio"/> Joe O'Dea</p> <p><input type="radio"/> Write-in</p>	<p><b>Secretary of State</b> (Vote for One)</p> <p><input type="radio"/> Tina Peters</p> <p><input type="radio"/> Mike O'Donnell</p> <p><input type="radio"/> Pam Anderson</p>
<p><b>Representative to the 118th United States Congress - District 3</b> (Vote for One)</p> <p><input type="radio"/> Lauren Boebert</p> <p><input type="radio"/> Don Coram</p>	<p><b>State Treasurer</b> (Vote for One)</p> <p><input type="radio"/> Lang Sias</p>
<p><b>State Offices</b></p> <p><b>Governor</b> (Vote for One)</p> <p><input type="radio"/> Greg Lopez</p> <p><input type="radio"/> Heidi Ganahl</p>	<p><b>Attorney General</b> (Vote for One)</p> <p><input type="radio"/> John Kellner</p>
	<p><b>State Board of Education Member - At Large</b> (Vote for One)</p> <p><input type="radio"/> Dan Maloic</p>
	<p><b>State Senator - District 3</b> (Vote for One)</p> <p><input type="radio"/> Stephen A. Varela</p>

Mark both sides of the ballot

+

<b>State Offices</b>
<b>State Representative - District 62</b> (Vote for One)
<input type="radio"/> Ryan G. Williams
<input type="radio"/> Carol Riggerbach
<b>County Offices</b>
<b>County Commissioner - District 3</b> (Vote for One)
<input type="radio"/> Zach Swearingen
<b>County Clerk and Recorder</b> (Vote for One)
<input type="radio"/> Nathan Baxter
<input type="radio"/> Sarina Adame
<b>County Treasurer</b> (Vote for One)
<input type="radio"/> Michelle M. Gray
<b>County Assessor</b> (Vote for One)
<input type="radio"/> J. Angel Lewis
<b>County Sheriff</b> (Vote for One)
<input type="radio"/> Joey Musso
<b>County Surveyor</b> (Vote for One)
There are no candidates for this office.
<b>County Coroner</b> (Vote for One)
<input type="radio"/> Brian Cotter

SAMPLE

Mark both sides of the ballot 

