

# PUEBLO'S Comprehensive Plan

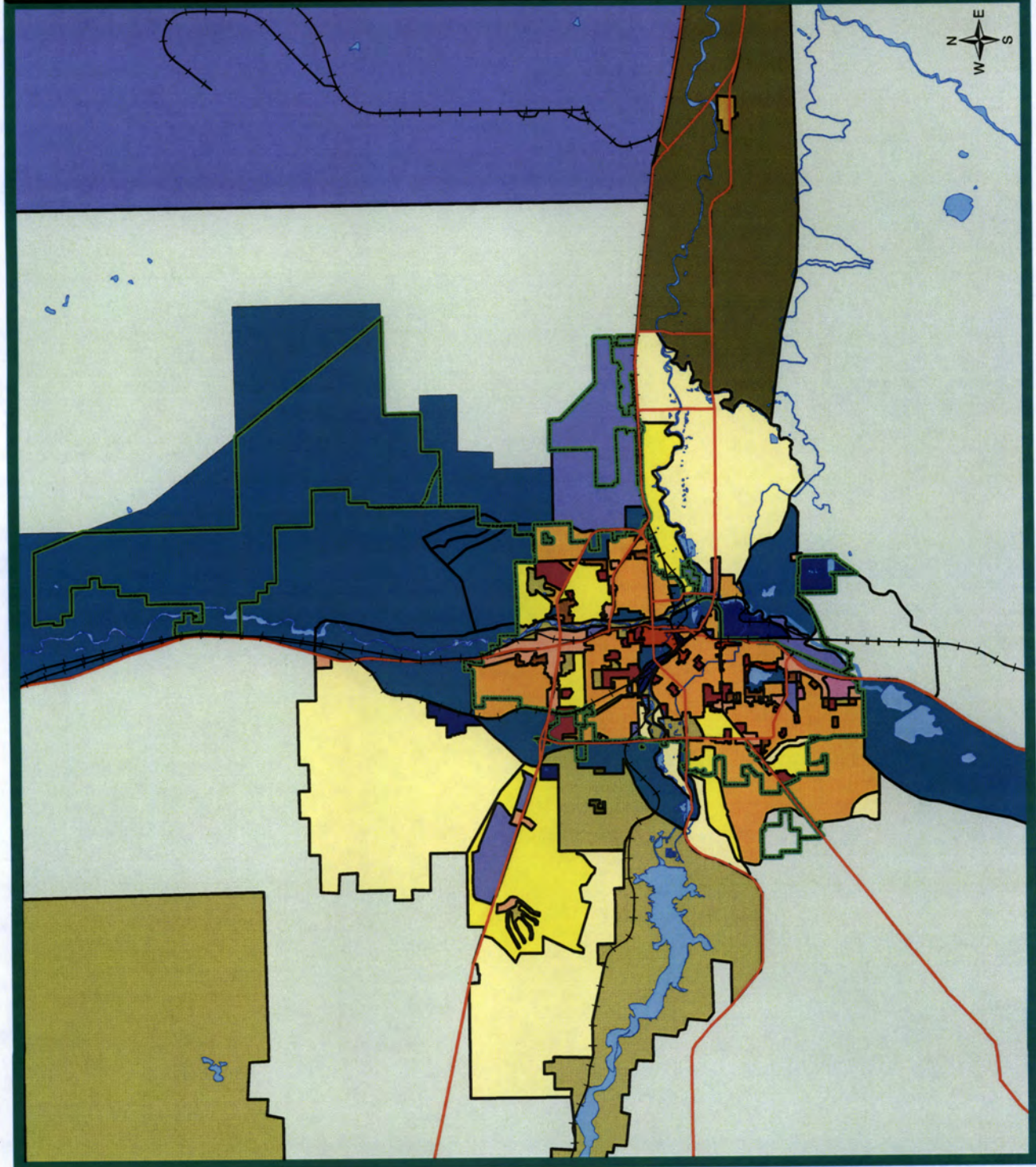
Effective October 22, 2007

## Future Land Use

- Arterial Commercial Mixed Use
- Country Residential
- Country Village
- Employment Center - Industry
- Employment Center - Light Industry Mixed
- Employment Center - Office Park
- High Density Residential
- Institutional Mixed Use
- Large Parks, Open Space, & River Corridors
- Production Agriculture
- Rural Ranch
- Special Development Area
- Suburban Residential
- Urban Mixed Use
- Urban Residential

Created by City of Pueblo, GIS  
July 1, 2008

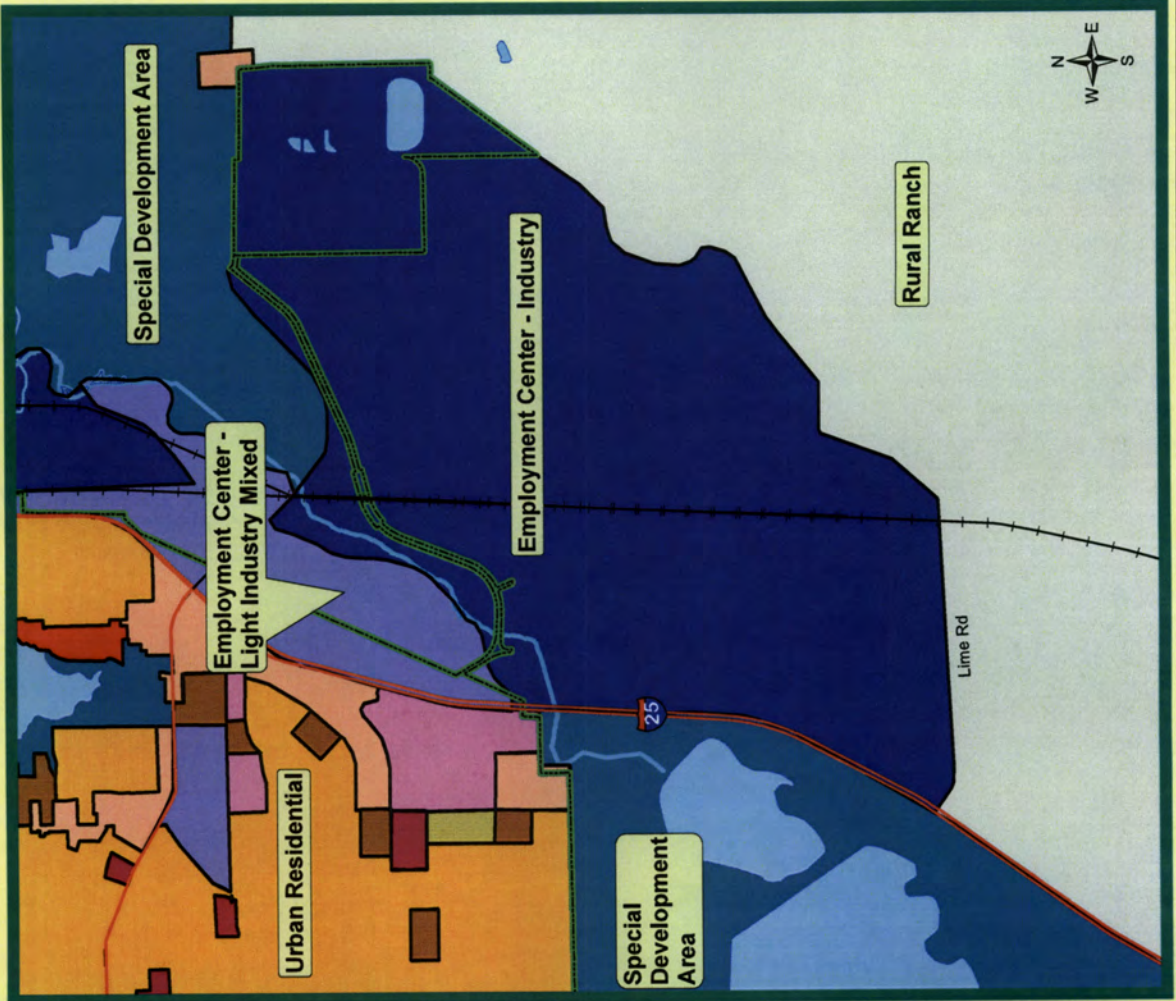
This map is only a representation of the official Comprehensive Plan. For more information, please contact the office of Community Planning and Development.





# Exhibit B

## Proposed Future Land Use



## Existing Future Land Use

