

Board of Health AGENDA

A Board of Health meeting will be held **Wednesday, April 30, 2025, at 12:00 PM**, in the **THIRD FLOOR CONFERENCE ROOM C** at the Health Department, **101 W. 9th St.**
Lunch for Board Members will be served at 11:30 AM.

- A. 12:00 – 12:01 PM – Call to Order and Approval / Changes to Agenda (**Action Required**)
- B. 12:01 – 12:02 PM – Approval of Board of Health Meeting Minutes held Mar. 26, 2025 (**Action Required**)
- C. 12:02 – 12:05 PM – Public Forum
- D. 12:05 – 12:10 PM – Board of Health Discussion and Updates
- E. 12:10 – 12:15 PM – PDPHE Years of Service Recognition
- F. 12:15 – 12:40 PM – Communicable Disease (CD) and Zoonosis Presentation
- G. 12:40 – 12:45 PM – Trash Hauler Licensing Presentation
- H. 12:45 – 1:00 PM – Budget and Finance
 - Monthly Financial Report – March 2025 (**Action Required**)
 - Contracts (**Action Required**)
 - Fee Analysis: Trash Haulers
- I. 1:00 – 1:15 PM – BOH Updates and Reports
 - Legislative Updates
 - Director's Report

ADJOURN

Prevent • Promote • Protect

101 West 9th Street • Pueblo, CO 81003 • (719) 583-4300 • pueblohealth.org

Pueblo Board of Health Meeting Minutes

March 26, 2025

The Pueblo Board of Health meeting was held at the Pueblo Department of Public Health and Environment (PDPHE) building at 101 W 9th St.

Board Members Present:

Donald Moore, Board President (present only for Executive Session, not the Regular Meeting)
Zsuzsa Glasscock, Board Vice President
Abel M. Chavez, Board Member
Eileen Dennis, Board Member
Zolanye McCulley-Bachicha, Board Member

Legal Counsel:

Marci Day, Assistant County Attorney

Administrative Staff Present:

Randy Evetts, Public Health Director
Katie Davis, Deputy Director
Maria Telfer, Community Health Services (CHS) Director
Chad Wolgram, Environmental Health (EH) Director
Shylo Dennison, Community Engagement, Prevention, and Response (CEPR) Director
Georgia Alfonso, Budget and Finance Office (BFO) Director
Denise DeNardo, Human Resource Manager
Eleanora Cassio, Human Resources Generalist (present only for Executive Session, not the Regular Meeting)
Jonathan Hontz, Administrative Assistant

Other Staff Members Present:

Trysten Garcia, Public Information Officer
Caitlin Ceasar, Environmental Health Specialist
Christina Hopewell, Program Manager
Rebecca Aguilar, Microbiologist Lead
Scott Cowan, Program Manager
Alicia Solis, Program Manager
Ronald Sasaoka, EPR Generalist

Other Guests:

Emily Ritchey; Becky Medina, Cheryl Martinez, Cheryl Califano: Boys and Girls Club of Pueblo County
Liz Chase Jones, Intern

Call to Order:

Donald Moore, Board President called the meeting to order at 12:00 PM.

Executive Session

The Board moved into Executive Session for the following reason:

For discussion of a personnel matter under C.R.S. Section 24-6-402(4)(f) and not involving: any specific employees who have requested discussion of the matter in open session; any member of the Board; the appointment of any person to fill an office of the Board; or personnel policies that do not require the discussion of matters personal to particular employees.

Donald Moore adjourned the Executive Session at 12:55 PM.

Zsuzsa Glasscock called the Regular Meeting to order at 1:00 PM.

Approval of Agenda

MOVED by Abel Chavez, seconded by Eileen Dennis, to approve the March 26, 2025 Board of Health meeting agenda as presented.

MOTION CARRIED UNANIMOUSLY

Approval of Minutes

Zsuzsa Glasscock asked the Board for revisions to the minutes. There were none.

MOVED by Abel Chavez, seconded by Zolanye McCulley-Bachicha, to approve the February 26, 2025 BOH meeting minutes as submitted.

MOTION CARRIED UNANIMOUSLY

Public Forum

There were no requests for public comment.

Board of Health Discussion and Updates

There were no items to discuss.

Public Health Champion Announcement and Recognition

The 2025 Public Health Champion is the Boys and Girls Club of Pueblo County. Randy read an appreciation statement and presented them with a plaque honoring their service to public health.

Recognize PDPHE Employees Years of Service

- 5 Years:
 - Caitlin Ceasar – Environmental Health Specialist

Feature Presentation: Emergency Preparedness and Response (EPR) Program

Alicia Solis gave a presentation about the Emergency Preparedness and Response Program at PDPHE. A copy of the presentation is attached to these minutes.

Abel Chavez asked if there is a clear delineation about who responds to events, whether it's PDPHE, the City, or the County, or a combination. Alicia answered that there is a table that

determines who responds, and PDPHE meets monthly with the affected parties to discuss issues pertaining to a response, including delegation of responsibility.

Randy took a moment to compliment the strong relationship between PDPHE and the Emergency Operations Center in Pueblo, which helps these response efforts.

Feature Presentation: Laboratory Program

Scott Cowan and Rebecca Aguilar presented about the Laboratory Program at PDPHE. A copy of the presentation is attached to these minutes.

Abel asked about COVID-19 testing of wastewater, specifically who paid for that. Scott answered that the State was responsible for funding these tests. Abel also asked if the Laboratory's role in licensing kennels and catteries was a new function. Scott answered that this has been a long-standing licensing role.

Budget and Finance

Monthly Financial Reports

BFO director Georgia Alfonso presented financial reports for February 2025. On the YTD income statement, PDPHE ended with a surplus of \$246,599.55. The variance to budget is -\$31,333.63. The balance sheet reflects an Unassigned Fund Balance of \$1,522,604.15, an increase of \$164,889.77 over February 2024. The unassigned fund balance will diminish over the course of the year because it currently reflects fees collected but the services have not been completed.

MOVED by Eileen Dennis, seconded by Zolanye McCulley-Bachicha, to accept the January 2025 financial reports as presented.

MOTION CARRIED UNANIMOUSLY

Contracts

There were no contracts for review this month.

Laboratory Fee Analysis

Georgia Alfonso presented introductory information regarding proposed adjustments to PDPHE's Laboratory fees, explaining that these fees, if approved, would go into effect on July 1, 2025. Georgia explained that this is one area in which PDPHE has some competition with other area laboratories. The current fee increases are made with the end goal of allowing the program to be financially self-sufficient by 2028. The BFO looks at about nine different areas to measure the total costs and revenues associated with these fees, and recommends the following changes:

- Increase in Colieret P/A water analysis fee from \$21 to \$25 (19.05%)
- Increase in Enumerated E. coli water analysis fee from \$23 to \$27 (17.39%)
- Increase in Lab After Hours fee from \$25 to \$40 (60%)
- Increase in Large Containers Disposal Only fee from \$20 to \$26 (30%)

- Increase in Large Containers & Disposal fee from \$25 to \$31 (24%)
- Increase in Medium Disposal Container fee from \$15 to \$21 (40%)
- Increase in Small Disposal Container fee from \$10 to \$16 (60%)

Abel Chavez asked if there will be any communication about these fee increases with the customers that use the lab. Randy and Chad Wolgram answered that communication has already been drafted to explain why PDPHE is making these adjustments. They also explained that the extended time period to get to self-sufficiency is designed to minimize the impacts to customers and retain their business.

Abel asked if there was a possibility to charge areas with more capacity to pay more money for the services. Randy replied that PDPHE could look into it but did not think that a differentiated rate would be allowed.

MOVED by Abel Chavez, seconded by Zolanye McCulley-Bachicha, to approve the proposed fee increases as presented.

MOTION CARRIED UNANIMOUSLY

Public Health Director's Report

- Legislative Updates
 - Katie Davis explained that the Joint Budget Committee is still finishing their recommendations, and should be done by this week.
 - Many other bills are waiting for the budget to be released before moving forward.
 - Abel Chavez asked if the Public Forum section of the Board of Health meeting could be used to help educate and communicate with legislators. Randy answered that the Public Forum is more for public comments, but agreed that building a strong working relationship with our representatives is always important.
- Randy gave several updates:
 - Measles outbreak is continuing to grow, and is likely to show up in Pueblo eventually. PDPHE will continue to inform the Board of any information as it becomes available.
 - National Public Health Week is coming up from April 7-11, with an open house for the community at PDPHE on 4/09 from 2:30-4:30 PM.
 - Work on the PDPHE annual report continues and it is planned to be released during National Public Health Week.
 - Board of Health Retreat is 5/13 from 9 AM – 1 PM.
 - Reminder for the Board to complete the mandatory annual training.

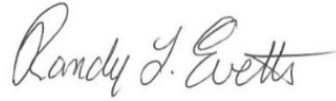
Zsuzsa Glasscock adjourned the Board of Health Meeting at 2:04 PM.

Next BOH Meeting

Wednesday April 30, 2025, at 12:00 PM.



Zsuzsa Glasscock, Board of Health Vice President



Randy Evetts, MPA, Public Health Director

Submitted by Jonathan Hontz
Administrative Assistant

Emergency Preparedness and Response ESF-8

Ron Sasaoka, EPR Generalist

Alicia Solis, Program Manager

March 26, 2025





Mission: Improve medical and public health care preparedness, awareness, response, recovery and epidemiological capabilities within Pueblo County.



Vision: Maintain a prepared, resilient community through planning, training, education and exercises.

Quality

Accountability

Performance

2024-2028 Public Health Emergency Preparedness (PHEP) Cooperative Agreement under the Center for Disease Control

PHEP Funding provides technical assistance and resources to support:

- Center for Disease Control → State → Local
 - State, local, Tribal, and territorial public health departments
 - Healthcare Coalitions (HCC)
 - Healthcare organizations

Goal # 1 → Communicable Disease

- Ensure Pueblo County has the ability to effectively prepare for, monitor, detect, diagnose, investigate, and respond to all types of conditions, events, and disasters that impact the public's health.

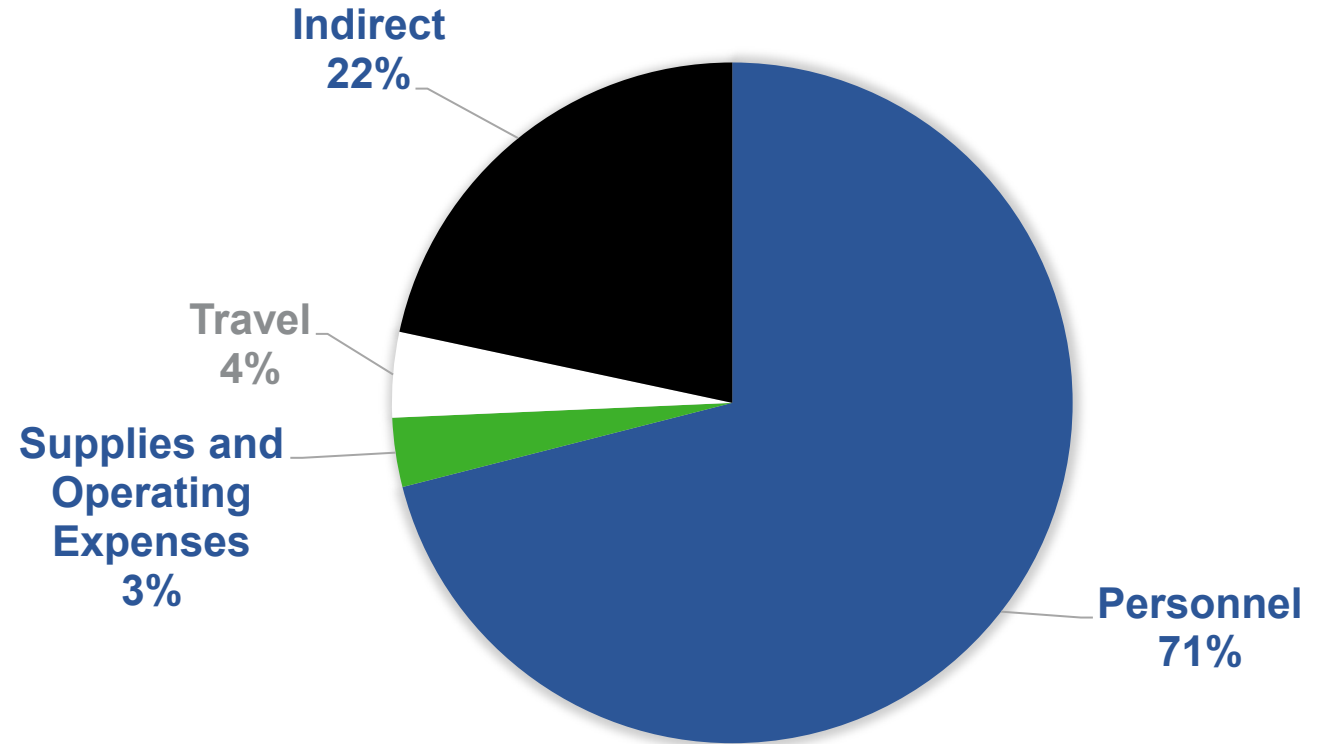
Goal # 2 → Emergency Preparedness and Response

- Increase capacity for preparedness, response and recovery during public health emergencies.

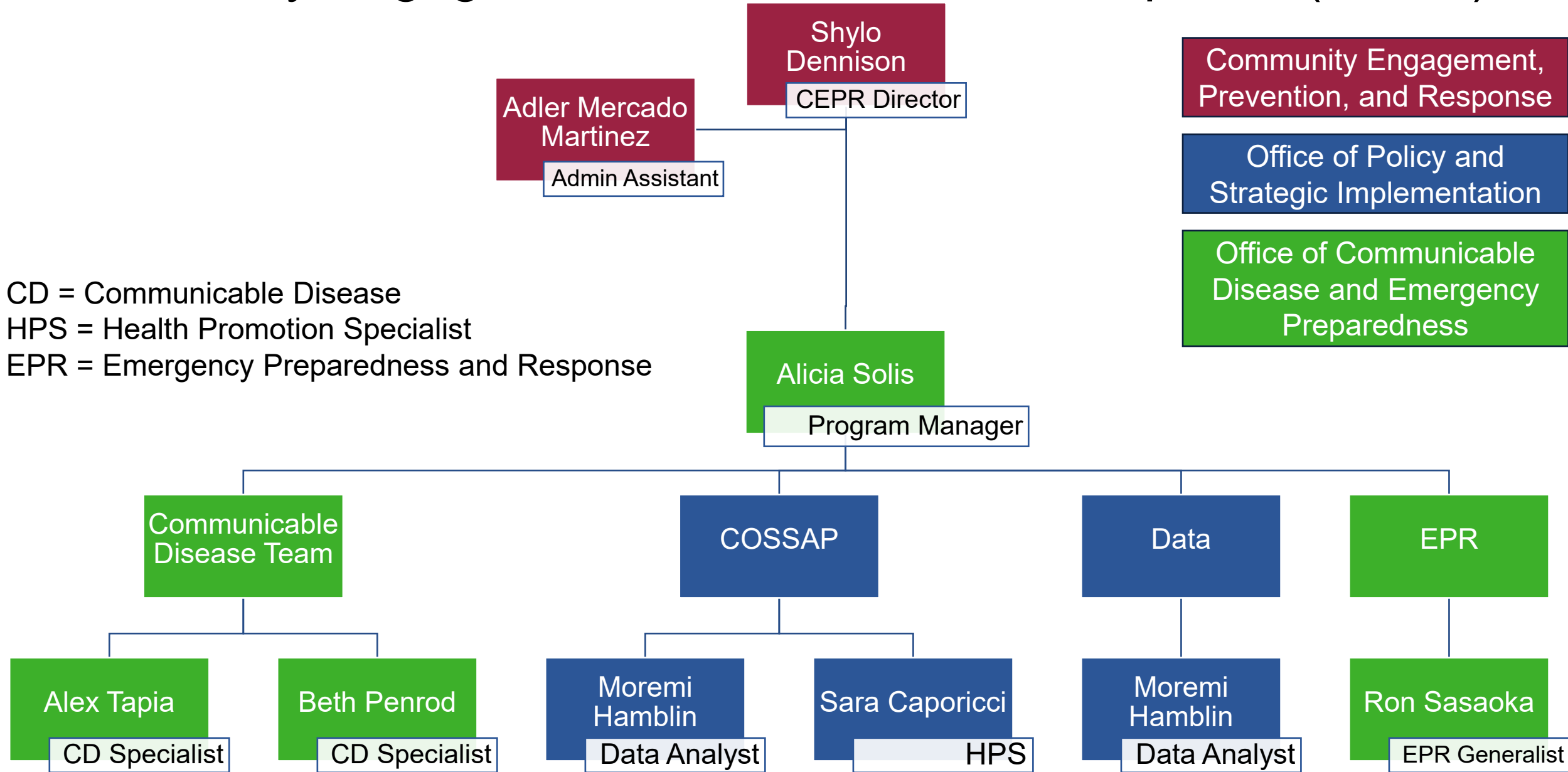
PDPHE PHEP/Budget Period 1 Funding

- July 01, 2024 – June 30, 2025
 - \$173,039.00
- Personnel Includes
 - Program Manager – 15%
 - EPR Generalist – 85%
 - CD Specialist – 50%
 - Equity Coordinator – 5%
 - Admin Assistant – 5%
- Program operates with 1.35 FTE and 0.25 FTE oversight and support.

PHEP/BP1 FUNDING DISTRIBUTION



Community Engagement, Prevention, and Response (CEPR)



Public Health Emergency Preparedness and Response Capabilities

National Standards for State, Local, Tribal and Territorial Public Health

1. Community Preparedness
2. Community Recovery
3. Emergency Operations Coordination
4. Emergency Public Information and Warning
5. Fatality Management
6. Information Sharing
7. Mass Care
8. Medical Countermeasure Dispensing and Administration
9. Medical Material Management and Distribution
10. Medical Surge
11. Nonpharmaceutical Interventions
12. Public Health Laboratory Testing
13. Public Health Surveillance and Epidemiological Investigation
14. Responder Safety and Health
15. Volunteer Management

FEMA National Response Framework

Emergency Support Function (ESF) - 8

Public Health and Medical Services

In Pueblo County the purpose of ESF-8 is to provide response and recovery actions related to lifesaving, transport, evacuation, treatment of the affected population, controlling the spread of contamination, disease control activities, preventing contamination of water and food supplies, and disposition of the dead.

ESF-8 (Public Health and Medical Services)

Provides supplemental assistance to State, Tribal, and Local governments in the following core functional areas:

- Assessment of public health/medical needs
- Health surveillance
- Medical care personnel
- Health/medical/veterinary equipment and supplies
- Patient evacuation
- Patient care
- Safety and security of drugs, biologics, and medical devices
- Blood and blood products
- Food safety and security
- Agriculture safety and security
- All-hazard public health and medical consultation, technical assistance, and support
- Behavioral health care
- Public health and medical information
- Vector control
- Potable water/wastewater and solid waste disposal
- Mass fatality management, victim identification, and decontaminating remains
- Veterinary medical support

When does Public Health respond?

Emergency Services Bureau – Emergency Operations Center

Who Responds?

Emergency Preparedness and Response Generalist	<ul style="list-style-type: none"> •ESF-8 Lead •Subject Matter Expert
Environmental Health Specialist Lead	<ul style="list-style-type: none"> •ESF-8 Representative •Subject Matter Expert
Environmental Health Specialist(s)	<ul style="list-style-type: none"> •ESF-8 Scribe •Subject Matter Expert, conduct field investigations, inspections or collect specimens
Public Information Officer	<ul style="list-style-type: none"> •Provide public updates and messaging
Communicable Disease Specialist	<ul style="list-style-type: none"> •Conduct case and contact investigations, monitor and surveillance of community health, collect specimens, provide guidance and requirements for isolation and quarantine
Clinic RN(s)	<ul style="list-style-type: none"> •Conduct evaluation, provide testing or vaccination
Health Promotion Specialist(s)	<ul style="list-style-type: none"> •Help field public calls and create educational materials
Vital Statistics	<ul style="list-style-type: none"> •Provide information and creation of death certificates •Tracking of disease or event related deaths
Public Health Director and/or Deputy Director	<ul style="list-style-type: none"> •Act as Incident Command or Unified Command
PDPHE Medical Officer	<ul style="list-style-type: none"> •Guide isolation, quarantine, evaluation, treatment and vaccination requirements for the community
PDPHE Director(s)	<ul style="list-style-type: none"> •Act as internal Incident Command, Liaison or Section Chief
PDPHE Program Manager(s)	<ul style="list-style-type: none"> •Act as Internal Section Chiefs, Safety Officer, Branch or Unit Leads •ESF-8 support and Subject matter Expert

Definitely Responds

Sometimes Responds

On Standby to Respond

What does Public Health respond to during an emergency or disaster?

A “public health emergency” may be defined as an event or incident, either natural or manmade, that creates a health risk to the public.

Natural Disasters and Agricultural Impacts



2016 Fire Beulah, CO





2017 Flooding Beulah, CO





2024 Vision Hills Fire
Pueblo, CO

2024 Evraz Fire
Pueblo, CO



Public Health Response

Who Responds?

How do they respond?

Emergency Preparedness and Response Generalist	<ul style="list-style-type: none">•ESF-8 Lead•Subject Matter Expert
Environmental Health Specialist Lead	<ul style="list-style-type: none">•ESF-8 Representative•Subject Matter Expert
Environmental Health Specialist(s)	<ul style="list-style-type: none">•ESF-8 Scribe•Subject Matter Expert, conduct field investigations, inspections or collect specimens
Public Information Officer	<ul style="list-style-type: none">•Provide public updates and messaging
Communicable Disease Specialist	<ul style="list-style-type: none">•Conduct case and contact investigations, monitor and surveillance of community health, collect specimens, provide guidance and requirements for isolation and quarantine
Clinic RN(s)	<ul style="list-style-type: none">•Conduct evaluation, provide testing or vaccination
Health Promotion Specialist(s)	<ul style="list-style-type: none">•Help field public calls and create educational materials
Vital Statistics	<ul style="list-style-type: none">•Provide information and creation of death certificates•Tracking of disease or event related deaths
Public Health Director and/or Deputy Director	<ul style="list-style-type: none">•Act as Incident Command or Unified Command
PDPHE Medical Officer	<ul style="list-style-type: none">•Guide isolation, quarantine, evaluation, treatment and vaccination requirements for the community
PDPHE Director(s)	<ul style="list-style-type: none">•Act as internal Incident Command, Liaison or Section Chief
PDPHE Program Manager(s)	<ul style="list-style-type: none">•Act as Internal Section Chiefs, Safety Officer, Branch or Unit Leads•ESF-8 support and Subject matter Expert

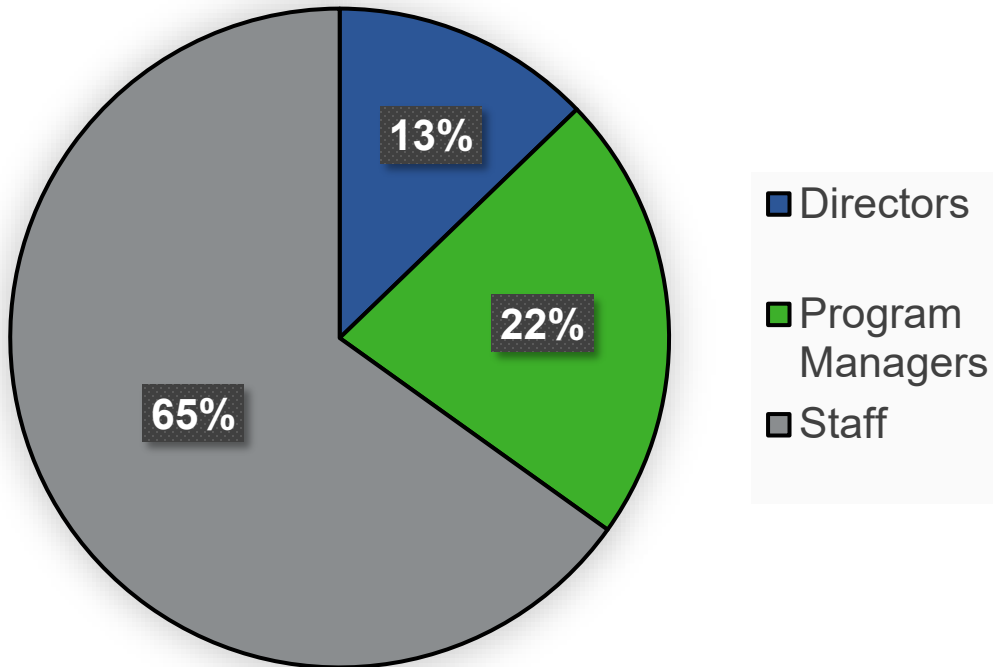
Definitely Responds

Sometimes Responds

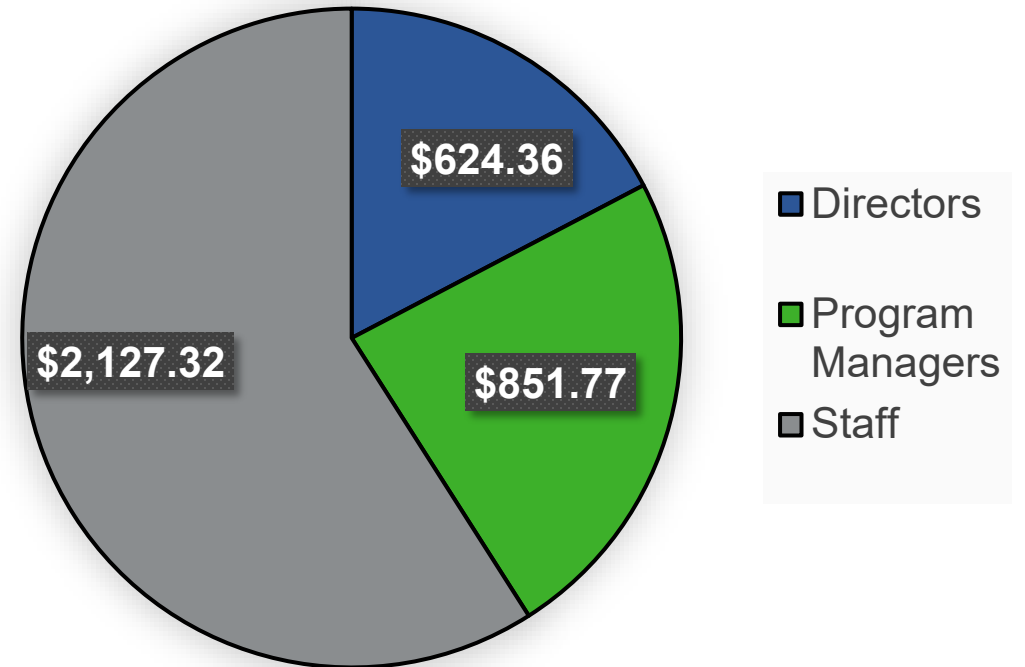
On Standby to Respond

PDPHE Response to ESF-8 for Vision Hills and Evraz fires in April 2024

Total Number of Hours = 86



Total Cost = \$3,603.45



Equipment and Infrastructure Failures

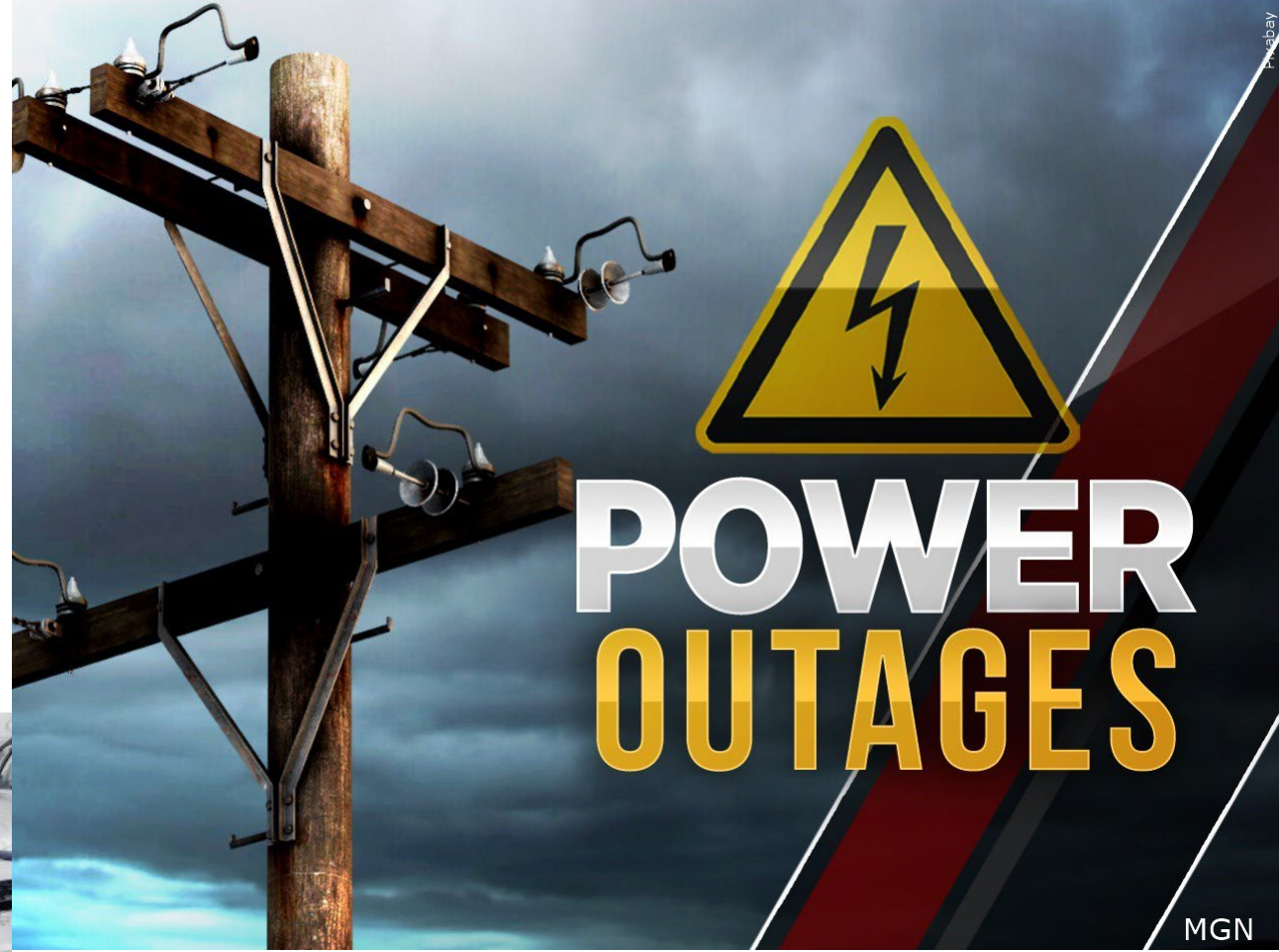


2019 I-25 Transportation Crash Pueblo County

2023 I-25 Transportation Crash Pueblo County



Blizzard of '97



Pueblo County

MGN

Chemical/ Biological/ Radiological/ Nuclear (CBRN) Terrorism

THE ANTHRAX ATTACKS

2001 Anthrax Spores in Letters

2022 Chlorine Gas Cloud Virginia





Practice donning and doffing for a bad day at work. Training.

Pueblo Chemical Agent – Destruction
Pilot Plant (PCAPP)
CSEPP Funding



Mass Casualty Incidents



2021 Mass Casualty Training Pueblo County

2019 MCI on I-25 Denver, CO



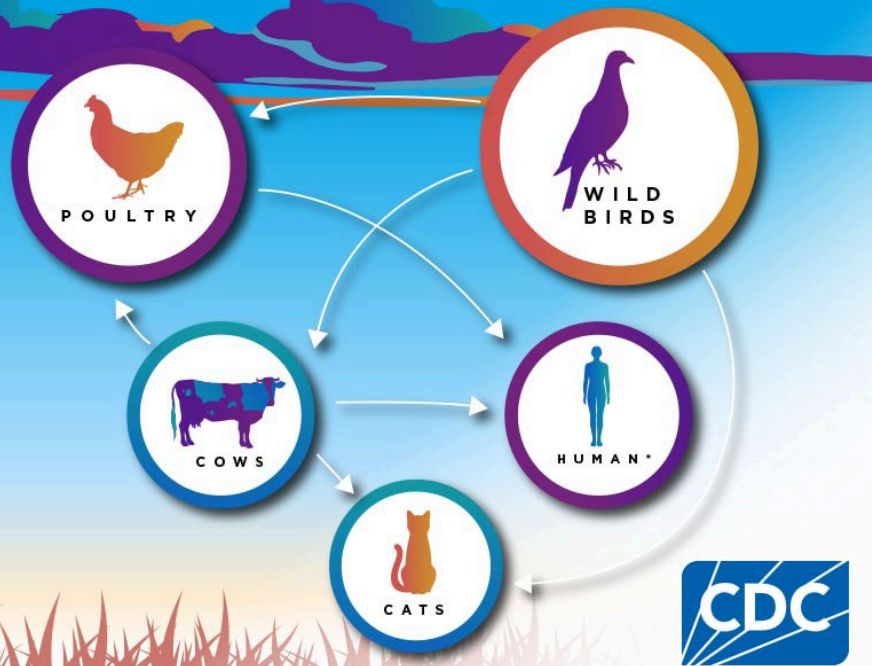
June 03, 1921 Flood Pueblo, CO



2021 Mass Shooting Boulder, CO

Infectious Disease Outbreak, Epidemic, or Pandemic

H5N1 Bird Flu How is it Spreading?



**No human-to-human spread of H5N1 has been detected during the current outbreak in dairy cows.*

2022-present Highly Pathogenic Avian Influenza (HPAI) Outbreak



2011 Listeria Outbreak



2015 Plague Pueblo County

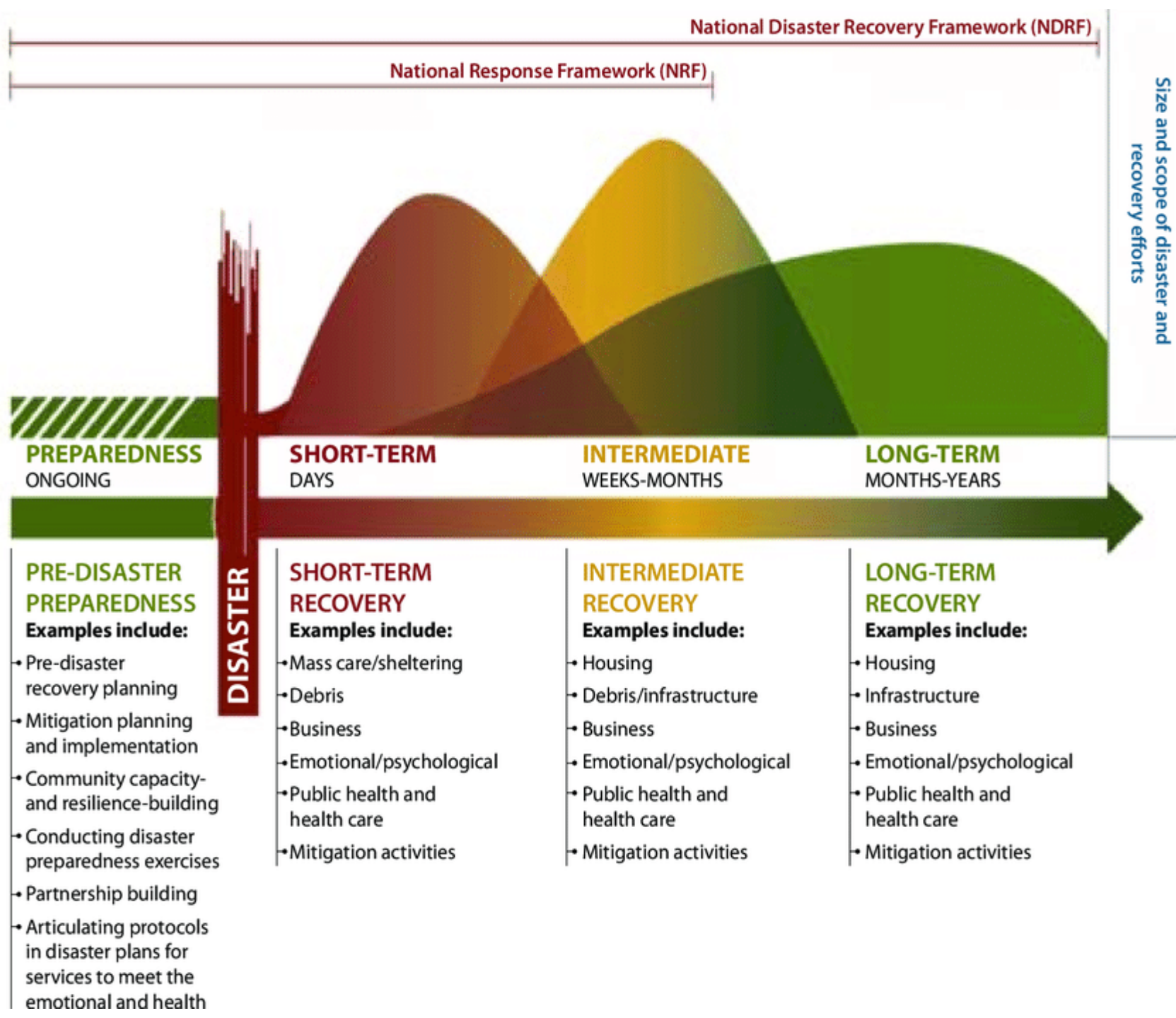


2020-2023 COVID-19 Pandemic Pueblo, CO



Public Health's Role in Recovery

Helping community services return to normal, repairing affected infrastructure, and improving the resiliency of a community following a disaster.



Preparing for Emerging Issues

What are we preparing for in 2025?

- Extreme Weather/Heat Conditions
- Cyber Attacks
- Active Shooters
- Electrical Power Outages
- Chemical Release/Spill
- Transportation accident
- Fire
- Flood
- Communicable Disease Outbreaks
- Measles
- H5N1
- Mpox
- Syphilis
- Tuberculosis
- Bioterrorism

Who do we rely on and work with to help protect the Health and Environment of Pueblo County?

- Local Emergency Management Services
- Local Law Enforcement Agencies
- Local Government
- Local Fire Department
- (CDOT) Colorado Department of Transportation
- (CDPHE) Colorado Department of Public Health and Environment
- Local School Districts & Higher Education
- (ARES) Amateur Radio Emergency Services
- Veterans Administration (VA) Medical Center



- CSU-Extension
- Local Hospitals
- Pueblo Department of Social Services
- American Red Cross
- American Medical Response
- Public Works
- (CPW) Colorado Parks and Wildlife
- Coroner
- Behavioral/Mental Health
- Local and State Veterinarians
- Humane Society Pikes Peak Region - Pueblo

PDPHE After Hours On-Call Number
719-248-1484

Thank you!

Ronald Sasaoka

719-583-9904

ronald.sasaoka@pueblocounty.us

Alicia Solis

719-583-4355

solisa@pueblocounty.us

Laboratory

Scott Cowan, Program Manager

Rebecca Aguilar, Lead Microbiologist

Taylor Maez, Environmental Health Specialist

Caitlin Ceasar, Environmental Health Specialist

March 24, 2025

Laboratory Overview

The laboratory tests public drinking water, private well water, public pools, wastewater, and lakes for bacteria to ensure the safety of drinking water and recreational waters.

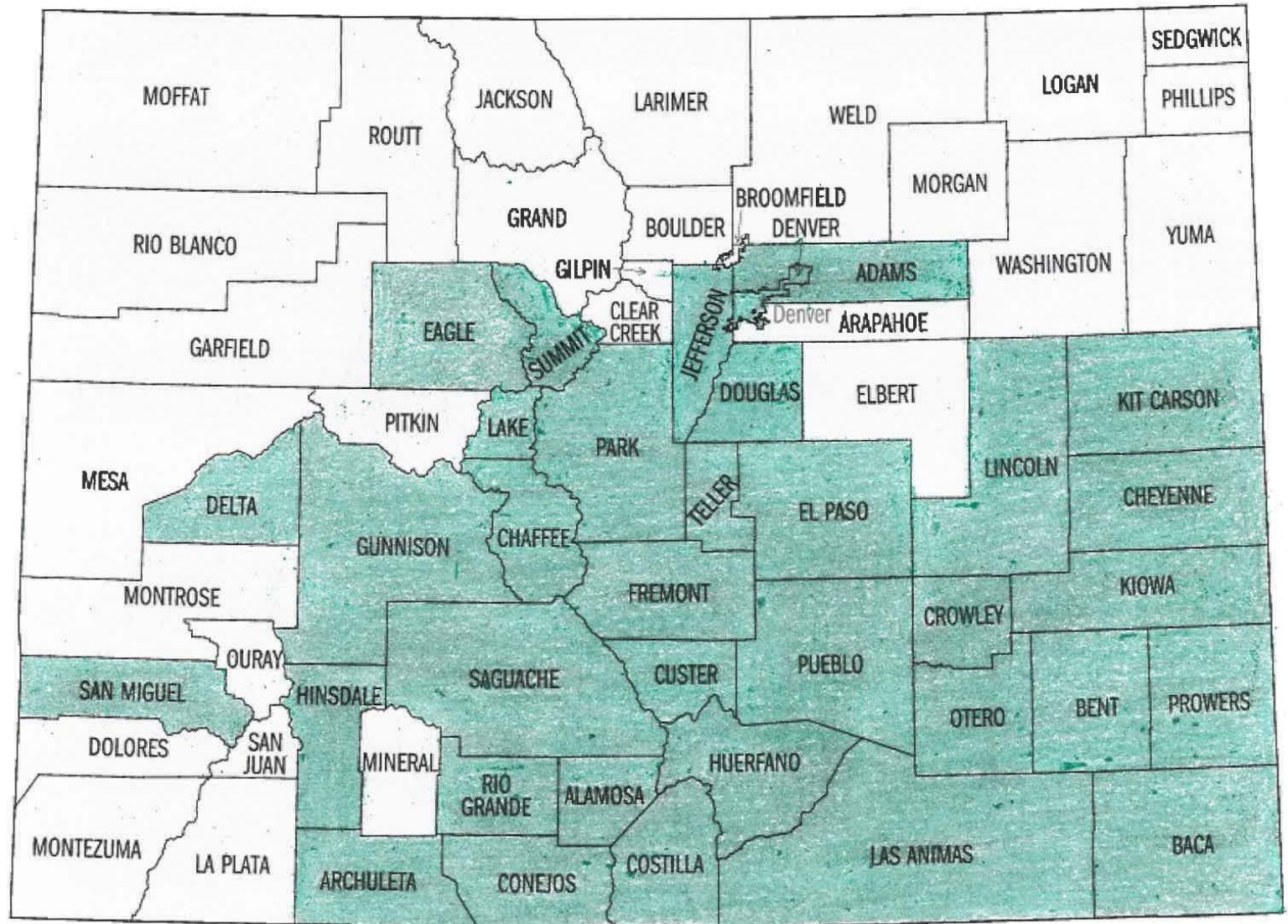


Drinking Water

- All Pueblo County residents use a public water supply, private well, spring or cistern as their potable water supply. The Colorado Department of Public Health & Environment has jurisdiction over all public water systems within the State, while the Pueblo Department of Public Health and Environment oversees private wells, springs, cisterns, and local water vendors.
- Private well supplies such as wells, springs, and cisterns are not legally required to meet minimum standards. The private potable water systems in Pueblo County are not required to meet any specific regulatory requirements. PDPHE performs general potability testing as a service to the public.

Drinking Water

- The laboratory provides water testing for 35 counties across Colorado.
- The laboratory performs water analysis for 414 public water systems.
- In 2024, the laboratory averaged 532 water samples a month.
- In 2024, the laboratory performed the testing of 6,386 water samples.



What does the Laboratory test for?

The laboratory tests for Total Coliform and E.coli bacteria:



Total Coliform	E.coli
<ul style="list-style-type: none">• Present in the environment• Normally caused by non warm-blooded sources (soil, tree roots, or bugs)	<ul style="list-style-type: none">• A fecal coliform bacteria• Found in the digestive tract of warm-blooded animals• Caused by humans or animals and is an indicator for fecal contamination.



What tests do we offer?

Presence / Absence

- \$ 21.00 Fee
- Results will only state present or absent for bacteria if detected
- Test performed using Idexx bottle
- All PDPHE staff are allowed one free water test per year

Enumerated

- \$ 23.00 fee
 - Results are enumerated, meaning a quantity of bacteria per 100ml is given
 - Test performed using a Quanti-tray
 - Typically for compliance to ensure wastewater discharge is within allowable limits of bacteria
 - Can be used to check treatment efficiency after UV or chlorination
 - Also used for recreational waters to ensure safety (swim beach)
-
- Both tests require a minimum incubation of 24 hours, but do not exceed 28 hours.
 - Results are read 24 hours from the time of incubation and sent via email.
 - Public water systems that are positive for total coliform or E.coli are reported to CDPHE immediately.

Sharps Disposal

- The PDPHE laboratory is the only location in Pueblo that accepts and safely disposes of household sharps containers.
- Sharps must be in an approved puncture-resistant sharps container.
- Disposal fees range from \$10 - \$20 based on size of container.
- The lab sells 2 gallon sharp containers for \$25 to replace those dropped off for disposal.
- Sharps disposal is also utilized by WIC, PDPHE Clinic, and the Body Art program.



Zoonotic Disease

- A zoonotic disease is an infectious disease that can be transmitted from animals to humans or vice versa.
- The zoonotic program at PDPHE plays an important role in monitoring and surveillance of many other diseases as well.
- Currently, the disease the health department sees the most in Pueblo County is the rabies virus. The health department's role in this program is to protect the community by tracking animals that test positive for rabies and managing domestic animals that may have encountered a rabid animal.
- Tracking any outbreaks, as well as, educating the public on signs, symptoms, and causes of such vector-borne diseases helps the health department accomplish the goal of keeping the Pueblo community as healthy as possible.
- Pueblo City Ordinance also specifies the Pueblo Department of Public Health and Environment as the agency responsible for licensing kennels and catteries within the City of Pueblo.



Thank you!

Scott Cowan

719-583-4370

scott.cowan@pueblocounty.us

Rebecca Aguilar

719-583-4318

aguilarr@pueblocounty.us